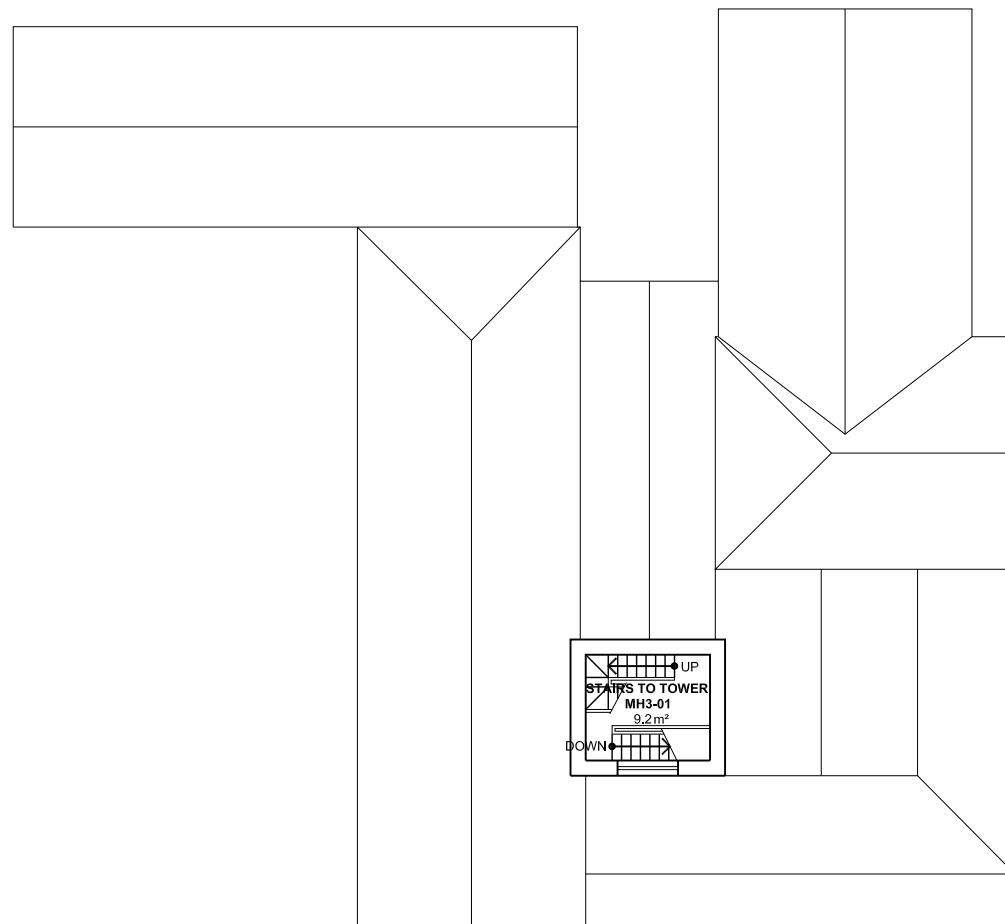


2 4 6 8 10m

20

40

60



**NOTES:**  
 Building Records drawings remain the property of the University of South Australia and must be returned upon request.  
 These drawings may be inaccurate, and are subject to change without notice. Any errors and/or omissions should be reported to the Facilities Management Unit.



**UNIVERSITY OF  
SOUTH AUSTRALIA**

**FACILITIES  
MANAGEMENT  
UNIT**

Level 2,  
101 Currie Street,  
Adelaide, SA 5000  
Phone 8302 2762  
Fax 8302 2708

**BUILDING RECORDS  
MAGILL CAMPUS**

Building  
**MURRAY HOUSE  
BUILDING MH  
LEVEL 03**

Scale: Refer to scale bar  
 Drawn: J Hvalica  
 Last Update: 30/03/2015

Drawing No.: **A307PL03 - W**  
 Revision: **C**

