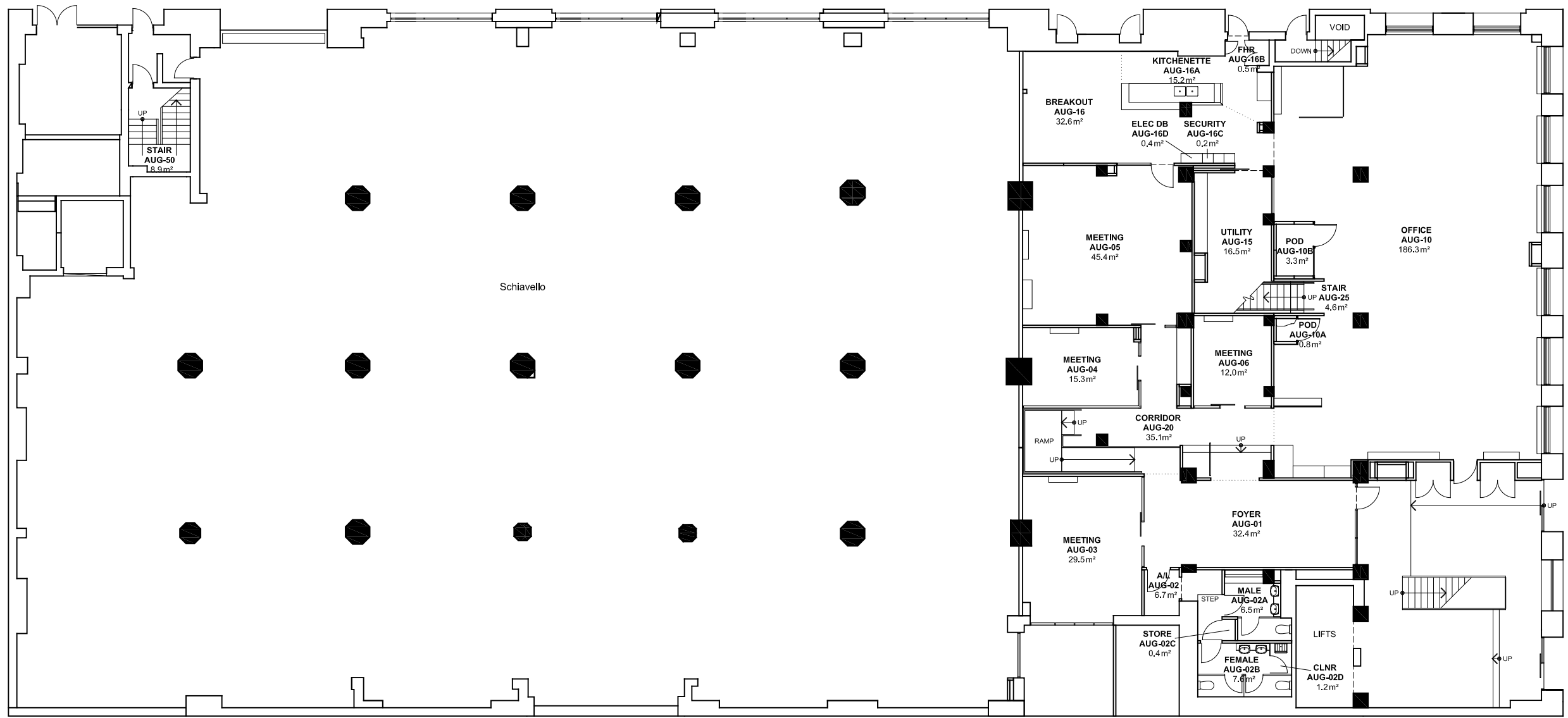


2 4 6 8 10m 20 40 60

NOTES:
 Building Records drawings remain the property of the University of South Australia and must be returned upon request.
 These drawings may be inaccurate, and are subject to change without notice. Any errors and/or omissions should be reported to the Facilities Management Unit.



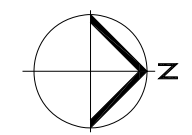
UNIVERSITY OF SOUTH AUSTRALIA

FACILITIES MANAGEMENT UNIT
 101 Currie Street, Adelaide, SA 5000

**BUILDING RECORDS
 CITY WEST CAMPUS**

Building
**101 CURRIE STREET
 BUILDING AU
 LEVEL G**

Scale: Refer to scale bar
 Drawn: J Hvalica
 Last Update: 07/08/2023



Drawing No.: **A716PL0G - W**
 Revision: **D**