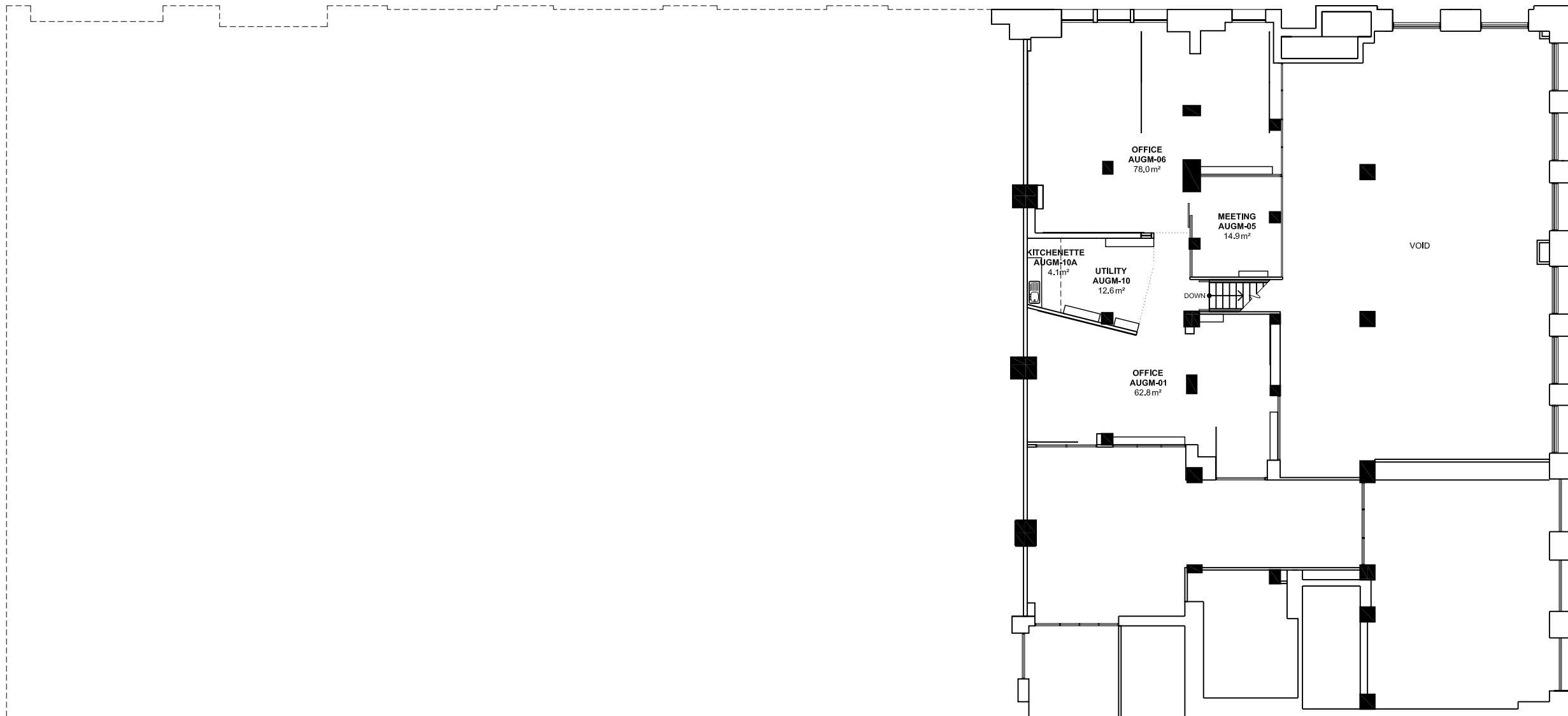


2 4 6 8 10m 20 40 60

NOTES:
Building Records drawings remain the property of the University of South Australia and must be returned upon request.
These drawings may be inaccurate, and are subject to change without notice. Any errors and/or omissions should be reported to the Facilities Management Unit.



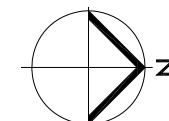
**UNIVERSITY OF
SOUTH AUSTRALIA**

**FACILITIES
MANAGEMENT
UNIT** Level 2,
101 Currie Street,
Adelaide, SA 5000
Phone 8302 2762
Fax 8302 2708

**BUILDING RECORDS
CITY WEST CAMPUS**

Building
**101 CURRIE STREET
BUILDING AU
MEZZANINE (of LEVEL 0G)**

Scale: Refer to scale bar
Last Update: 15/03/2016
Drawn: J Hvalica



Drawing No.: **A716PLGM - W** Revision: **A**