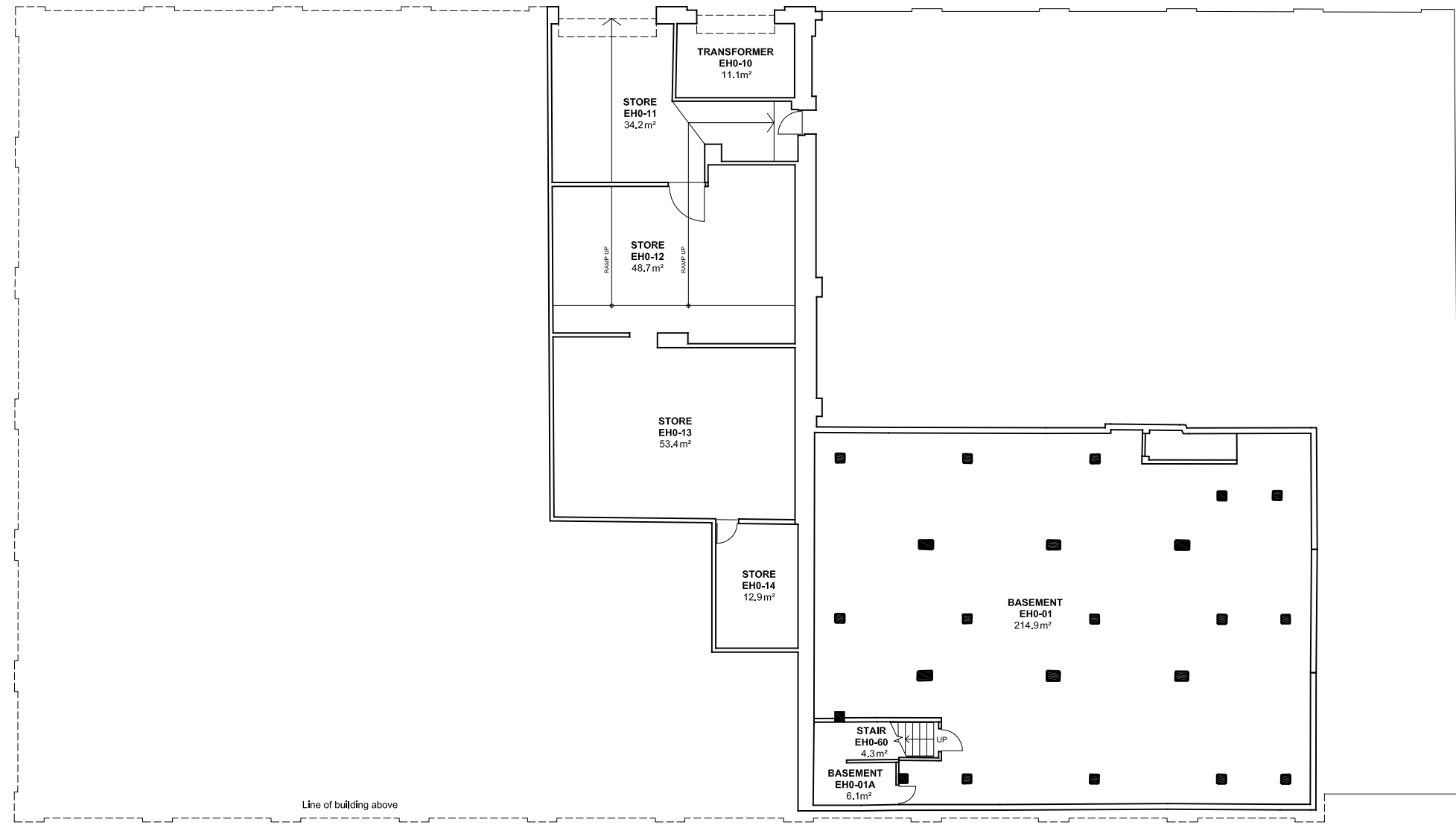


2 4 6 8 10m 20 40 60

**NOTES:**  
Building Records drawings remain the property of the University of South Australia and must be returned upon request.  
These drawings may be inaccurate, and are subject to change without notice. Any errors and/or omissions should be reported to the Facilities Management Unit.



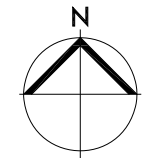
UNIVERSITY OF SOUTH AUSTRALIA

FACILITIES MANAGEMENT UNIT  
101 Currie Street, Adelaide. SA 5000

BUILDING RECORDS  
CITY WEST CAMPUS

Building  
ENTERPRISE HUB  
BUILDING EH  
LEVEL 0 Basement

Scale: Refer to scale bar  
Last Update: 12/10/2022  
Drawn: J Hvalica



Drawing No.: A727PL00 - W  
Revision: B