

## Confined Space Register 2012

Original assessment by AECOM Australia Pty Ltd



### City East Campus Site

#### Version 1

Note: document links in blue underline text  
Symbols on plans are also links

Version No.	Date	Amendment details	Approved by
1	23/10/2012	Original version as assessed by AECOM Australia Pty Ltd	-

**This Confined Space Register does not remove the requirement for contractors to complete their own work-based risk assessment.**

Please [refer to Appendix](#) for other spaces assessed.

# AECOM

## Declassifying Statement

AECOM's assessment of a confined space was based on the information provided by the University of South Australia (UniSA) site representative and visual observation on the day. Risk assessment and hazard identification of a confined space was classified in accordance with:

- Work Health and Safety Regulations 2012 (SA);
- AS2865-2009.

Should UniSA wish to declassify a space which AECOM has deemed to be a 'Confined Space', *section 2.4.6 of AS 2865-2009* must be adhered to as stated below.

"For a space which has previously been classified as a confined space to be reclassified as a non-confined space, it needs to have undergone sufficient changes in structure or usages to eliminate (without the need for risk control measures) all possible sources of inherent hazard that define a confined space. Any changes to a confined space would have to be such that a subsequent risk assessment would determine that it no longer meets the criteria for a confined space".

Sufficient evidence to show that the statement above has been met must be provided to the University of South Australia Facilities Management Unit who has the appropriate privilege to alter the Confined Space Register.

Space ID	Space description	Location description	GPS reference	Confined Space according to Work Health and Safety Regulations 2012 (SA)?	Confined Space according to AS 2865-2009?	UniSA deemed Confined Space?	Comments	Link to details	Link to Plan
CE-site-01	Acid Neutralising Pit	Between Building BJ and Building BC	S 34°55.188' E138°36.394'	Yes	Yes	Confined Space		<a href="#">CE-site-01</a>	<a href="#">Site</a>
CE-site-02	Grease Trap	Between Building A and Building B	S 34°55.229' E138°36.410'	Yes	Yes	Confined Space		<a href="#">CE-site-02</a>	<a href="#">Site</a>
CE-site-03	Stormwater	W Side Building A	S 34°55.222' E138°36.414'	Yes	Yes	Confined Space		<a href="#">CE-site-03</a>	<a href="#">Site</a>
CE-site-04	Stormwater	W Side Building A	S 34°55.223' E138°36.412'	Yes	Yes	Confined Space		<a href="#">CE-site-04</a>	<a href="#">Site</a>
CE-site-05	Stormwater	W Side Building A	S 34°55.233' E138°36.400'	Yes	Yes	Confined Space		<a href="#">CE-site-05</a>	<a href="#">Site</a>
CE-site-07	Grease Trap	SW Corner Building P	S 34°55.201' E138°36.393'	Yes	Yes	Confined Space		<a href="#">CE-site-07</a>	<a href="#">Site</a>
CE-site-08	Sewer	N Side Building BH	S 34°55.159' E138°36.417'	Yes	Yes	Confined Space		<a href="#">CE-site-08</a>	<a href="#">Site</a>
CE-site-09	Sump and Valve Pits	NE Corner Building R	S 34°55.009' E138°36.399'	Yes	Yes	Confined Space		<a href="#">CE-site-09</a>	<a href="#">Site</a>
CE-site-10	Pits	N Side Building R	S 34°55.004' E138°36.385'	Yes	Yes	Confined Space		<a href="#">CE-site-10</a>	<a href="#">Site</a>
CE-site-11	Sewer	NE Corner Building R	S 34°55.005' E138°36.395'	Yes	Yes	Confined Space		<a href="#">CE-site-11</a>	<a href="#">Site</a>
CE-site-12	Stormwater	Between Building P and Building H	S 34°55.188' E138°36.404'	Yes	Yes	Confined Space		<a href="#">CE-site-12</a>	<a href="#">Site</a>
CE-site-13	Stormwater	Between Building P and Building H	S 34°55.190' E138°36.402'	Yes	Yes	Confined Space		<a href="#">CE-site-13</a>	<a href="#">Site</a>
CE-site-14	Stormwater	Between Building P and Building H	S 34°55.188' E138°36.402'	Yes	Yes	Confined Space		<a href="#">CE-site-14</a>	<a href="#">Site</a>
CE-site-15	Stormwater	Between Building P and Building H	S 34°55.183' E138°36.403'	Yes	Yes	Confined Space		<a href="#">CE-site-15</a>	<a href="#">Site</a>
CE-site-16	Stormwater	Between Building P and Building H	S 34°55.191' E138°36.407'	Yes	Yes	Confined Space		<a href="#">CE-site-16</a>	<a href="#">Site</a>

# University of South Australia Confined Space Register 2012

Assessed by: AECOM Australia Pty Ltd

Date Assessed: 23/10/2012

Assessors: Daniel Alexander

Campus:	City East
Building:	Site
Space ID:	<b>CE-site-01</b>
Description:	<b>Acid Neutralising Pit</b>
Location:	Between Building BJ and Building BC, GPS: S 34°55.188' E 138°36.394'

UniSA deemed: **Confined Space**

UniSA deems a space Confined Space if either assessment criteria (shown below) results in Yes.

Number of Entrances:	1
Entry type:	Gatic over pit
Access type:	Ladder

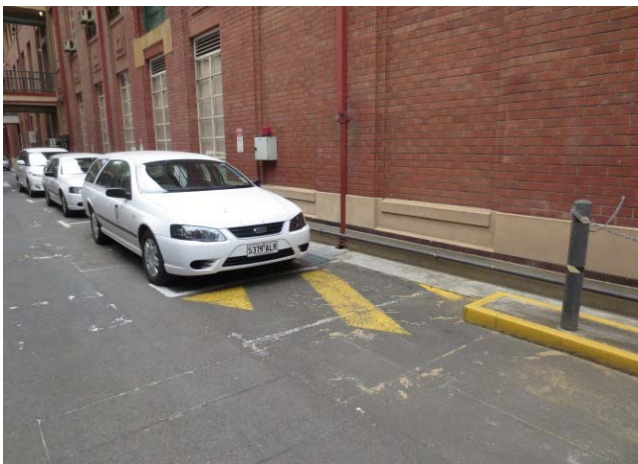
Comments:	
Additional Hazards:	Low oxygen, Asphyxiant, Poisoning, Head impact, Engulfment, Manual handling, Constrained movement, Atmospheric contaminants

[View on plan](#)

[Return to Register](#)

Category	Criteria: Work Health and Safety Regulations 2012 (SA)	Result
A	Is the space enclosed or partially enclosed?	Yes
B	Is not designed or intended primarily to be occupied by a person?	Yes
C	Is, or is designed or intended to be, at normal atmospheric pressure while any person is in the space?	Yes
D	Is or is likely to be a risk to health and safety from:	
i)	an atmosphere that does not have a safe oxygen level?	Yes
ii)	contaminants, including airborne gases, vapours and dusts, that may cause injury from fire or explosion?	Yes
iii)	harmful concentrations of any airborne contaminants?	Yes
iv)	engulfment?	Yes
<b>Confined Space</b>	If the answer to A <b>and</b> B <b>and</b> C <b>and</b> at least one of D i), ii), iii) or iv) is Yes, then the space is a Confined Space.	<b>Yes</b>

Category	Criteria: AS2865-2009	Result
A	Is the space enclosed or partially enclosed?	Yes
B	Is not intended or designed primarily for human occupancy?	Yes
C	Has an oxygen concentration outside the safe oxygen range?	Yes
D	Has a concentration of airborne contaminant that may cause impairment, loss of consciousness or asphyxiation?	Yes
E	Has a concentration of flammable airborne contaminant that may cause injury from fire or explosion?	Yes
F	Has a risk of engulfment in a stored free flowing solid or a rising level of liquid that may cause suffocation or drowning?	Yes
<b>Confined Space</b>	If the answer to A <b>and</b> B <b>and</b> at least one of C, D, E or F is Yes, then the space is a Confined Space.	<b>Yes</b>



Date	Amendment details	Approved by



# University of South Australia Confined Space Register 2012

Assessed by: AECOM Australia Pty Ltd

Date Assessed: 23/10/2012

Assessors: Daniel Alexander

Campus:	City East
Building:	Site
Space ID:	CE-site-02
Description:	Grease Trap
Location:	Between Building A and Building B, GPS: S 34°55.229' E 138°36.410'

UniSA deemed: **Confined Space**

UniSA deems a space Confined Space if either assessment criteria (shown below) results in Yes.

Number of Entrances:	3
Entry type:	Gatic over pit
Access type:	Ladder

Comments:	
Additional Hazards:	Low oxygen, Asphyxiant, Head impact, Engulfment, Manual handling, Constrained movement, Atmospheric contaminants

[View on plan](#)

[Return to Register](#)

Category	Criteria: Work Health and Safety Regulations 2012 (SA)	Result
A	Is the space enclosed or partially enclosed?	Yes
B	Is not designed or intended primarily to be occupied by a person?	Yes
C	Is, or is designed or intended to be, at normal atmospheric pressure while any person is in the space?	Yes
D	Is or is likely to be a risk to health and safety from:	
i)	an atmosphere that does not have a safe oxygen level?	Yes
ii)	contaminants, including airborne gases, vapours and dusts, that may cause injury from fire or explosion?	Yes
iii)	harmful concentrations of any airborne contaminants?	Yes
iv)	engulfment?	Yes
<b>Confined Space</b>	If the answer to A <b>and</b> B <b>and</b> C <b>and</b> at least one of D i), ii), iii) or iv) is Yes, then the space is a Confined Space.	<b>Yes</b>

Category	Criteria: AS2865-2009	Result
A	Is the space enclosed or partially enclosed?	Yes
B	Is not intended or designed primarily for human occupancy?	Yes
C	Has an oxygen concentration outside the safe oxygen range?	Yes
D	Has a concentration of airborne contaminant that may cause impairment, loss of consciousness or asphyxiation?	Yes
E	Has a concentration of flammable airborne contaminant that may cause injury from fire or explosion?	Yes
F	Has a risk of engulfment in a stored free flowing solid or a rising level of liquid that may cause suffocation or drowning?	Yes
<b>Confined Space</b>	If the answer to A <b>and</b> B <b>and</b> at least one of C, D, E or F is Yes, then the space is a Confined Space.	<b>Yes</b>



Date	Amendment details	Approved by

# University of South Australia Confined Space Register 2012

Assessed by: AECOM Australia Pty Ltd

Date Assessed: 23/10/2012

Assessors: Daniel Alexander

Campus:	City East
Building:	Site
Space ID:	CE-site-03
Description:	Stormwater
Location:	W Side Building A, GPS: S 34°55.222' E 138°36.414'

UniSA deemed: **Confined Space**

UniSA deems a space Confined Space if either assessment criteria (shown below) results in Yes.

Number of Entrances:	1
Entry type:	Gatic over pit
Access type:	Ladder

Comments:	
Additional Hazards:	Low oxygen, Asphyxiant, Head impact, Engulfment, Manual handling, Constrained movement, Atmospheric contaminants

[View on plan](#)

[Return to Register](#)

Category	Criteria: Work Health and Safety Regulations 2012 (SA)	Result
A	Is the space enclosed or partially enclosed?	Yes
B	Is not designed or intended primarily to be occupied by a person?	Yes
C	Is, or is designed or intended to be, at normal atmospheric pressure while any person is in the space?	Yes
D	Is or is likely to be a risk to health and safety from:	
i)	an atmosphere that does not have a safe oxygen level?	Yes
ii)	contaminants, including airborne gases, vapours and dusts, that may cause injury from fire or explosion?	Yes
iii)	harmful concentrations of any airborne contaminants?	Yes
iv)	engulfment?	Yes
<b>Confined Space</b>	If the answer to A <b>and</b> B <b>and</b> C <b>and</b> at least one of D i), ii), iii) or iv) is Yes, then the space is a Confined Space.	<b>Yes</b>

Category	Criteria: AS2865-2009	Result
A	Is the space enclosed or partially enclosed?	Yes
B	Is not intended or designed primarily for human occupancy?	Yes
C	Has an oxygen concentration outside the safe oxygen range?	Yes
D	Has a concentration of airborne contaminant that may cause impairment, loss of consciousness or asphyxiation?	Yes
E	Has a concentration of flammable airborne contaminant that may cause injury from fire or explosion?	Yes
F	Has a risk of engulfment in a stored free flowing solid or a rising level of liquid that may cause suffocation or drowning?	Yes
<b>Confined Space</b>	If the answer to A <b>and</b> B <b>and</b> at least one of C, D, E or F is Yes, then the space is a Confined Space.	<b>Yes</b>



Date	Amendment details	Approved by

# University of South Australia Confined Space Register 2012

Assessed by: AECOM Australia Pty Ltd

Date Assessed: 23/10/2012

Assessors: Daniel Alexander

Campus:	City East
Building:	Site
Space ID:	CE-site-04
Description:	Stormwater
Location:	W Side Building A, GPS: S 34°55.223' E 138°36.412'

UniSA deemed: **Confined Space**

UniSA deems a space Confined Space if either assessment criteria (shown below) results in Yes.

Number of Entrances:	1
Entry type:	Gatic over pit
Access type:	Ladder

Comments:	
Additional Hazards:	Low oxygen, Asphyxiant, Head impact, Engulfment, Manual handling, Constrained movement, Atmospheric contaminants

[View on plan](#)

[Return to Register](#)

Category	Criteria: Work Health and Safety Regulations 2012 (SA)	Result
A	Is the space enclosed or partially enclosed?	Yes
B	Is not designed or intended primarily to be occupied by a person?	Yes
C	Is, or is designed or intended to be, at normal atmospheric pressure while any person is in the space?	Yes
D	Is or is likely to be a risk to health and safety from:	
i)	an atmosphere that does not have a safe oxygen level?	Yes
ii)	contaminants, including airborne gases, vapours and dusts, that may cause injury from fire or explosion?	Yes
iii)	harmful concentrations of any airborne contaminants?	Yes
iv)	engulfment?	Yes
<b>Confined Space</b>	If the answer to A <b>and</b> B <b>and</b> C <b>and</b> at least one of D i), ii), iii) or iv) is Yes, then the space is a Confined Space.	<b>Yes</b>

Category	Criteria: AS2865-2009	Result
A	Is the space enclosed or partially enclosed?	Yes
B	Is not intended or designed primarily for human occupancy?	Yes
C	Has an oxygen concentration outside the safe oxygen range?	Yes
D	Has a concentration of airborne contaminant that may cause impairment, loss of consciousness or asphyxiation?	Yes
E	Has a concentration of flammable airborne contaminant that may cause injury from fire or explosion?	Yes
F	Has a risk of engulfment in a stored free flowing solid or a rising level of liquid that may cause suffocation or drowning?	Yes
<b>Confined Space</b>	If the answer to A <b>and</b> B <b>and</b> at least one of C, D, E or F is Yes, then the space is a Confined Space.	<b>Yes</b>



Date	Amendment details	Approved by

# University of South Australia Confined Space Register 2012

Assessed by: AECOM Australia Pty Ltd

Date Assessed: 23/10/2012

Assessors: Daniel Alexander

Campus:	City East
Building:	Site
Space ID:	CE-site-05
Description:	Stormwater
Location:	W Side Building A, GPS: S 34°55.233' E 138°36.400'

UniSA deemed: **Confined Space**

UniSA deems a space Confined Space if either assessment criteria (shown below) results in Yes.

Number of Entrances:	1
Entry type:	Gatic over pit
Access type:	Ladder

Comments:	
Additional Hazards:	Low oxygen, Asphyxiant, Head impact, Engulfment, Manual handling, Constrained movement, Atmospheric contaminants

[View on plan](#)

[Return to Register](#)

Category	Criteria: Work Health and Safety Regulations 2012 (SA)	Result
A	Is the space enclosed or partially enclosed?	Yes
B	Is not designed or intended primarily to be occupied by a person?	Yes
C	Is, or is designed or intended to be, at normal atmospheric pressure while any person is in the space?	Yes
D	Is or is likely to be a risk to health and safety from:	
i)	an atmosphere that does not have a safe oxygen level?	Yes
ii)	contaminants, including airborne gases, vapours and dusts, that may cause injury from fire or explosion?	Yes
iii)	harmful concentrations of any airborne contaminants?	Yes
iv)	engulfment?	Yes
<b>Confined Space</b>	If the answer to A <b>and</b> B <b>and</b> C <b>and</b> at least one of D i), ii), iii) or iv) is Yes, then the space is a Confined Space.	<b>Yes</b>

Category	Criteria: AS2865-2009	Result
A	Is the space enclosed or partially enclosed?	Yes
B	Is not intended or designed primarily for human occupancy?	Yes
C	Has an oxygen concentration outside the safe oxygen range?	Yes
D	Has a concentration of airborne contaminant that may cause impairment, loss of consciousness or asphyxiation?	Yes
E	Has a concentration of flammable airborne contaminant that may cause injury from fire or explosion?	Yes
F	Has a risk of engulfment in a stored free flowing solid or a rising level of liquid that may cause suffocation or drowning?	Yes
<b>Confined Space</b>	If the answer to A <b>and</b> B <b>and</b> at least one of C, D, E or F is Yes, then the space is a Confined Space.	<b>Yes</b>



Date	Amendment details	Approved by



# University of South Australia Confined Space Register 2012

Assessed by: AECOM Australia Pty Ltd

Date Assessed: 23/10/2012

Assessors: Daniel Alexander

Campus:	City East
Building:	Site
Space ID:	CE-site-07
Description:	Grease Trap
Location:	SW Corner Building P, GPS: S 34°55.201' E 138°36.393'

UniSA deemed: **Confined Space**

UniSA deems a space Confined Space if either assessment criteria (shown below) results in Yes.

Number of Entrances:	4
Entry type:	Gatic over pit
Access type:	Ladder

Comments:	
Additional Hazards:	Low oxygen, Asphyxiant, Head impact, Engulfment, Manual handling, Constrained movement, Atmospheric contaminants

[View on plan](#)

[Return to Register](#)

Category	Criteria: Work Health and Safety Regulations 2012 (SA)	Result
A	Is the space enclosed or partially enclosed?	Yes
B	Is not designed or intended primarily to be occupied by a person?	Yes
C	Is, or is designed or intended to be, at normal atmospheric pressure while any person is in the space?	Yes
D	Is or is likely to be a risk to health and safety from:	
i)	an atmosphere that does not have a safe oxygen level?	Yes
ii)	contaminants, including airborne gases, vapours and dusts, that may cause injury from fire or explosion?	Yes
iii)	harmful concentrations of any airborne contaminants?	Yes
iv)	engulfment?	Yes
<b>Confined Space</b>	If the answer to A <b>and</b> B <b>and</b> C <b>and</b> at least one of D i), ii), iii) or iv) is Yes, then the space is a Confined Space.	<b>Yes</b>

Category	Criteria: AS2865-2009	Result
A	Is the space enclosed or partially enclosed?	Yes
B	Is not intended or designed primarily for human occupancy?	Yes
C	Has an oxygen concentration outside the safe oxygen range?	Yes
D	Has a concentration of airborne contaminant that may cause impairment, loss of consciousness or asphyxiation?	Yes
E	Has a concentration of flammable airborne contaminant that may cause injury from fire or explosion?	Yes
F	Has a risk of engulfment in a stored free flowing solid or a rising level of liquid that may cause suffocation or drowning?	Yes
<b>Confined Space</b>	If the answer to A <b>and</b> B <b>and</b> at least one of C, D, E or F is Yes, then the space is a Confined Space.	<b>Yes</b>



Date	Amendment details	Approved by

# University of South Australia Confined Space Register 2012

Assessed by: AECOM Australia Pty Ltd

Date Assessed: 23/10/2012

Assessors: Daniel Alexander

Campus:	City East
Building:	Site
Space ID:	CE-site-08
Description:	Sewer
Location:	N Side Building BH, GPS: S 34°55.159' E 138°36.417'

UniSA deemed: **Confined Space**

UniSA deems a space Confined Space if either assessment criteria (shown below) results in Yes.

Number of Entrances:	3
Entry type:	Gatic over pit
Access type:	Ladder

Comments:	
Additional Hazards:	Low oxygen, Asphyxiant, Poisoning, Head impact, Engulfment, Manual handling, Constrained movement, Atmospheric contaminants

[View on plan](#)

[Return to Register](#)

Category	Criteria: Work Health and Safety Regulations 2012 (SA)	Result
A	Is the space enclosed or partially enclosed?	Yes
B	Is not designed or intended primarily to be occupied by a person?	Yes
C	Is, or is designed or intended to be, at normal atmospheric pressure while any person is in the space?	Yes
D	Is or is likely to be a risk to health and safety from:	
i)	an atmosphere that does not have a safe oxygen level?	Yes
ii)	contaminants, including airborne gases, vapours and dusts, that may cause injury from fire or explosion?	Yes
iii)	harmful concentrations of any airborne contaminants?	Yes
iv)	engulfment?	Yes
<b>Confined Space</b>	If the answer to A <b>and</b> B <b>and</b> C <b>and</b> at least one of D i), ii), iii) or iv) is Yes, then the space is a Confined Space.	<b>Yes</b>

Category	Criteria: AS2865-2009	Result
A	Is the space enclosed or partially enclosed?	Yes
B	Is not intended or designed primarily for human occupancy?	Yes
C	Has an oxygen concentration outside the safe oxygen range?	Yes
D	Has a concentration of airborne contaminant that may cause impairment, loss of consciousness or asphyxiation?	Yes
E	Has a concentration of flammable airborne contaminant that may cause injury from fire or explosion?	Yes
F	Has a risk of engulfment in a stored free flowing solid or a rising level of liquid that may cause suffocation or drowning?	Yes
<b>Confined Space</b>	If the answer to A <b>and</b> B <b>and</b> at least one of C, D, E or F is Yes, then the space is a Confined Space.	<b>Yes</b>



Date	Amendment details	Approved by

# University of South Australia Confined Space Register 2012

Assessed by: AECOM Australia Pty Ltd

Date Assessed: 23/10/2012

Assessors: Daniel Alexander

Campus:	City East
Building:	Site
Space ID:	<b>CE-site-09</b>
Description:	<b>Sump and Valve Pits</b>
Location:	NE Corner Building R, GPS: S 34°55.009' E 138°36.399'

UniSA deemed: **Confined Space**

UniSA deems a space Confined Space if either assessment criteria (shown below) results in Yes.

Number of Entrances:	1
Entry type:	Gatic over pit
Access type:	Ladder

Comments:	
Additional Hazards:	Low oxygen, Asphyxiant, Poisoning, Head impact, Engulfment, Manual handling, Constrained movement, Atmospheric contaminants

[View on plan](#)

[Return to Register](#)

Category	Criteria: Work Health and Safety Regulations 2012 (SA)	Result
A	Is the space enclosed or partially enclosed?	Yes
B	Is not designed or intended primarily to be occupied by a person?	Yes
C	Is, or is designed or intended to be, at normal atmospheric pressure while any person is in the space?	Yes
D	Is or is likely to be a risk to health and safety from:	
i)	an atmosphere that does not have a safe oxygen level?	Yes
ii)	contaminants, including airborne gases, vapours and dusts, that may cause injury from fire or explosion?	Yes
iii)	harmful concentrations of any airborne contaminants?	Yes
iv)	engulfment?	Yes
<b>Confined Space</b>	If the answer to A <b>and</b> B <b>and</b> C <b>and</b> at least one of D i), ii), iii) or iv) is Yes, then the space is a Confined Space.	<b>Yes</b>

Category	Criteria: AS2865-2009	Result
A	Is the space enclosed or partially enclosed?	Yes
B	Is not intended or designed primarily for human occupancy?	Yes
C	Has an oxygen concentration outside the safe oxygen range?	Yes
D	Has a concentration of airborne contaminant that may cause impairment, loss of consciousness or asphyxiation?	Yes
E	Has a concentration of flammable airborne contaminant that may cause injury from fire or explosion?	Yes
F	Has a risk of engulfment in a stored free flowing solid or a rising level of liquid that may cause suffocation or drowning?	Yes
<b>Confined Space</b>	If the answer to A <b>and</b> B <b>and</b> at least one of C, D, E or F is Yes, then the space is a Confined Space.	<b>Yes</b>



Date	Amendment details	Approved by

# University of South Australia Confined Space Register 2012

Assessed by: AECOM Australia Pty Ltd

Date Assessed: 23/10/2012

Assessors: Daniel Alexander

Campus:	City East
Building:	Site
Space ID:	<b>CE-site-10</b>
Description:	<b>Pits</b>
Location:	N Side Building R, GPS: S 34°55.004' E 138°36.385'

UniSA deemed: **Confined Space**

UniSA deems a space Confined Space if either assessment criteria (shown below) results in Yes.

Number of Entrances:	3
Entry type:	Steel cover over pit
Access type:	Ladder

Comments:	
Additional Hazards:	Low oxygen, Asphyxiant, Poisoning, Head impact, Engulfment, Manual handling, Constrained movement, Atmospheric contaminants

[View on plan](#)

[Return to Register](#)

Category	Criteria: Work Health and Safety Regulations 2012 (SA)	Result
A	Is the space enclosed or partially enclosed?	Yes
B	Is not designed or intended primarily to be occupied by a person?	Yes
C	Is, or is designed or intended to be, at normal atmospheric pressure while any person is in the space?	Yes
D	Is or is likely to be a risk to health and safety from:	
i)	an atmosphere that does not have a safe oxygen level?	Yes
ii)	contaminants, including airborne gases, vapours and dusts, that may cause injury from fire or explosion?	Yes
iii)	harmful concentrations of any airborne contaminants?	Yes
iv)	engulfment?	Yes
<b>Confined Space</b>	If the answer to A <b>and</b> B <b>and</b> C <b>and</b> at least one of D i), ii), iii) or iv) is Yes, then the space is a Confined Space.	<b>Yes</b>

Category	Criteria: AS2865-2009	Result
A	Is the space enclosed or partially enclosed?	Yes
B	Is not intended or designed primarily for human occupancy?	Yes
C	Has an oxygen concentration outside the safe oxygen range?	Yes
D	Has a concentration of airborne contaminant that may cause impairment, loss of consciousness or asphyxiation?	Yes
E	Has a concentration of flammable airborne contaminant that may cause injury from fire or explosion?	Yes
F	Has a risk of engulfment in a stored free flowing solid or a rising level of liquid that may cause suffocation or drowning?	Yes
<b>Confined Space</b>	If the answer to A <b>and</b> B <b>and</b> at least one of C, D, E or F is Yes, then the space is a Confined Space.	<b>Yes</b>



Date	Amendment details	Approved by

# University of South Australia Confined Space Register 2012

Assessed by: AECOM Australia Pty Ltd

Date Assessed: 23/10/2012

Assessors: Daniel Alexander

Campus:	City East
Building:	Site
Space ID:	CE-site-11
Description:	Sewer
Location:	NE Corner Building R, GPS: S 34°55.005' E 138°36.395'

UniSA deemed: **Confined Space**

UniSA deems a space Confined Space if either assessment criteria (shown below) results in Yes.

Number of Entrances:	4
Entry type:	Gatic over pit
Access type:	Ladder

Comments:	
Additional Hazards:	Low oxygen, Asphyxiant, Poisoning, Head impact, Engulfment, Manual handling, Constrained movement, Atmospheric contaminants

[View on plan](#)

[Return to Register](#)

Category	Criteria: Work Health and Safety Regulations 2012 (SA)	Result
A	Is the space enclosed or partially enclosed?	Yes
B	Is not designed or intended primarily to be occupied by a person?	Yes
C	Is, or is designed or intended to be, at normal atmospheric pressure while any person is in the space?	Yes
D	Is or is likely to be a risk to health and safety from:	
i)	an atmosphere that does not have a safe oxygen level?	Yes
ii)	contaminants, including airborne gases, vapours and dusts, that may cause injury from fire or explosion?	Yes
iii)	harmful concentrations of any airborne contaminants?	Yes
iv)	engulfment?	Yes
<b>Confined Space</b>	If the answer to A <b>and</b> B <b>and</b> C <b>and</b> at least one of D i), ii), iii) or iv) is Yes, then the space is a Confined Space.	<b>Yes</b>

Category	Criteria: AS2865-2009	Result
A	Is the space enclosed or partially enclosed?	Yes
B	Is not intended or designed primarily for human occupancy?	Yes
C	Has an oxygen concentration outside the safe oxygen range?	Yes
D	Has a concentration of airborne contaminant that may cause impairment, loss of consciousness or asphyxiation?	Yes
E	Has a concentration of flammable airborne contaminant that may cause injury from fire or explosion?	Yes
F	Has a risk of engulfment in a stored free flowing solid or a rising level of liquid that may cause suffocation or drowning?	Yes
<b>Confined Space</b>	If the answer to A <b>and</b> B <b>and</b> at least one of C, D, E or F is Yes, then the space is a Confined Space.	<b>Yes</b>



Date	Amendment details	Approved by

# University of South Australia Confined Space Register 2012

Assessed by: AECOM Australia Pty Ltd

Date Assessed: 23/10/2012

Assessors: Daniel Alexander

Campus:	City East
Building:	Site
Space ID:	CE-site-12
Description:	Stormwater
Location:	Between Building P and Building H, GPS: S 34°55.188' E 138°36.404'

UniSA deemed: Confined Space

UniSA deems a space Confined Space if either assessment criteria (shown below) results in Yes.

Number of Entrances:	1
Entry type:	Gatic over pit
Access type:	Ladder

Comments:	
Additional Hazards:	Low oxygen, Asphyxiant, Poisoning, Head impact, Engulfment, Manual handling, Constrained movement, Atmospheric contaminants

[View on plan](#)

[Return to Register](#)

Category	Criteria: Work Health and Safety Regulations 2012 (SA)	Result
A	Is the space enclosed or partially enclosed?	Yes
B	Is not designed or intended primarily to be occupied by a person?	Yes
C	Is, or is designed or intended to be, at normal atmospheric pressure while any person is in the space?	Yes
D	Is or is likely to be a risk to health and safety from:	
i)	an atmosphere that does not have a safe oxygen level?	Yes
ii)	contaminants, including airborne gases, vapours and dusts, that may cause injury from fire or explosion?	Yes
iii)	harmful concentrations of any airborne contaminants?	Yes
iv)	engulfment?	Yes
<b>Confined Space</b>	If the answer to A <b>and</b> B <b>and</b> C <b>and</b> at least one of D i), ii), iii) or iv) is Yes, then the space is a Confined Space.	<b>Yes</b>

Category	Criteria: AS2865-2009	Result
A	Is the space enclosed or partially enclosed?	Yes
B	Is not intended or designed primarily for human occupancy?	Yes
C	Has an oxygen concentration outside the safe oxygen range?	Yes
D	Has a concentration of airborne contaminant that may cause impairment, loss of consciousness or asphyxiation?	Yes
E	Has a concentration of flammable airborne contaminant that may cause injury from fire or explosion?	Yes
F	Has a risk of engulfment in a stored free flowing solid or a rising level of liquid that may cause suffocation or drowning?	Yes
<b>Confined Space</b>	If the answer to A <b>and</b> B <b>and</b> at least one of C, D, E or F is Yes, then the space is a Confined Space.	<b>Yes</b>



Date	Amendment details	Approved by



# University of South Australia Confined Space Register 2012

Assessed by: AECOM Australia Pty Ltd

Date Assessed: 23/10/2012

Assessors: Daniel Alexander

Campus:	City East
Building:	Site
Space ID:	CE-site-13
Description:	Stormwater
Location:	Between Building P and Building H, GPS: S 34°55.190' E 138°36.402'

UniSA deemed: **Confined Space**

UniSA deems a space Confined Space if either assessment criteria (shown below) results in Yes.

Number of Entrances:	1
Entry type:	Gatic over pit
Access type:	Ladder

Comments:	
Additional Hazards:	Low oxygen, Asphyxiant, Poisoning, Head impact, Engulfment, Manual handling, Constrained movement, Atmospheric contaminants

[View on plan](#)

[Return to Register](#)

Category	Criteria: Work Health and Safety Regulations 2012 (SA)	Result
A	Is the space enclosed or partially enclosed?	Yes
B	Is not designed or intended primarily to be occupied by a person?	Yes
C	Is, or is designed or intended to be, at normal atmospheric pressure while any person is in the space?	Yes
D	Is or is likely to be a risk to health and safety from:	
i)	an atmosphere that does not have a safe oxygen level?	Yes
ii)	contaminants, including airborne gases, vapours and dusts, that may cause injury from fire or explosion?	Yes
iii)	harmful concentrations of any airborne contaminants?	Yes
iv)	engulfment?	Yes
<b>Confined Space</b>	If the answer to A <b>and</b> B <b>and</b> C <b>and</b> at least one of D i), ii), iii) or iv) is Yes, then the space is a Confined Space.	<b>Yes</b>

Category	Criteria: AS2865-2009	Result
A	Is the space enclosed or partially enclosed?	Yes
B	Is not intended or designed primarily for human occupancy?	Yes
C	Has an oxygen concentration outside the safe oxygen range?	Yes
D	Has a concentration of airborne contaminant that may cause impairment, loss of consciousness or asphyxiation?	Yes
E	Has a concentration of flammable airborne contaminant that may cause injury from fire or explosion?	Yes
F	Has a risk of engulfment in a stored free flowing solid or a rising level of liquid that may cause suffocation or drowning?	Yes
<b>Confined Space</b>	If the answer to A <b>and</b> B <b>and</b> at least one of C, D, E or F is Yes, then the space is a Confined Space.	<b>Yes</b>



Date	Amendment details	Approved by

# University of South Australia Confined Space Register 2012

Assessed by: AECOM Australia Pty Ltd

Date Assessed: 23/10/2012

Assessors: Daniel Alexander

Campus:	City East
Building:	Site
Space ID:	CE-site-14
Description:	Stormwater
Location:	Between Building P and Building H, GPS: S 34°55.188' E 138°36.402'

UniSA deemed: **Confined Space**

UniSA deems a space Confined Space if either assessment criteria (shown below) results in Yes.

Number of Entrances:	1
Entry type:	Gatic over pit
Access type:	Ladder

Comments:	
Additional Hazards:	Low oxygen, Asphyxiant, Poisoning, Head impact, Engulfment, Manual handling, Constrained movement, Atmospheric contaminants

[View on plan](#)

[Return to Register](#)

Category	Criteria: Work Health and Safety Regulations 2012 (SA)	Result
A	Is the space enclosed or partially enclosed?	Yes
B	Is not designed or intended primarily to be occupied by a person?	Yes
C	Is, or is designed or intended to be, at normal atmospheric pressure while any person is in the space?	Yes
D	Is or is likely to be a risk to health and safety from:	
i)	an atmosphere that does not have a safe oxygen level?	Yes
ii)	contaminants, including airborne gases, vapours and dusts, that may cause injury from fire or explosion?	Yes
iii)	harmful concentrations of any airborne contaminants?	Yes
iv)	engulfment?	Yes
<b>Confined Space</b>	If the answer to A <b>and</b> B <b>and</b> C <b>and</b> at least one of D i), ii), iii) or iv) is Yes, then the space is a Confined Space.	<b>Yes</b>

Category	Criteria: AS2865-2009	Result
A	Is the space enclosed or partially enclosed?	Yes
B	Is not intended or designed primarily for human occupancy?	Yes
C	Has an oxygen concentration outside the safe oxygen range?	Yes
D	Has a concentration of airborne contaminant that may cause impairment, loss of consciousness or asphyxiation?	Yes
E	Has a concentration of flammable airborne contaminant that may cause injury from fire or explosion?	Yes
F	Has a risk of engulfment in a stored free flowing solid or a rising level of liquid that may cause suffocation or drowning?	Yes
<b>Confined Space</b>	If the answer to A <b>and</b> B <b>and</b> at least one of C, D, E or F is Yes, then the space is a Confined Space.	<b>Yes</b>



Date	Amendment details	Approved by



# University of South Australia Confined Space Register 2012

Assessed by: AECOM Australia Pty Ltd

Date Assessed: 23/10/2012

Assessors: Daniel Alexander

Campus:	City East
Building:	Site
Space ID:	<b>CE-site-15</b>
Description:	<b>Stormwater</b>
Location:	Between Building P and Building H, GPS: S 34°55.183' E 138°36.403'

UniSA deemed: **Confined Space**

UniSA deems a space Confined Space if either assessment criteria (shown below) results in Yes.

Number of Entrances:	1
Entry type:	Gatic over pit
Access type:	Ladder

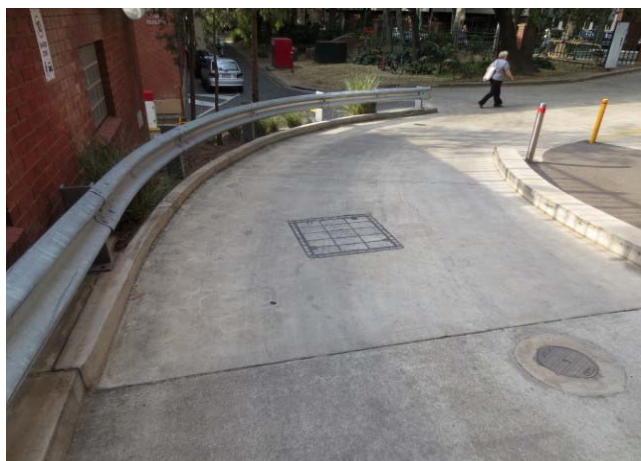
Comments:	
Additional Hazards:	Low oxygen, Asphyxiant, Poisoning, Head impact, Engulfment, Manual handling, Constrained movement, Atmospheric contaminants

[View on plan](#)

[Return to Register](#)

Category	Criteria: Work Health and Safety Regulations 2012 (SA)	Result
A	Is the space enclosed or partially enclosed?	Yes
B	Is not designed or intended primarily to be occupied by a person?	Yes
C	Is, or is designed or intended to be, at normal atmospheric pressure while any person is in the space?	Yes
D	Is or is likely to be a risk to health and safety from:	
i)	an atmosphere that does not have a safe oxygen level?	Yes
ii)	contaminants, including airborne gases, vapours and dusts, that may cause injury from fire or explosion?	Yes
iii)	harmful concentrations of any airborne contaminants?	Yes
iv)	engulfment?	Yes
<b>Confined Space</b>	If the answer to A <b>and</b> B <b>and</b> C <b>and</b> at least one of D i), ii), iii) or iv) is Yes, then the space is a Confined Space.	<b>Yes</b>

Category	Criteria: AS2865-2009	Result
A	Is the space enclosed or partially enclosed?	Yes
B	Is not intended or designed primarily for human occupancy?	Yes
C	Has an oxygen concentration outside the safe oxygen range?	Yes
D	Has a concentration of airborne contaminant that may cause impairment, loss of consciousness or asphyxiation?	Yes
E	Has a concentration of flammable airborne contaminant that may cause injury from fire or explosion?	Yes
F	Has a risk of engulfment in a stored free flowing solid or a rising level of liquid that may cause suffocation or drowning?	Yes
<b>Confined Space</b>	If the answer to A <b>and</b> B <b>and</b> at least one of C, D, E or F is Yes, then the space is a Confined Space.	<b>Yes</b>



Date	Amendment details	Approved by

# University of South Australia Confined Space Register 2012

Assessed by: AECOM Australia Pty Ltd

Date Assessed: 23/10/2012

Assessors: Daniel Alexander

Campus:	City East
Building:	Site
Space ID:	CE-site-16
Description:	Stormwater
Location:	Between Building P and Building H, GPS: S 34°55.191' E 138°36.407'

UniSA deemed: **Confined Space**

UniSA deems a space Confined Space if either assessment criteria (shown below) results in Yes.

Number of Entrances:	1
Entry type:	Gatic over pit
Access type:	Ladder

Comments:	
Additional Hazards:	Low oxygen, Asphyxiant, Poisoning, Head impact, Engulfment, Manual handling, Constrained movement, Atmospheric contaminants

[View on plan](#)

[Return to Register](#)







Category	Criteria: Work Health and Safety Regulations 2012 (SA)	Result
A	Is the space enclosed or partially enclosed?	Yes
B	Is not designed or intended primarily to be occupied by a person?	Yes
C	Is, or is designed or intended to be, at normal atmospheric pressure while any person is in the space?	Yes
D	Is or is likely to be a risk to health and safety from:	
i)	an atmosphere that does not have a safe oxygen level?	Yes
ii)	contaminants, including airborne gases, vapours and dusts, that may cause injury from fire or explosion?	Yes
iii)	harmful concentrations of any airborne contaminants?	Yes
iv)	engulfment?	Yes
<b>Confined Space</b>	If the answer to A <b>and</b> B <b>and</b> C <b>and</b> at least one of D i), ii), iii) or iv) is Yes, then the space is a Confined Space.	<b>Yes</b>

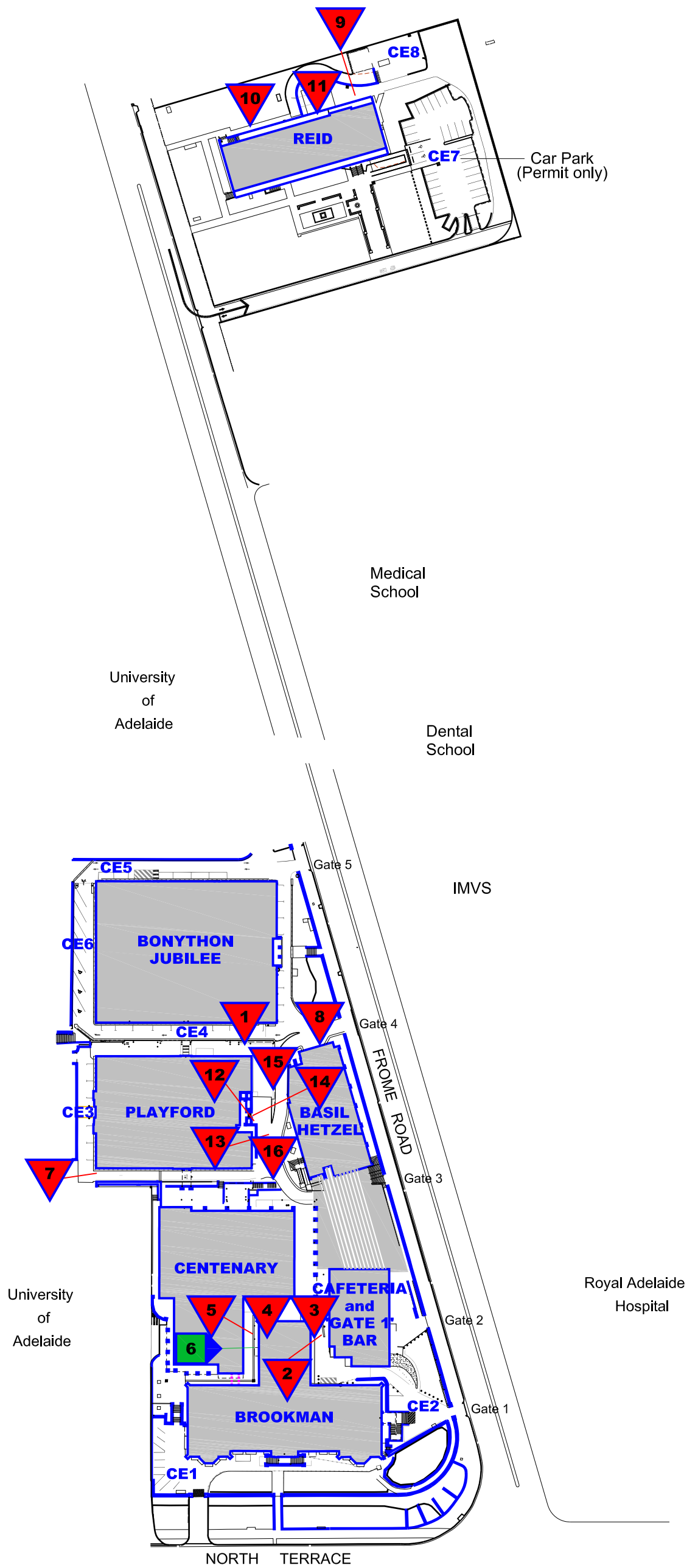
Category	Criteria: AS2865-2009	Result
A	Is the space enclosed or partially enclosed?	Yes
B	Is not intended or designed primarily for human occupancy?	Yes
C	Has an oxygen concentration outside the safe oxygen range?	Yes
D	Has a concentration of airborne contaminant that may cause impairment, loss of consciousness or asphyxiation?	Yes
E	Has a concentration of flammable airborne contaminant that may cause injury from fire or explosion?	Yes
F	Has a risk of engulfment in a stored free flowing solid or a rising level of liquid that may cause suffocation or drowning?	Yes
<b>Confined Space</b>	If the answer to A <b>and</b> B <b>and</b> at least one of C, D, E or F is Yes, then the space is a Confined Space.	<b>Yes</b>



Date	Amendment details	Approved by

## LEGEND

- RED Deemed Confined Space**  
**GREEN Deemed Non-Confined Space**
-  ROOM
  -  ABOVE OR BELOW CURRENT LEVEL
  -  WITHIN ROOM
  -  ACCESS TO ABOVE
  -  ACCESS TO BELOW
  -  ACCESS DIRECTION (relative to plan)

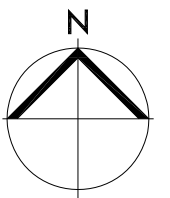


Prepared by the Facilities Management Unit

# City East Campus

0 20 40 60 80 100m

**CONFINED SPACE**



## **Appendix**

### **Register of other spaces assessed**

**City East**  
**Campus Site**

**This Register does not remove the requirement for  
contractors to complete their own work-based risk assessment.**

GPS Datum: Insert datum point reference here

Version 1

Space ID	Space description	Location description	GPS reference	Confined Space according to Work Health and Safety Regulations 2012 (SA)?	Confined Space according to AS 2865-2009?	UniSA deemed Confined Space?	Comments	Link to details	Link to Plan
CE-site-06	Air Con Plant	W Side Building B	S 34°55.233' E138°36.397'	No	No	Non-Confined Space	This is a restricted space	<a href="#">CE-site-06</a>	<a href="#">Site</a>

# University of South Australia Confined Space Register 2012

Assessed by: AECOM Australia Pty Ltd

Date Assessed: 23/10/2012

Assessors: Daniel Alexander

Campus:	City East
Building:	Site
Space ID:	CE-site-06
Description:	Air Con Plant
Location:	W Side Building B, GPS: S 34°55.233' E 138°36.397'

UniSA deemed: **Non-Confined Space**

UniSA deems a space Confined Space if either assessment criteria (shown below) results in Yes.

Number of Entrances:	1
Entry type:	Side hatch
Access type:	Requires manoeuvring

Comments:	This is a restricted space
Additional Hazards:	Head impact, Cold Stress, Manual handling, Constrained movement

[View on plan](#)

[Return to Register](#)

Category	Criteria: Work Health and Safety Regulations 2012 (SA)	Result
A	Is the space enclosed or partially enclosed?	Yes
B	Is not designed or intended primarily to be occupied by a person?	Yes
C	Is, or is designed or intended to be, at normal atmospheric pressure while any person is in the space?	Yes
D	Is or is likely to be a risk to health and safety from:	
i)	an atmosphere that does not have a safe oxygen level?	No
ii)	contaminants, including airborne gases, vapours and dusts, that may cause injury from fire or explosion?	No
iii)	harmful concentrations of any airborne contaminants?	No
iv)	engulfment?	No
<b>Confined Space</b>	If the answer to A <b>and</b> B <b>and</b> C <b>and</b> at least one of D i), ii), iii) or iv) is Yes, then the space is a Confined Space.	No

Category	Criteria: AS2865-2009	Result
A	Is the space enclosed or partially enclosed?	Yes
B	Is not intended or designed primarily for human occupancy?	Yes
C	Has an oxygen concentration outside the safe oxygen range?	No
D	Has a concentration of airborne contaminant that may cause impairment, loss of consciousness or asphyxiation?	No
E	Has a concentration of flammable airborne contaminant that may cause injury from fire or explosion?	No
F	Has a risk of engulfment in a stored free flowing solid or a rising level of liquid that may cause suffocation or drowning?	No
<b>Confined Space</b>	If the answer to A <b>and</b> B <b>and</b> at least one of C, D, E or F is Yes, then the space is a Confined Space.	No



Date	Amendment details	Approved by