



University of
South Australia

Confined Space Register 2012

Original assessment by AECOM Australia Pty Ltd



City West

Barbara Hanrahan Building (BH)

Version 1

Note: document links in blue underline text
Symbols on plans are also links

Version No.	Date	Amendment details	Approved by
1	10/10/2012	Original version as assessed by AECOM Australia Pty Ltd	-

**This Confined Space Register does not remove the requirement for
contractors to complete their own work-based risk assessment.**

Please [refer to Appendix](#) for other spaces assessed.

AECOM

Declassifying Statement

AECOM's assessment of a confined space was based on the information provided by the University of South Australia (UniSA) site representative and visual observation on the day. Risk assessment and hazard identification of a confined space was classified in accordance with:

- Work Health and Safety Regulations 2012 (SA);
- AS2865-2009.

Should UniSA wish to declassify a space which AECOM has deemed to be a 'Confined Space', *section 2.4.6 of AS 2865-2009* must be adhered to as stated below.

"For a space which has previously been classified as a confined space to be reclassified as a non-confined space, it needs to have undergone sufficient changes in structure or usages to eliminate (without the need for risk control measures) all possible sources of inherent hazard that define a confined space. Any changes to a confined space would have to be such that a subsequent risk assessment would determine that it no longer meets the criteria for a confined space".

Sufficient evidence to show that the statement above has been met must be provided to the University of South Australia Facilities Management Unit who has the appropriate privilege to alter the Confined Space Register.

Confined Space Register 2012
Assessed by AECOM Australia Pty Ltd, June to December 2012
City West
Barbara Hanrahan Building (BH)

Version 1

Space ID	Space description	Location	Confined Space according to Work Health and Safety Regulations 2012 (SA)?	Confined Space according to AS 2865-2009?	UniSA deemed Confined Space?	Comments	Link to details	Link to Plan
CW-BH-51	Ceiling Space	BH2-35	Yes	No	Confined Space	This is a restricted space	CW-BH-51	Level 2
CW-BH-52	Flue	BH2-30	Yes	Yes	Confined Space		CW-BH-52	Level 2
CW-BH-53	Ceiling Space	BH2-29	Yes	No	Confined Space	This is a restricted space	CW-BH-53	Level 2

University of South Australia Confined Space Register 2012

Assessed by: AECOM Australia Pty Ltd

Date Assessed: 10/10/2012

Assessors: Daniel Alexander

Campus:	City West
Building:	BH
Space ID:	CW-BH-51
Description:	Ceiling Space
Location:	BH2-35

UniSA deemed: **Confined Space**

UniSA deems a space Confined Space if either assessment criteria (shown below) results in Yes.

Number of Entrances:	1
Entry type:	Overhead hatch
Access type:	Ladder

Comments:	This is a restricted space
Additional Hazards:	Fall from heights, Slips trips and falls, Constrained movement

[View on plan](#)

[Return to Register](#)

Category	Criteria: Work Health and Safety Regulations 2012 (SA)	Result
A	Is the space enclosed or partially enclosed?	Yes
B	Is not designed or intended primarily to be occupied by a person?	Yes
C	Is, or is designed or intended to be, at normal atmospheric pressure while any person is in the space?	Yes
D	Is or is likely to be a risk to health and safety from:	
i)	an atmosphere that does not have a safe oxygen level?	No
ii)	contaminants, including airborne gases, vapours and dusts, that may cause injury from fire or explosion?	Yes
iii)	harmful concentrations of any airborne contaminants?	No
iv)	engulfment?	No
Confined Space	If the answer to A and B and C and at least one of D i), ii), iii) or iv) is Yes, then the space is a Confined Space.	Yes

Category	Criteria: AS2865-2009	Result
A	Is the space enclosed or partially enclosed?	Yes
B	Is not intended or designed primarily for human occupancy?	Yes
C	Has an oxygen concentration outside the safe oxygen range?	No
D	Has a concentration of airborne contaminant that may cause impairment, loss of consciousness or asphyxiation?	No
E	Has a concentration of flammable airborne contaminant that may cause injury from fire or explosion?	No
F	Has a risk of engulfment in a stored free flowing solid or a rising level of liquid that may cause suffocation or drowning?	No
Confined Space	If the answer to A and B and at least one of C, D, E or F is Yes, then the space is a Confined Space.	No



Date	Amendment details	Approved by

University of South Australia Confined Space Register 2012

Assessed by: AECOM Australia Pty Ltd

Date Assessed: 10/10/2012

Assessors: Daniel Alexander

Campus:	City West
Building:	BH
Space ID:	CW-BH-52
Description:	Flue
Location:	BH2-30

UniSA deemed: **Confined Space**

UniSA deems a space Confined Space if either assessment criteria (shown below) results in Yes.

Number of Entrances:	1
Entry type:	Side hatch
Access type:	Requires manoeuvring

Comments:	
Additional Hazards:	Low oxygen, Asphyxiant, Head impact, Constrained movement, Atmospheric contaminants

[View on plan](#)

[Return to Register](#)

Category	Criteria: Work Health and Safety Regulations 2012 (SA)	Result
A	Is the space enclosed or partially enclosed?	Yes
B	Is not designed or intended primarily to be occupied by a person?	Yes
C	Is, or is designed or intended to be, at normal atmospheric pressure while any person is in the space?	Yes
D	Is or is likely to be a risk to health and safety from:	
i)	an atmosphere that does not have a safe oxygen level?	Yes
ii)	contaminants, including airborne gases, vapours and dusts, that may cause injury from fire or explosion?	Yes
iii)	harmful concentrations of any airborne contaminants?	Yes
iv)	engulfment?	No
Confined Space	If the answer to A and B and C and at least one of D i), ii), iii) or iv) is Yes, then the space is a Confined Space.	Yes

Category	Criteria: AS2865-2009	Result
A	Is the space enclosed or partially enclosed?	Yes
B	Is not intended or designed primarily for human occupancy?	Yes
C	Has an oxygen concentration outside the safe oxygen range?	Yes
D	Has a concentration of airborne contaminant that may cause impairment, loss of consciousness or asphyxiation?	Yes
E	Has a concentration of flammable airborne contaminant that may cause injury from fire or explosion?	No
F	Has a risk of engulfment in a stored free flowing solid or a rising level of liquid that may cause suffocation or drowning?	No
Confined Space	If the answer to A and B and at least one of C, D, E or F is Yes, then the space is a Confined Space.	Yes



Date	Amendment details	Approved by

University of South Australia Confined Space Register 2012

Assessed by: AECOM Australia Pty Ltd

Date Assessed: 10/10/2012

Assessors: Daniel Alexander

Campus:	City West
Building:	BH
Space ID:	CW-BH-53
Description:	Ceiling Space
Location:	BH2-29

UniSA deemed: **Confined Space**

UniSA deems a space Confined Space if either assessment criteria (shown below) results in Yes.

Number of Entrances:	1
Entry type:	Overhead hatch
Access type:	Ladder

Comments:	This is a restricted space
Additional Hazards:	Fall from heights, Slips trips and falls, Constrained movement

[View on plan](#)

[Return to Register](#)

Category	Criteria: Work Health and Safety Regulations 2012 (SA)	Result
A	Is the space enclosed or partially enclosed?	Yes
B	Is not designed or intended primarily to be occupied by a person?	Yes
C	Is, or is designed or intended to be, at normal atmospheric pressure while any person is in the space?	Yes
D	Is or is likely to be a risk to health and safety from:	
i)	an atmosphere that does not have a safe oxygen level?	No
ii)	contaminants, including airborne gases, vapours and dusts, that may cause injury from fire or explosion?	Yes
iii)	harmful concentrations of any airborne contaminants?	No
iv)	engulfment?	No
Confined Space	If the answer to A and B and C and at least one of D i), ii), iii) or iv) is Yes, then the space is a Confined Space.	Yes

Category	Criteria: AS2865-2009	Result
A	Is the space enclosed or partially enclosed?	Yes
B	Is not intended or designed primarily for human occupancy?	Yes
C	Has an oxygen concentration outside the safe oxygen range?	No
D	Has a concentration of airborne contaminant that may cause impairment, loss of consciousness or asphyxiation?	No
E	Has a concentration of flammable airborne contaminant that may cause injury from fire or explosion?	No
F	Has a risk of engulfment in a stored free flowing solid or a rising level of liquid that may cause suffocation or drowning?	No
Confined Space	If the answer to A and B and at least one of C, D, E or F is Yes, then the space is a Confined Space.	No

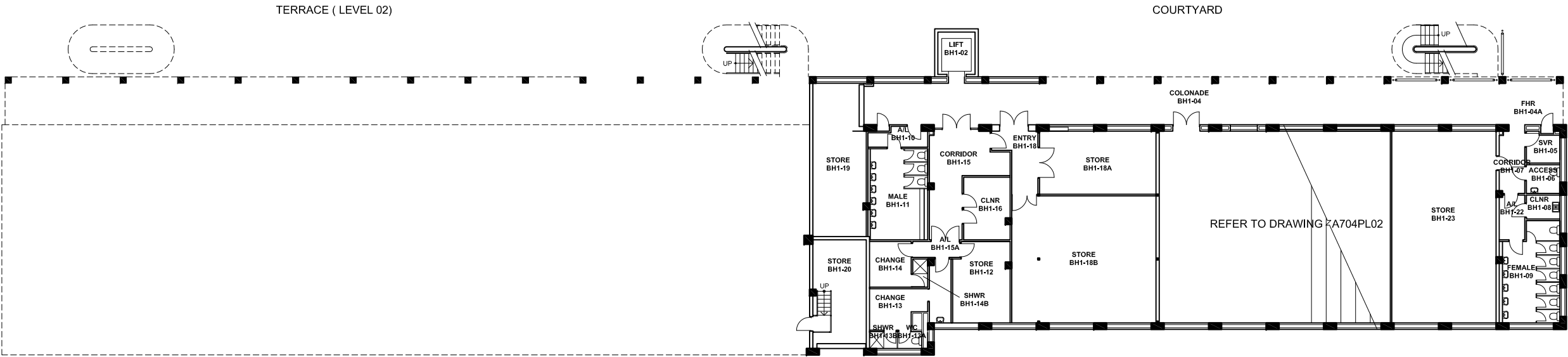


Date	Amendment details	Approved by

All drawings remain the property of the University of South Australia and must be returned upon request. These drawings are subject to change without notice. Any errors and/or omissions should be reported to the Facilities Management Unit.

LEGEND

- RED Deemed Confined Space
- GREEN Deemed Non-Confined Space
- 1 ROOM
- 1 ABOVE OR BELOW CURRENT LEVEL
- 1 WITHIN ROOM
- 1 ACCESS TO ABOVE
- 1 ACCESS TO BELOW
- 1 ACCESS DIRECTION (relative to plan)



UNIVERSITY OF SOUTH AUSTRALIA

FACILITIES MANAGEMENT UNIT

Level 2,
101 Currie Street,
Adelaide. SA 5000
Phone 8302 2762
Fax 8302 2708

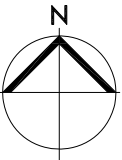
CONFINED SPACE

CITY WEST CAMPUS

Building
BARBARA HANRAHAN
BUILDING BH
LEVEL 01

Scale: Not to scale	Drawn: SMG
Last Update: 30/01/2013	Plot Date: 06/09/2012 08:49

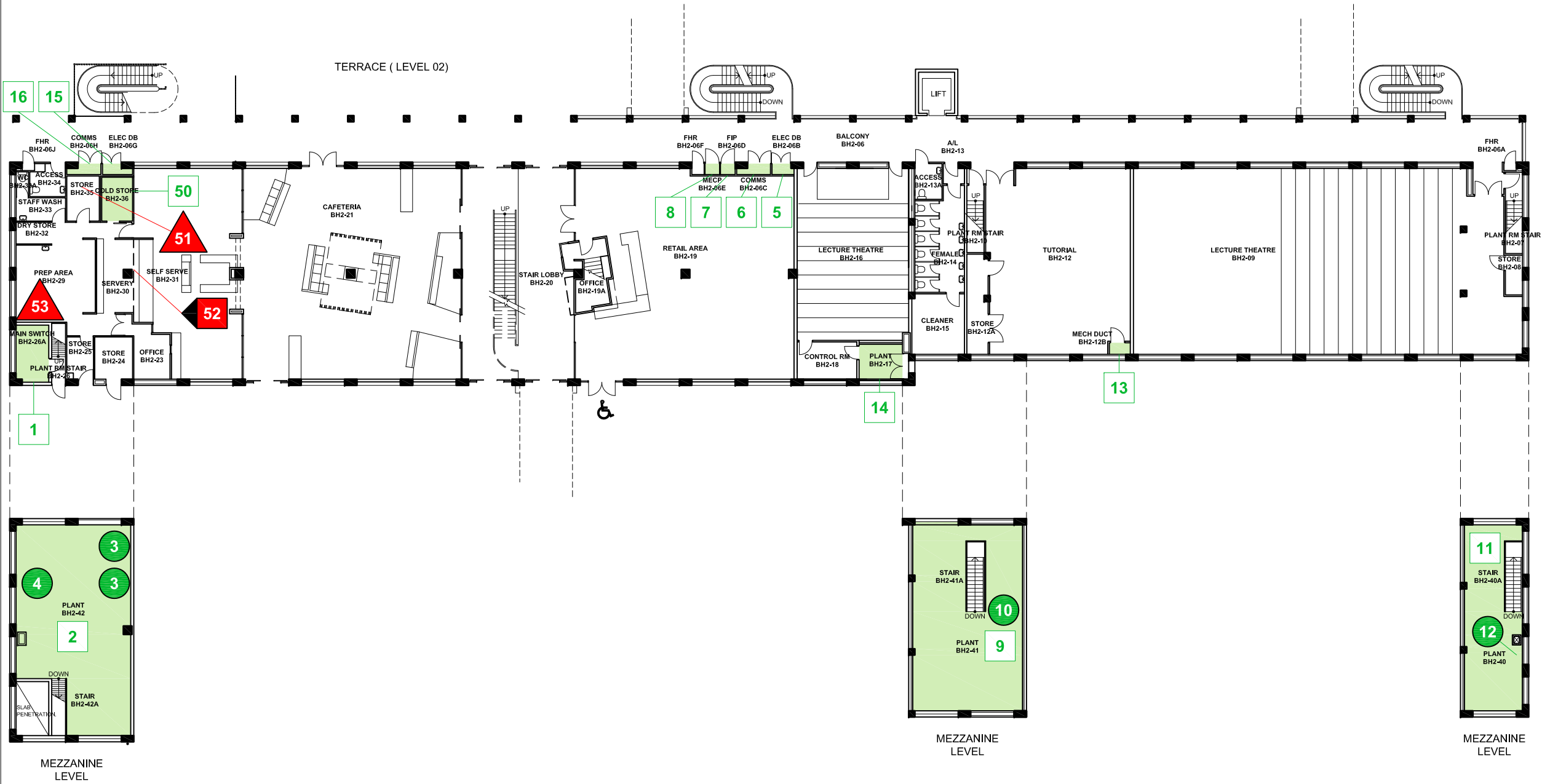
Drawing No.: H704CS01	Revision: A
--------------------------	----------------



All drawings remain the property of the University of South Australia and must be returned upon request. These drawings are subject to change without notice. Any errors and/or omissions should be reported to the Facilities Management Unit.

LEGEND

- RED Deemed Confined Space
- GREEN Deemed Non-Confined Space
- 1 ROOM
- 1 ABOVE OR BELOW CURRENT LEVEL
- 1 WITHIN ROOM
- 1 ACCESS TO ABOVE
- 1 ACCESS TO BELOW
- 1 ACCESS DIRECTION (relative to plan)



UNIVERSITY OF SOUTH AUSTRALIA

FACILITIES MANAGEMENT UNIT

Level 2,
101 Currie Street,
Adelaide. SA 5000
Phone 8302 2762
Fax 8302 2708

CONFINED SPACE

CITY WEST CAMPUS

Building
BARBARA HANRAHAN
BUILDING BH
LEVEL 02

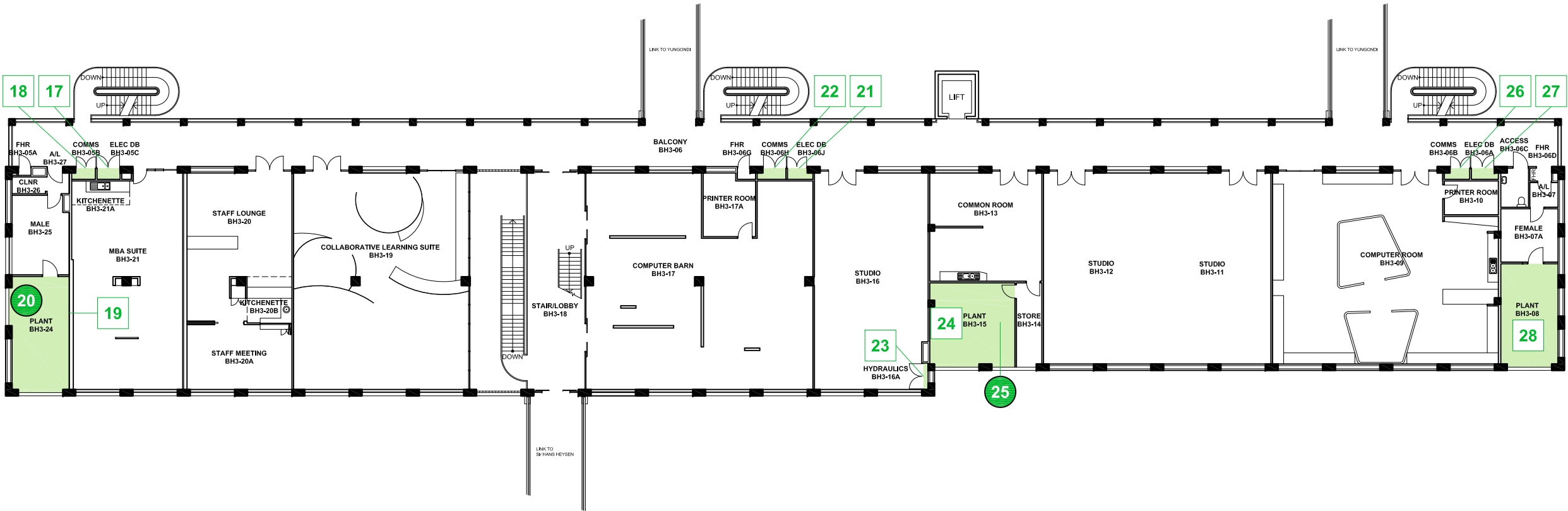
Scale: Not to scale	Drawn: SMG
Last Update: 30/01/2013	Plot Date: 06/09/2012 08:49

Drawing No.: H704CS02	Revision: A
--------------------------	----------------

All drawings remain the property of the University of South Australia and must be returned upon request. These drawings are subject to change without notice. Any errors and/or omissions should be reported to the Facilities Management Unit.

LEGEND

- RED Deemed Confined Space
- GREEN Deemed Non-Confined Space
- 1 ROOM
- 1 ABOVE OR BELOW CURRENT LEVEL
- 1 WITHIN ROOM
- 1 ACCESS TO ABOVE
- 1 ACCESS TO BELOW
- 1 ACCESS DIRECTION (relative to plan)



UNIVERSITY OF SOUTH AUSTRALIA

FACILITIES MANAGEMENT UNIT

Level 2,
101 Currie Street,
Adelaide. SA 5000
Phone 8302 2762
Fax 8302 2708

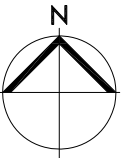
CONFINED SPACE

CITY WEST CAMPUS

Building
BARBARA HANRAHAN
BUILDING BH
LEVEL 03

Scale: Not to scale	Drawn: SMG
Last Update: 31/01/2013	Plot Date: 06/09/2012 08:49

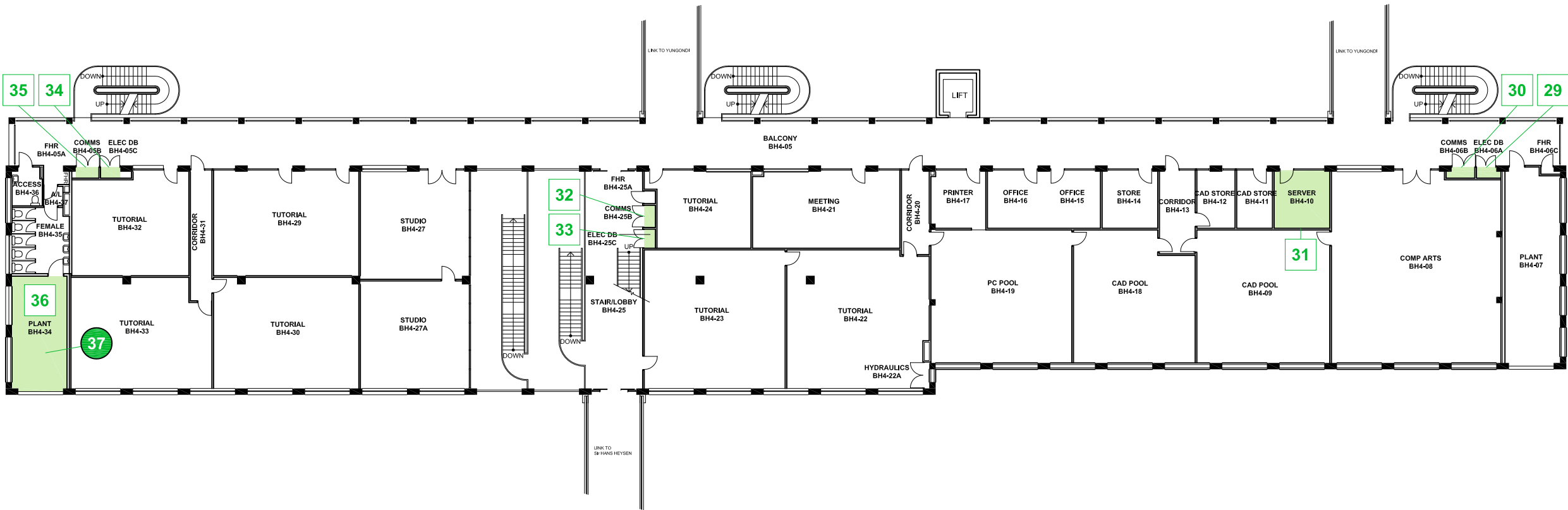
Drawing No.: H704CS03	Revision: A
--------------------------	----------------



All drawings remain the property of the University of South Australia and must be returned upon request. These drawings are subject to change without notice. Any errors and/or omissions should be reported to the Facilities Management Unit.

LEGEND

- RED Deemed Confined Space
- GREEN Deemed Non-Confined Space
- 1 ROOM
- 1 ABOVE OR BELOW CURRENT LEVEL
- 1 WITHIN ROOM
- 1 ACCESS TO ABOVE
- 1 ACCESS TO BELOW
- 1 ACCESS DIRECTION (relative to plan)



UNIVERSITY OF SOUTH AUSTRALIA

FACILITIES MANAGEMENT UNIT

Level 2,
101 Currie Street,
Adelaide. SA 5000
Phone 8302 2762
Fax 8302 2708

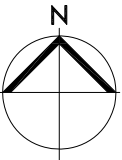
CONFINED SPACE

CITY WEST CAMPUS

Building
BARBARA HANRAHAN
BUILDING BH
LEVEL 04

Scale: Not to scale	Drawn: SMG
Last Update: 31/01/2013	Plot Date: 06/09/2012 08:49

Drawing No.: H704CS04	Revision: A
--------------------------	----------------



LEGEND

GREEN Deemed Non-Confined Space

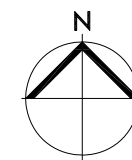
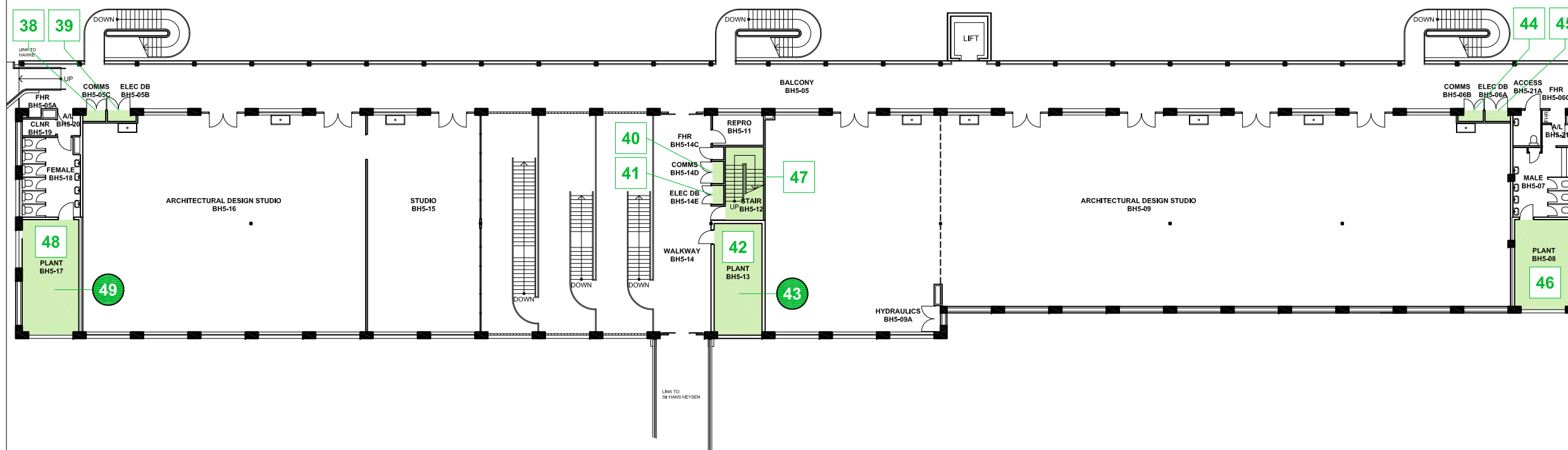
1 ACCESS DIRECTION (relative to plan)



Level 2,
101 Currie Street,
Adelaide. SA 5000
Phone 8302 2762
Fax 8302 2708

CITY WEST CAMPUS

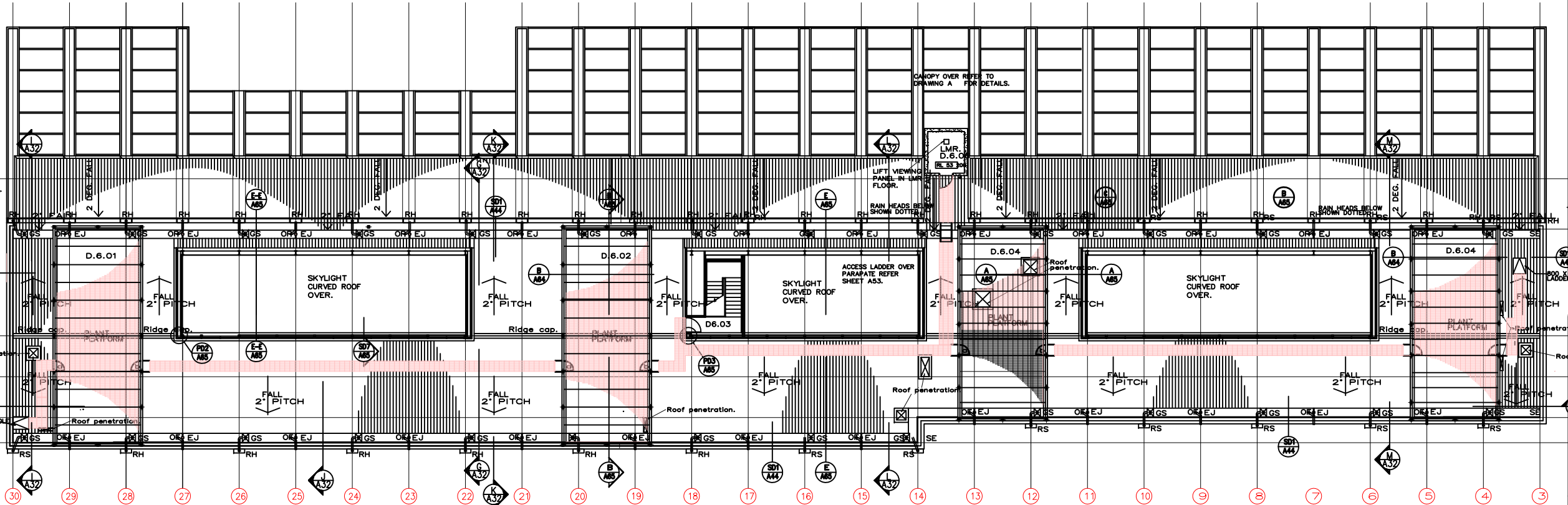
Drawing No.:	Revision:
H704CS05	A



All drawings remain the property of the University of South Australia and must be returned upon request. These drawings are subject to change without notice. Any errors and/or omissions should be reported to the Facilities Management Unit.

LEGEND

- RED Deemed Confined Space
- GREEN Deemed Non-Confined Space
- 1 ROOM
- 1 ABOVE OR BELOW CURRENT LEVEL
- 1 WITHIN ROOM
- 1 ACCESS TO ABOVE
- 1 ACCESS TO BELOW
- 1 ACCESS DIRECTION (relative to plan)



BUILDING D.



UNIVERSITY OF SOUTH AUSTRALIA

FACILITIES MANAGEMENT UNIT

Level 2,
101 Currie Street,
Adelaide. SA 5000
Phone 8302 2762
Fax 8302 2708

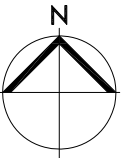
CONFINED SPACE

CITY WEST CAMPUS

Building
BARBARA HANRAHAN
BUILDING BH
LEVEL 06

Scale: Not to scale	Drawn: SMG
Last Update: 31/01/2013	Plot Date: 06/09/2012 08:49

Drawing No.: H704CS06	Revision: A
--------------------------	----------------



Appendix

Register of other spaces assessed

City West

Barbara Hanrahan Building (BH)

**This Register does not remove the requirement for
contractors to complete their own work-based risk assessment.**

Space ID	Space description	Location	Confined Space according to Work Health and Safety Regulations 2012 (SA)?	Confined Space according to AS 2865-2009?	UniSA deemed Confined Space?	Comments	Link to details	Link to Plan
CW-BH-01	Main Switch	BH2-26a	No	No	Non-Confined Space	This is a restricted space	CW-BH-01	Level 2
CW-BH-02	Plant Room	BH2-42	No	No	Non-Confined Space	This is a restricted space	CW-BH-02	Level 2
CW-BH-03	Air Handling Unit x 2	BH2-42	No	No	Non-Confined Space	This is a restricted space	CW-BH-03	Level 2
CW-BH-04	Duct	BH2-42	No	No	Non-Confined Space	This is a restricted space	CW-BH-04	Level 2
CW-BH-05	Electrical Distribution Board	BH2-06b	No	No	Non-Confined Space	This is a restricted space	CW-BH-05	Level 2
CW-BH-06	Comms	BH2-06c	No	No	Non-Confined Space	This is a restricted space	CW-BH-06	Level 2
CW-BH-07	Fire Indicator Panel	BH2-06d	No	No	Non-Confined Space	This is a restricted space	CW-BH-07	Level 2
CW-BH-08	MECP	BH2-06e	No	No	Non-Confined Space	This is a restricted space	CW-BH-08	Level 2
CW-BH-09	Plant Room	BH2-41	No	No	Non-Confined Space	This is a restricted space	CW-BH-09	Level 2
CW-BH-10	Air Handling Unit	BH2-41	No	No	Non-Confined Space	This is a restricted space	CW-BH-10	Level 2
CW-BH-11	Plant Room	BH2-40	No	No	Non-Confined Space	This is a restricted space	CW-BH-11	Level 2
CW-BH-12	Air Handling Unit	BH2-40	No	No	Non-Confined Space	This is a restricted space	CW-BH-12	Level 2
CW-BH-13	Duct	BH2-12b	No	No	Non-Confined Space	This is a restricted space	CW-BH-13	Level 2
CW-BH-14	Plant Room	BH2-17	No	No	Non-Confined Space	This is a restricted space	CW-BH-14	Level 2
CW-BH-15	Electrical Distribution Board	BH2-06g	No	No	Non-Confined Space	This is a restricted space	CW-BH-15	Level 2
CW-BH-16	Comms	BH2-06h	No	No	Non-Confined Space	This is a restricted space	CW-BH-16	Level 2
CW-BH-17	Electrical Distribution Board	BH3-05c	No	No	Non-Confined Space	This is a restricted space	CW-BH-17	Level 3
CW-BH-18	Comms	BH3-05b	No	No	Non-Confined Space	This is a restricted space	CW-BH-18	Level 3
CW-BH-19	Plant Room	BH3-24	No	No	Non-Confined Space	This is a restricted space	CW-BH-19	Level 3
CW-BH-20	Air Handling Unit	BH3-24	No	No	Non-Confined Space	This is a restricted space	CW-BH-20	Level 3
CW-BH-21	Electrical Distribution Board	BH3-06j	No	No	Non-Confined Space	This is a restricted space	CW-BH-21	Level 3
CW-BH-22	Comms	BH3-06h	No	No	Non-Confined Space	This is a restricted space	CW-BH-22	Level 3
CW-BH-23	Hydraulic Riser	BH3-16a	No	No	Non-Confined Space	This is a restricted space	CW-BH-23	Level 3
CW-BH-24	Plant Room	BH3-15	No	No	Non-Confined Space	This is a restricted space	CW-BH-24	Level 3
CW-BH-25	Air Handling Unit	BH3-15	No	No	Non-Confined Space	This is a restricted space	CW-BH-25	Level 3
CW-BH-26	Comms	BH3-06b	No	No	Non-Confined Space	This is a restricted space	CW-BH-26	Level 3
CW-BH-27	Electrical Distribution Board	BH3-06a	No	No	Non-Confined Space	This is a restricted space	CW-BH-27	Level 3
CW-BH-28	Plant Room	BH3-08	No	No	Non-Confined Space	This is a restricted space	CW-BH-28	Level 3
CW-BH-29	Electrical Distribution Board	BH4-06a	No	No	Non-Confined Space	This is a restricted space	CW-BH-29	Level 4
CW-BH-30	Comms	BH4-06b	No	No	Non-Confined Space	This is a restricted space	CW-BH-30	Level 4
CW-BH-31	Server	BH4-10	No	No	Non-Confined Space	This is a restricted space	CW-BH-31	Level 4
CW-BH-32	Comms	BH4-25b	No	No	Non-Confined Space	This is a restricted space	CW-BH-32	Level 4
CW-BH-33	Electrical Distribution Board	BH4-25c	No	No	Non-Confined Space	This is a restricted space	CW-BH-33	Level 4
CW-BH-34	Electrical Distribution Board	BH4-05c	No	No	Non-Confined Space	This is a restricted space	CW-BH-34	Level 4
CW-BH-35	Comms	BH4-05b	No	No	Non-Confined Space	This is a restricted space	CW-BH-35	Level 4
CW-BH-36	Plant Room	BH4-34	No	No	Non-Confined Space	This is a restricted space	CW-BH-36	Level 4
CW-BH-37	Air Handling Unit	BH4-34	No	No	Non-Confined Space	This is a restricted space	CW-BH-37	Level 4
CW-BH-38	Comms	BH5-05c	No	No	Non-Confined Space	This is a restricted space	CW-BH-38	Level 5
CW-BH-39	Electrical Distribution Board	BH5-05b	No	No	Non-Confined Space	This is a restricted space	CW-BH-39	Level 5
CW-BH-40	Comms	BH5-14d	No	No	Non-Confined Space	This is a restricted space	CW-BH-40	Level 5

Space ID	Space description	Location	Confined Space according to Work Health and Safety Regulations 2012 (SA)?	Confined Space according to AS 2865-2009?	UniSA deemed Confined Space?	Comments	Link to details	Link to Plan
CW-BH-41	Electrical Distribution Board	BH5-14e	No	No	Non-Confined Space	This is a restricted space	CW-BH-41	Level 5
CW-BH-42	Plant Room	BH5-13	No	No	Non-Confined Space	This is a restricted space	CW-BH-42	Level 5
CW-BH-43	Duct	BH5-13	No	No	Non-Confined Space	This is a restricted space	CW-BH-43	Level 5
CW-BH-44	Comms	BH5-06b	No	No	Non-Confined Space	This is a restricted space	CW-BH-44	Level 5
CW-BH-45	Electrical Distribution Board	BH5-06a	No	No	Non-Confined Space	This is a restricted space	CW-BH-45	Level 5
CW-BH-46	Plant Room	BH5-08	No	No	Non-Confined Space	This is a restricted space	CW-BH-46	Level 5
CW-BH-47	Roof Access	BH5-12	No	No	Non-Confined Space	This is a restricted space	CW-BH-47	Level 5
CW-BH-48	Plant Room	BH5-17	No	No	Non-Confined Space	This is a restricted space	CW-BH-48	Level 5
CW-BH-49	Air Handling Unit	BH5-17	No	No	Non-Confined Space	This is a restricted space	CW-BH-49	Level 5
CW-BH-50	Cold Store	BH2-36	No	No	Non-Confined Space	This is a restricted space	CW-BH-50	Level 2

University of South Australia Confined Space Register 2012

Assessed by: AECOM Australia Pty Ltd

Date Assessed: 10/10/2012

Assessors: Daniel Alexander

Campus:	City West
Building:	BH
Space ID:	CW-BH-01
Description:	Main Switch
Location:	BH2-26a

UniSA deemed:

Non-Confined Space

UniSA deems a space Confined Space if either assessment criteria (shown below) results in Yes.

Number of Entrances:	1
Entry type:	Door / Gate
Access type:	Easy access

Comments:	This is a restricted space
Additional Hazards:	Electrical

[View on plan](#)

[Return to Register](#)

Category	Criteria: Work Health and Safety Regulations 2012 (SA)	Result
A	Is the space enclosed or partially enclosed?	Yes
B	Is not designed or intended primarily to be occupied by a person?	No
C	Is, or is designed or intended to be, at normal atmospheric pressure while any person is in the space?	Yes
D	Is or is likely to be a risk to health and safety from:	
i)	an atmosphere that does not have a safe oxygen level?	No
ii)	contaminants, including airborne gases, vapours and dusts, that may cause injury from fire or explosion?	No
iii)	harmful concentrations of any airborne contaminants?	No
iv)	engulfment?	No
Confined Space	If the answer to A and B and C and at least one of D i), ii), iii) or iv) is Yes, then the space is a Confined Space.	No

Category	Criteria: AS2865-2009	Result
A	Is the space enclosed or partially enclosed?	Yes
B	Is not intended or designed primarily for human occupancy?	No
C	Has an oxygen concentration outside the safe oxygen range?	No
D	Has a concentration of airborne contaminant that may cause impairment, loss of consciousness or asphyxiation?	No
E	Has a concentration of flammable airborne contaminant that may cause injury from fire or explosion?	No
F	Has a risk of engulfment in a stored free flowing solid or a rising level of liquid that may cause suffocation or drowning?	No
Confined Space	If the answer to A and B and at least one of C, D, E or F is Yes, then the space is a Confined Space.	No



Date	Amendment details	Approved by



University of South Australia Confined Space Register 2012

Assessed by: AECOM Australia Pty Ltd

Date Assessed: 10/10/2012

Assessors: Daniel Alexander

Campus:	City West
Building:	BH
Space ID:	CW-BH-02
Description:	Plant Room
Location:	BH2-42

UniSA deemed: **Non-Confined Space**

UniSA deems a space Confined Space if either assessment criteria (shown below) results in Yes.

Number of Entrances:	1
Entry type:	Door / Gate
Access type:	Easy access

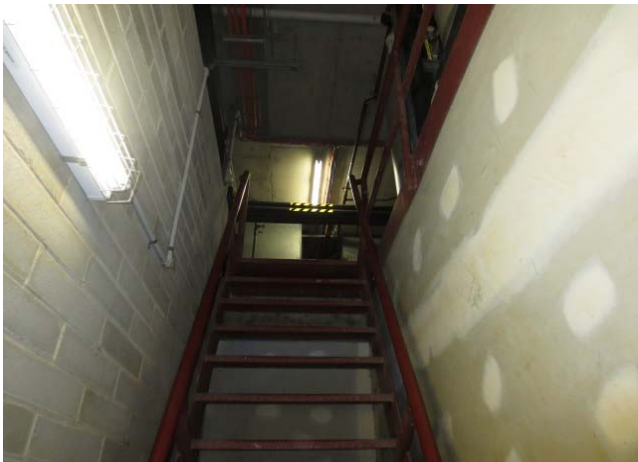
Comments:	This is a restricted space
Additional Hazards:	Head impact, Slips trips and falls, Mechanical, Constrained movement

[View on plan](#)

[Return to Register](#)

Category	Criteria: Work Health and Safety Regulations 2012 (SA)	Result
A	Is the space enclosed or partially enclosed?	Yes
B	Is not designed or intended primarily to be occupied by a person?	No
C	Is, or is designed or intended to be, at normal atmospheric pressure while any person is in the space?	Yes
D	Is or is likely to be a risk to health and safety from:	
i)	an atmosphere that does not have a safe oxygen level?	No
ii)	contaminants, including airborne gases, vapours and dusts, that may cause injury from fire or explosion?	No
iii)	harmful concentrations of any airborne contaminants?	No
iv)	engulfment?	No
Confined Space	If the answer to A and B and C and at least one of D i), ii), iii) or iv) is Yes, then the space is a Confined Space.	No

Category	Criteria: AS2865-2009	Result
A	Is the space enclosed or partially enclosed?	Yes
B	Is not intended or designed primarily for human occupancy?	No
C	Has an oxygen concentration outside the safe oxygen range?	No
D	Has a concentration of airborne contaminant that may cause impairment, loss of consciousness or asphyxiation?	No
E	Has a concentration of flammable airborne contaminant that may cause injury from fire or explosion?	No
F	Has a risk of engulfment in a stored free flowing solid or a rising level of liquid that may cause suffocation or drowning?	No
Confined Space	If the answer to A and B and at least one of C, D, E or F is Yes, then the space is a Confined Space.	No



Date	Amendment details	Approved by



University of South Australia Confined Space Register 2012

Assessed by: AECOM Australia Pty Ltd

Date Assessed: 10/10/2012

Assessors: Daniel Alexander

Campus:	City West
Building:	BH
Space ID:	CW-BH-03
Description:	Air Handling Unit x 2
Location:	BH2-42

UniSA deemed: **Non-Confined Space**

UniSA deems a space Confined Space if either assessment criteria (shown below) results in Yes.

Number of Entrances:	1
Entry type:	Side hatch
Access type:	Requires manoeuvring

Comments:	This is a restricted space
Additional Hazards:	Head impact, Cold stress, Mechanical, Constrained movement

[View on plan](#)

[Return to Register](#)

Category	Criteria: Work Health and Safety Regulations 2012 (SA)	Result
A	Is the space enclosed or partially enclosed?	Yes
B	Is not designed or intended primarily to be occupied by a person?	Yes
C	Is, or is designed or intended to be, at normal atmospheric pressure while any person is in the space?	Yes
D	Is or is likely to be a risk to health and safety from:	
i)	an atmosphere that does not have a safe oxygen level?	No
ii)	contaminants, including airborne gases, vapours and dusts, that may cause injury from fire or explosion?	No
iii)	harmful concentrations of any airborne contaminants?	No
iv)	engulfment?	No
Confined Space	If the answer to A and B and C and at least one of D i), ii), iii) or iv) is Yes, then the space is a Confined Space.	No

Category	Criteria: AS2865-2009	Result
A	Is the space enclosed or partially enclosed?	Yes
B	Is not intended or designed primarily for human occupancy?	Yes
C	Has an oxygen concentration outside the safe oxygen range?	No
D	Has a concentration of airborne contaminant that may cause impairment, loss of consciousness or asphyxiation?	No
E	Has a concentration of flammable airborne contaminant that may cause injury from fire or explosion?	No
F	Has a risk of engulfment in a stored free flowing solid or a rising level of liquid that may cause suffocation or drowning?	No
Confined Space	If the answer to A and B and at least one of C, D, E or F is Yes, then the space is a Confined Space.	No



Date	Amendment details	Approved by



University of South Australia Confined Space Register 2012

Assessed by: AECOM Australia Pty Ltd

Date Assessed: 10/10/2012

Assessors: Daniel Alexander

Campus:	City West
Building:	BH
Space ID:	CW-BH-04
Description:	Duct
Location:	BH2-42

UniSA deemed: **Non-Confined Space**

UniSA deems a space Confined Space if either assessment criteria (shown below) results in Yes.

Number of Entrances:	1
Entry type:	Side hatch
Access type:	Requires manoeuvring

Comments:	This is a restricted space
Additional Hazards:	Head impact, Entrapment, Constrained movement

[View on plan](#)

[Return to Register](#)

Category	Criteria: Work Health and Safety Regulations 2012 (SA)	Result
A	Is the space enclosed or partially enclosed?	Yes
B	Is not designed or intended primarily to be occupied by a person?	Yes
C	Is, or is designed or intended to be, at normal atmospheric pressure while any person is in the space?	Yes
D	Is or is likely to be a risk to health and safety from:	
i)	an atmosphere that does not have a safe oxygen level?	No
ii)	contaminants, including airborne gases, vapours and dusts, that may cause injury from fire or explosion?	No
iii)	harmful concentrations of any airborne contaminants?	No
iv)	engulfment?	No
Confined Space	If the answer to A and B and C and at least one of D i), ii), iii) or iv) is Yes, then the space is a Confined Space.	No

Category	Criteria: AS2865-2009	Result
A	Is the space enclosed or partially enclosed?	Yes
B	Is not intended or designed primarily for human occupancy?	Yes
C	Has an oxygen concentration outside the safe oxygen range?	No
D	Has a concentration of airborne contaminant that may cause impairment, loss of consciousness or asphyxiation?	No
E	Has a concentration of flammable airborne contaminant that may cause injury from fire or explosion?	No
F	Has a risk of engulfment in a stored free flowing solid or a rising level of liquid that may cause suffocation or drowning?	No
Confined Space	If the answer to A and B and at least one of C, D, E or F is Yes, then the space is a Confined Space.	No



Date	Amendment details	Approved by

University of South Australia Confined Space Register 2012

Assessed by: AECOM Australia Pty Ltd

Date Assessed: 10/10/2012

Assessors: Daniel Alexander

Campus:	City West
Building:	BH
Space ID:	CW-BH-05
Description:	Electrical Distribution Board
Location:	BH2-06b

UniSA deemed: **Non-Confined Space**

UniSA deems a space Confined Space if either assessment criteria (shown below) results in Yes.

Number of Entrances:	1
Entry type:	Door / Gate
Access type:	Easy access

Comments:	This is a restricted space
Additional Hazards:	Electrical

[View on plan](#)

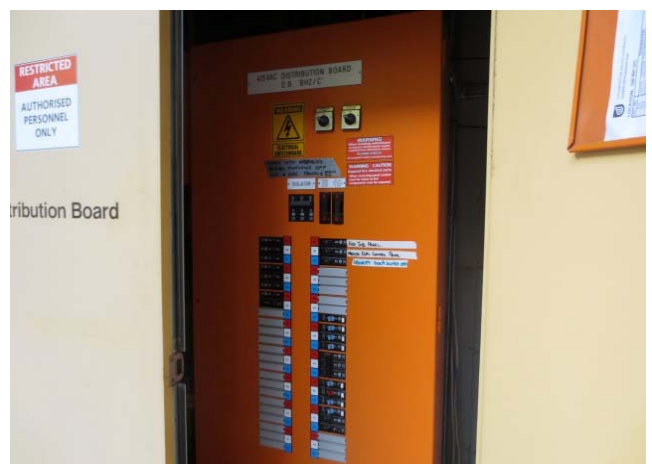
[Return to Register](#)

Category	Criteria: Work Health and Safety Regulations 2012 (SA)	Result
A	Is the space enclosed or partially enclosed?	Yes
B	Is not designed or intended primarily to be occupied by a person?	No
C	Is, or is designed or intended to be, at normal atmospheric pressure while any person is in the space?	Yes
D	Is or is likely to be a risk to health and safety from:	
i)	an atmosphere that does not have a safe oxygen level?	No
ii)	contaminants, including airborne gases, vapours and dusts, that may cause injury from fire or explosion?	No
iii)	harmful concentrations of any airborne contaminants?	No
iv)	engulfment?	No
Confined Space	If the answer to A and B and C and at least one of D i), ii), iii) or iv) is Yes, then the space is a Confined Space.	No

Category	Criteria: AS2865-2009	Result
A	Is the space enclosed or partially enclosed?	Yes
B	Is not intended or designed primarily for human occupancy?	No
C	Has an oxygen concentration outside the safe oxygen range?	No
D	Has a concentration of airborne contaminant that may cause impairment, loss of consciousness or asphyxiation?	No
E	Has a concentration of flammable airborne contaminant that may cause injury from fire or explosion?	No
F	Has a risk of engulfment in a stored free flowing solid or a rising level of liquid that may cause suffocation or drowning?	No
Confined Space	If the answer to A and B and at least one of C, D, E or F is Yes, then the space is a Confined Space.	No



Date	Amendment details	Approved by



University of South Australia Confined Space Register 2012

Assessed by: AECOM Australia Pty Ltd

Date Assessed: 10/10/2012

Assessors: Daniel Alexander

Campus:	City West
Building:	BH
Space ID:	CW-BH-06
Description:	Comms
Location:	BH2-06c

UniSA deemed: **Non-Confined Space**

UniSA deems a space Confined Space if either assessment criteria (shown below) results in Yes.

Number of Entrances:	1
Entry type:	Door / Gate
Access type:	Easy access

Comments:	This is a restricted space
Additional Hazards:	

[View on plan](#)

[Return to Register](#)

Category	Criteria: Work Health and Safety Regulations 2012 (SA)	Result
A	Is the space enclosed or partially enclosed?	Yes
B	Is not designed or intended primarily to be occupied by a person?	No
C	Is, or is designed or intended to be, at normal atmospheric pressure while any person is in the space?	Yes
D	Is or is likely to be a risk to health and safety from:	
i)	an atmosphere that does not have a safe oxygen level?	No
ii)	contaminants, including airborne gases, vapours and dusts, that may cause injury from fire or explosion?	No
iii)	harmful concentrations of any airborne contaminants?	No
iv)	engulfment?	No
Confined Space	If the answer to A and B and C and at least one of D i), ii), iii) or iv) is Yes, then the space is a Confined Space.	No

Category	Criteria: AS2865-2009	Result
A	Is the space enclosed or partially enclosed?	Yes
B	Is not intended or designed primarily for human occupancy?	No
C	Has an oxygen concentration outside the safe oxygen range?	No
D	Has a concentration of airborne contaminant that may cause impairment, loss of consciousness or asphyxiation?	No
E	Has a concentration of flammable airborne contaminant that may cause injury from fire or explosion?	No
F	Has a risk of engulfment in a stored free flowing solid or a rising level of liquid that may cause suffocation or drowning?	No
Confined Space	If the answer to A and B and at least one of C, D, E or F is Yes, then the space is a Confined Space.	No



Date	Amendment details	Approved by



University of South Australia Confined Space Register 2012

Assessed by: AECOM Australia Pty Ltd

Date Assessed: 10/10/2012

Assessors: Daniel Alexander

Campus:	City West
Building:	BH
Space ID:	CW-BH-07
Description:	Fire Indicator Panel
Location:	BH2-06d

UniSA deemed: **Non-Confined Space**

UniSA deems a space Confined Space if either assessment criteria (shown below) results in Yes.

Number of Entrances:	1
Entry type:	Door / Gate
Access type:	Easy access

Comments:	This is a restricted space
Additional Hazards:	

[View on plan](#)

[Return to Register](#)

Category	Criteria: Work Health and Safety Regulations 2012 (SA)	Result
A	Is the space enclosed or partially enclosed?	Yes
B	Is not designed or intended primarily to be occupied by a person?	No
C	Is, or is designed or intended to be, at normal atmospheric pressure while any person is in the space?	Yes
D	Is or is likely to be a risk to health and safety from:	
i)	an atmosphere that does not have a safe oxygen level?	No
ii)	contaminants, including airborne gases, vapours and dusts, that may cause injury from fire or explosion?	No
iii)	harmful concentrations of any airborne contaminants?	No
iv)	engulfment?	No
Confined Space	If the answer to A and B and C and at least one of D i), ii), iii) or iv) is Yes, then the space is a Confined Space.	No

Category	Criteria: AS2865-2009	Result
A	Is the space enclosed or partially enclosed?	Yes
B	Is not intended or designed primarily for human occupancy?	No
C	Has an oxygen concentration outside the safe oxygen range?	No
D	Has a concentration of airborne contaminant that may cause impairment, loss of consciousness or asphyxiation?	No
E	Has a concentration of flammable airborne contaminant that may cause injury from fire or explosion?	No
F	Has a risk of engulfment in a stored free flowing solid or a rising level of liquid that may cause suffocation or drowning?	No
Confined Space	If the answer to A and B and at least one of C, D, E or F is Yes, then the space is a Confined Space.	No



Date	Amendment details	Approved by



University of South Australia Confined Space Register 2012

Assessed by: AECOM Australia Pty Ltd

Date Assessed: 10/10/2012

Assessors: Daniel Alexander

Campus:	City West
Building:	BH
Space ID:	CW-BH-08
Description:	MECP
Location:	BH2-06e

UniSA deemed: **Non-Confined Space**

UniSA deems a space Confined Space if either assessment criteria (shown below) results in Yes.

Number of Entrances:	1
Entry type:	Door / Gate
Access type:	Easy access

Comments:	This is a restricted space
Additional Hazards:	

[View on plan](#)

[Return to Register](#)

Category	Criteria: Work Health and Safety Regulations 2012 (SA)	Result
A	Is the space enclosed or partially enclosed?	Yes
B	Is not designed or intended primarily to be occupied by a person?	No
C	Is, or is designed or intended to be, at normal atmospheric pressure while any person is in the space?	Yes
D	Is or is likely to be a risk to health and safety from:	
i)	an atmosphere that does not have a safe oxygen level?	No
ii)	contaminants, including airborne gases, vapours and dusts, that may cause injury from fire or explosion?	No
iii)	harmful concentrations of any airborne contaminants?	No
iv)	engulfment?	No
Confined Space	If the answer to A and B and C and at least one of D i), ii), iii) or iv) is Yes, then the space is a Confined Space.	No

Category	Criteria: AS2865-2009	Result
A	Is the space enclosed or partially enclosed?	Yes
B	Is not intended or designed primarily for human occupancy?	No
C	Has an oxygen concentration outside the safe oxygen range?	No
D	Has a concentration of airborne contaminant that may cause impairment, loss of consciousness or asphyxiation?	No
E	Has a concentration of flammable airborne contaminant that may cause injury from fire or explosion?	No
F	Has a risk of engulfment in a stored free flowing solid or a rising level of liquid that may cause suffocation or drowning?	No
Confined Space	If the answer to A and B and at least one of C, D, E or F is Yes, then the space is a Confined Space.	No



Date	Amendment details	Approved by



University of South Australia Confined Space Register 2012

Assessed by: AECOM Australia Pty Ltd

Date Assessed: 10/10/2012

Assessors: Daniel Alexander

Campus:	City West
Building:	BH
Space ID:	CW-BH-09
Description:	Plant Room
Location:	BH2-41

UniSA deemed: **Non-Confined Space**

UniSA deems a space Confined Space if either assessment criteria (shown below) results in Yes.

Number of Entrances:	1
Entry type:	Door / Gate
Access type:	Easy access

Comments:	This is a restricted space
Additional Hazards:	Head impact, Slips trips and falls, Electrical Constrained movement

[View on plan](#)

[Return to Register](#)

Category	Criteria: Work Health and Safety Regulations 2012 (SA)	Result
A	Is the space enclosed or partially enclosed?	Yes
B	Is not designed or intended primarily to be occupied by a person?	No
C	Is, or is designed or intended to be, at normal atmospheric pressure while any person is in the space?	Yes
D	Is or is likely to be a risk to health and safety from:	
i)	an atmosphere that does not have a safe oxygen level?	No
ii)	contaminants, including airborne gases, vapours and dusts, that may cause injury from fire or explosion?	No
iii)	harmful concentrations of any airborne contaminants?	No
iv)	engulfment?	No
Confined Space	If the answer to A and B and C and at least one of D i), ii), iii) or iv) is Yes, then the space is a Confined Space.	No

Category	Criteria: AS2865-2009	Result
A	Is the space enclosed or partially enclosed?	Yes
B	Is not intended or designed primarily for human occupancy?	No
C	Has an oxygen concentration outside the safe oxygen range?	No
D	Has a concentration of airborne contaminant that may cause impairment, loss of consciousness or asphyxiation?	No
E	Has a concentration of flammable airborne contaminant that may cause injury from fire or explosion?	No
F	Has a risk of engulfment in a stored free flowing solid or a rising level of liquid that may cause suffocation or drowning?	No
Confined Space	If the answer to A and B and at least one of C, D, E or F is Yes, then the space is a Confined Space.	No



Date	Amendment details	Approved by



University of South Australia Confined Space Register 2012

Assessed by: AECOM Australia Pty Ltd

Date Assessed: 10/10/2012

Assessors: Daniel Alexander

Campus:	City West
Building:	BH
Space ID:	CW-BH-10
Description:	Air Handling Unit
Location:	BH2-41

UniSA deemed: **Non-Confined Space**

UniSA deems a space Confined Space if either assessment criteria (shown below) results in Yes.

Number of Entrances:	1
Entry type:	Side hatch
Access type:	Requires manoeuvring

Comments:	This is a restricted space
Additional Hazards:	Head impact, Cold stress, Mechanical, Constrained movement

[View on plan](#)

[Return to Register](#)

Category	Criteria: Work Health and Safety Regulations 2012 (SA)	Result
A	Is the space enclosed or partially enclosed?	Yes
B	Is not designed or intended primarily to be occupied by a person?	Yes
C	Is, or is designed or intended to be, at normal atmospheric pressure while any person is in the space?	Yes
D	Is or is likely to be a risk to health and safety from:	
i)	an atmosphere that does not have a safe oxygen level?	No
ii)	contaminants, including airborne gases, vapours and dusts, that may cause injury from fire or explosion?	No
iii)	harmful concentrations of any airborne contaminants?	No
iv)	engulfment?	No
Confined Space	If the answer to A and B and C and at least one of D i), ii), iii) or iv) is Yes, then the space is a Confined Space.	No

Category	Criteria: AS2865-2009	Result
A	Is the space enclosed or partially enclosed?	Yes
B	Is not intended or designed primarily for human occupancy?	Yes
C	Has an oxygen concentration outside the safe oxygen range?	No
D	Has a concentration of airborne contaminant that may cause impairment, loss of consciousness or asphyxiation?	No
E	Has a concentration of flammable airborne contaminant that may cause injury from fire or explosion?	No
F	Has a risk of engulfment in a stored free flowing solid or a rising level of liquid that may cause suffocation or drowning?	No
Confined Space	If the answer to A and B and at least one of C, D, E or F is Yes, then the space is a Confined Space.	No



Date	Amendment details	Approved by



University of South Australia Confined Space Register 2012

Assessed by: AECOM Australia Pty Ltd

Date Assessed: 10/10/2012

Assessors: Daniel Alexander

Campus:	City West
Building:	BH
Space ID:	CW-BH-11
Description:	Plant Room
Location:	BH2-40

UniSA deemed: **Non-Confined Space**

UniSA deems a space Confined Space if either assessment criteria (shown below) results in Yes.

Number of Entrances:	1
Entry type:	Door / Gate
Access type:	Stair

Comments:	This is a restricted space
Additional Hazards:	Head impact, Slips trips and falls, Electrical Constrained movement

[View on plan](#)

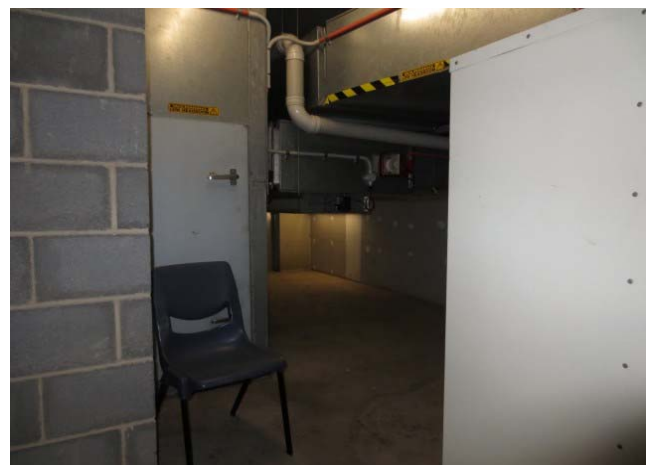
[Return to Register](#)

Category	Criteria: Work Health and Safety Regulations 2012 (SA)	Result
A	Is the space enclosed or partially enclosed?	Yes
B	Is not designed or intended primarily to be occupied by a person?	No
C	Is, or is designed or intended to be, at normal atmospheric pressure while any person is in the space?	Yes
D	Is or is likely to be a risk to health and safety from:	
i)	an atmosphere that does not have a safe oxygen level?	No
ii)	contaminants, including airborne gases, vapours and dusts, that may cause injury from fire or explosion?	No
iii)	harmful concentrations of any airborne contaminants?	No
iv)	engulfment?	No
Confined Space	If the answer to A and B and C and at least one of D i), ii), iii) or iv) is Yes, then the space is a Confined Space.	No

Category	Criteria: AS2865-2009	Result
A	Is the space enclosed or partially enclosed?	Yes
B	Is not intended or designed primarily for human occupancy?	No
C	Has an oxygen concentration outside the safe oxygen range?	No
D	Has a concentration of airborne contaminant that may cause impairment, loss of consciousness or asphyxiation?	No
E	Has a concentration of flammable airborne contaminant that may cause injury from fire or explosion?	No
F	Has a risk of engulfment in a stored free flowing solid or a rising level of liquid that may cause suffocation or drowning?	No
Confined Space	If the answer to A and B and at least one of C, D, E or F is Yes, then the space is a Confined Space.	No



Date	Amendment details	Approved by



University of South Australia Confined Space Register 2012

Assessed by: AECOM Australia Pty Ltd

Date Assessed: 10/10/2012

Assessors: Daniel Alexander

Campus:	City West
Building:	BH
Space ID:	CW-BH-12
Description:	Air Handling Unit
Location:	BH2-40

UniSA deemed: **Non-Confined Space**

UniSA deems a space Confined Space if either assessment criteria (shown below) results in Yes.

Number of Entrances:	1
Entry type:	Side hatch
Access type:	Requires manoeuvring

Comments:	This is a restricted space
Additional Hazards:	Head impact, Cold stress, Mechanical, Constrained movement

[View on plan](#)

[Return to Register](#)

Category	Criteria: Work Health and Safety Regulations 2012 (SA)	Result
A	Is the space enclosed or partially enclosed?	Yes
B	Is not designed or intended primarily to be occupied by a person?	Yes
C	Is, or is designed or intended to be, at normal atmospheric pressure while any person is in the space?	Yes
D	Is or is likely to be a risk to health and safety from:	
i)	an atmosphere that does not have a safe oxygen level?	No
ii)	contaminants, including airborne gases, vapours and dusts, that may cause injury from fire or explosion?	No
iii)	harmful concentrations of any airborne contaminants?	No
iv)	engulfment?	No
Confined Space	If the answer to A and B and C and at least one of D i), ii), iii) or iv) is Yes, then the space is a Confined Space.	No

Category	Criteria: AS2865-2009	Result
A	Is the space enclosed or partially enclosed?	Yes
B	Is not intended or designed primarily for human occupancy?	Yes
C	Has an oxygen concentration outside the safe oxygen range?	No
D	Has a concentration of airborne contaminant that may cause impairment, loss of consciousness or asphyxiation?	No
E	Has a concentration of flammable airborne contaminant that may cause injury from fire or explosion?	No
F	Has a risk of engulfment in a stored free flowing solid or a rising level of liquid that may cause suffocation or drowning?	No
Confined Space	If the answer to A and B and at least one of C, D, E or F is Yes, then the space is a Confined Space.	No



Date	Amendment details	Approved by

University of South Australia Confined Space Register 2012

Assessed by: AECOM Australia Pty Ltd

Date Assessed: 10/10/2012

Assessors: Daniel Alexander

Campus:	City West
Building:	BH
Space ID:	CW-BH-13
Description:	Duct
Location:	BH2-12b

UniSA deemed: **Non-Confined Space**

UniSA deems a space Confined Space if either assessment criteria (shown below) results in Yes.

Number of Entrances:	1
Entry type:	Door / Gate
Access type:	Easy access

Comments:	This is a restricted space
Additional Hazards:	Head impact, Entrapment, Constrained movement

[View on plan](#)

[Return to Register](#)

Category	Criteria: Work Health and Safety Regulations 2012 (SA)	Result
A	Is the space enclosed or partially enclosed?	Yes
B	Is not designed or intended primarily to be occupied by a person?	Yes
C	Is, or is designed or intended to be, at normal atmospheric pressure while any person is in the space?	Yes
D	Is or is likely to be a risk to health and safety from:	
i)	an atmosphere that does not have a safe oxygen level?	No
ii)	contaminants, including airborne gases, vapours and dusts, that may cause injury from fire or explosion?	No
iii)	harmful concentrations of any airborne contaminants?	No
iv)	engulfment?	No
Confined Space	If the answer to A and B and C and at least one of D i), ii), iii) or iv) is Yes, then the space is a Confined Space.	No

Category	Criteria: AS2865-2009	Result
A	Is the space enclosed or partially enclosed?	Yes
B	Is not intended or designed primarily for human occupancy?	Yes
C	Has an oxygen concentration outside the safe oxygen range?	No
D	Has a concentration of airborne contaminant that may cause impairment, loss of consciousness or asphyxiation?	No
E	Has a concentration of flammable airborne contaminant that may cause injury from fire or explosion?	No
F	Has a risk of engulfment in a stored free flowing solid or a rising level of liquid that may cause suffocation or drowning?	No
Confined Space	If the answer to A and B and at least one of C, D, E or F is Yes, then the space is a Confined Space.	No



Date	Amendment details	Approved by



University of South Australia Confined Space Register 2012

Assessed by: AECOM Australia Pty Ltd

Date Assessed: 10/10/2012

Assessors: Daniel Alexander

Campus:	City West
Building:	BH
Space ID:	CW-BH-14
Description:	Plant Room
Location:	BH2-17

UniSA deemed: **Non-Confined Space**

UniSA deems a space Confined Space if either assessment criteria (shown below) results in Yes.

Number of Entrances:	1
Entry type:	Door / Gate
Access type:	Easy access

Comments:	This is a restricted space
Additional Hazards:	Head impact, Slips trips and falls

[View on plan](#)

[Return to Register](#)

Category	Criteria: Work Health and Safety Regulations 2012 (SA)	Result
A	Is the space enclosed or partially enclosed?	Yes
B	Is not designed or intended primarily to be occupied by a person?	No
C	Is, or is designed or intended to be, at normal atmospheric pressure while any person is in the space?	Yes
D	Is or is likely to be a risk to health and safety from:	
i)	an atmosphere that does not have a safe oxygen level?	No
ii)	contaminants, including airborne gases, vapours and dusts, that may cause injury from fire or explosion?	No
iii)	harmful concentrations of any airborne contaminants?	No
iv)	engulfment?	No
Confined Space	If the answer to A and B and C and at least one of D i), ii), iii) or iv) is Yes, then the space is a Confined Space.	No

Category	Criteria: AS2865-2009	Result
A	Is the space enclosed or partially enclosed?	Yes
B	Is not intended or designed primarily for human occupancy?	No
C	Has an oxygen concentration outside the safe oxygen range?	No
D	Has a concentration of airborne contaminant that may cause impairment, loss of consciousness or asphyxiation?	No
E	Has a concentration of flammable airborne contaminant that may cause injury from fire or explosion?	No
F	Has a risk of engulfment in a stored free flowing solid or a rising level of liquid that may cause suffocation or drowning?	No
Confined Space	If the answer to A and B and at least one of C, D, E or F is Yes, then the space is a Confined Space.	No



Date	Amendment details	Approved by



University of South Australia Confined Space Register 2012

Assessed by: AECOM Australia Pty Ltd

Date Assessed: 10/10/2012

Assessors: Daniel Alexander

Campus:	City West
Building:	BH
Space ID:	CW-BH-15
Description:	Electrical Distribution Board
Location:	BH2-06g

UniSA deemed: **Non-Confined Space**

UniSA deems a space Confined Space if either assessment criteria (shown below) results in Yes.

Number of Entrances:	1
Entry type:	Door / Gate
Access type:	Easy access

Comments:	This is a restricted space
Additional Hazards:	Electrical

[View on plan](#)

[Return to Register](#)

Category	Criteria: Work Health and Safety Regulations 2012 (SA)	Result
A	Is the space enclosed or partially enclosed?	Yes
B	Is not designed or intended primarily to be occupied by a person?	No
C	Is, or is designed or intended to be, at normal atmospheric pressure while any person is in the space?	Yes
D	Is or is likely to be a risk to health and safety from:	
i)	an atmosphere that does not have a safe oxygen level?	No
ii)	contaminants, including airborne gases, vapours and dusts, that may cause injury from fire or explosion?	No
iii)	harmful concentrations of any airborne contaminants?	No
iv)	engulfment?	No
Confined Space	If the answer to A and B and C and at least one of D i), ii), iii) or iv) is Yes, then the space is a Confined Space.	No

Category	Criteria: AS2865-2009	Result
A	Is the space enclosed or partially enclosed?	Yes
B	Is not intended or designed primarily for human occupancy?	No
C	Has an oxygen concentration outside the safe oxygen range?	No
D	Has a concentration of airborne contaminant that may cause impairment, loss of consciousness or asphyxiation?	No
E	Has a concentration of flammable airborne contaminant that may cause injury from fire or explosion?	No
F	Has a risk of engulfment in a stored free flowing solid or a rising level of liquid that may cause suffocation or drowning?	No
Confined Space	If the answer to A and B and at least one of C, D, E or F is Yes, then the space is a Confined Space.	No



Date	Amendment details	Approved by



University of South Australia Confined Space Register 2012

Assessed by: AECOM Australia Pty Ltd

Date Assessed: 10/10/2012

Assessors: Daniel Alexander

Campus:	City West
Building:	BH
Space ID:	CW-BH-16
Description:	Comms
Location:	BH2-06h

UniSA deemed: **Non-Confined Space**

UniSA deems a space Confined Space if either assessment criteria (shown below) results in Yes.

Number of Entrances:	1
Entry type:	Door / Gate
Access type:	Easy access

Comments:	This is a restricted space
Additional Hazards:	

[View on plan](#)

[Return to Register](#)

Category	Criteria: Work Health and Safety Regulations 2012 (SA)	Result
A	Is the space enclosed or partially enclosed?	Yes
B	Is not designed or intended primarily to be occupied by a person?	No
C	Is, or is designed or intended to be, at normal atmospheric pressure while any person is in the space?	Yes
D	Is or is likely to be a risk to health and safety from:	
i)	an atmosphere that does not have a safe oxygen level?	No
ii)	contaminants, including airborne gases, vapours and dusts, that may cause injury from fire or explosion?	No
iii)	harmful concentrations of any airborne contaminants?	No
iv)	engulfment?	No
Confined Space	If the answer to A and B and C and at least one of D i), ii), iii) or iv) is Yes, then the space is a Confined Space.	No

Category	Criteria: AS2865-2009	Result
A	Is the space enclosed or partially enclosed?	Yes
B	Is not intended or designed primarily for human occupancy?	No
C	Has an oxygen concentration outside the safe oxygen range?	No
D	Has a concentration of airborne contaminant that may cause impairment, loss of consciousness or asphyxiation?	No
E	Has a concentration of flammable airborne contaminant that may cause injury from fire or explosion?	No
F	Has a risk of engulfment in a stored free flowing solid or a rising level of liquid that may cause suffocation or drowning?	No
Confined Space	If the answer to A and B and at least one of C, D, E or F is Yes, then the space is a Confined Space.	No



Date	Amendment details	Approved by



University of South Australia Confined Space Register 2012

Assessed by: AECOM Australia Pty Ltd

Date Assessed: 10/10/2012

Assessors: Daniel Alexander

Campus:	City West
Building:	BH
Space ID:	CW-BH-17
Description:	Electrical Distribution Board
Location:	BH3-05c

UniSA deemed: **Non-Confined Space**

UniSA deems a space Confined Space if either assessment criteria (shown below) results in Yes.

Number of Entrances:	1
Entry type:	Door / Gate
Access type:	Easy access

Comments:	This is a restricted space
Additional Hazards:	Electrical

[View on plan](#)

[Return to Register](#)

Category	Criteria: Work Health and Safety Regulations 2012 (SA)	Result
A	Is the space enclosed or partially enclosed?	Yes
B	Is not designed or intended primarily to be occupied by a person?	No
C	Is, or is designed or intended to be, at normal atmospheric pressure while any person is in the space?	Yes
D	Is or is likely to be a risk to health and safety from:	
i)	an atmosphere that does not have a safe oxygen level?	No
ii)	contaminants, including airborne gases, vapours and dusts, that may cause injury from fire or explosion?	No
iii)	harmful concentrations of any airborne contaminants?	No
iv)	engulfment?	No
Confined Space	If the answer to A and B and C and at least one of D i), ii), iii) or iv) is Yes, then the space is a Confined Space.	No

Category	Criteria: AS2865-2009	Result
A	Is the space enclosed or partially enclosed?	Yes
B	Is not intended or designed primarily for human occupancy?	No
C	Has an oxygen concentration outside the safe oxygen range?	No
D	Has a concentration of airborne contaminant that may cause impairment, loss of consciousness or asphyxiation?	No
E	Has a concentration of flammable airborne contaminant that may cause injury from fire or explosion?	No
F	Has a risk of engulfment in a stored free flowing solid or a rising level of liquid that may cause suffocation or drowning?	No
Confined Space	If the answer to A and B and at least one of C, D, E or F is Yes, then the space is a Confined Space.	No



Date	Amendment details	Approved by



University of South Australia Confined Space Register 2012

Assessed by: AECOM Australia Pty Ltd

Date Assessed: 10/10/2012

Assessors: Daniel Alexander

Campus:	City West
Building:	BH
Space ID:	CW-BH-18
Description:	Comms
Location:	BH3-05b

UniSA deemed: **Non-Confined Space**

UniSA deems a space Confined Space if either assessment criteria (shown below) results in Yes.

Number of Entrances:	1
Entry type:	Door / Gate
Access type:	Easy access

Comments:	This is a restricted space
Additional Hazards:	

[View on plan](#)

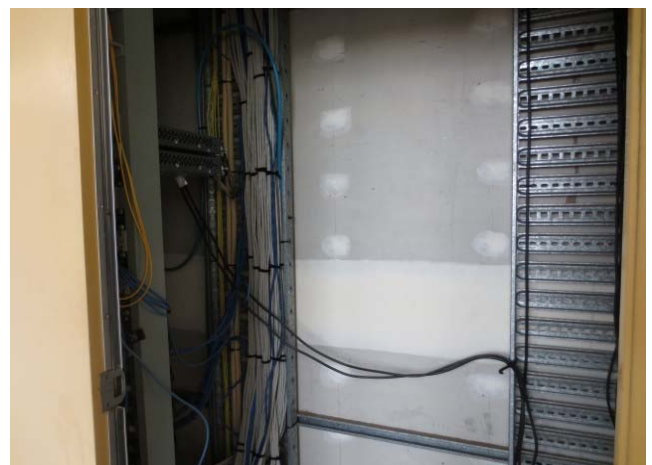
[Return to Register](#)

Category	Criteria: Work Health and Safety Regulations 2012 (SA)	Result
A	Is the space enclosed or partially enclosed?	Yes
B	Is not designed or intended primarily to be occupied by a person?	No
C	Is, or is designed or intended to be, at normal atmospheric pressure while any person is in the space?	Yes
D	Is or is likely to be a risk to health and safety from:	
i)	an atmosphere that does not have a safe oxygen level?	No
ii)	contaminants, including airborne gases, vapours and dusts, that may cause injury from fire or explosion?	No
iii)	harmful concentrations of any airborne contaminants?	No
iv)	engulfment?	No
Confined Space	If the answer to A and B and C and at least one of D i), ii), iii) or iv) is Yes, then the space is a Confined Space.	No

Category	Criteria: AS2865-2009	Result
A	Is the space enclosed or partially enclosed?	Yes
B	Is not intended or designed primarily for human occupancy?	No
C	Has an oxygen concentration outside the safe oxygen range?	No
D	Has a concentration of airborne contaminant that may cause impairment, loss of consciousness or asphyxiation?	No
E	Has a concentration of flammable airborne contaminant that may cause injury from fire or explosion?	No
F	Has a risk of engulfment in a stored free flowing solid or a rising level of liquid that may cause suffocation or drowning?	No
Confined Space	If the answer to A and B and at least one of C, D, E or F is Yes, then the space is a Confined Space.	No



Date	Amendment details	Approved by



University of South Australia Confined Space Register 2012

Assessed by: AECOM Australia Pty Ltd

Date Assessed: 10/10/2012

Assessors: Daniel Alexander

Campus:	City West
Building:	BH
Space ID:	CW-BH-19
Description:	Plant Room
Location:	BH3-24

UniSA deemed: **Non-Confined Space**

UniSA deems a space Confined Space if either assessment criteria (shown below) results in Yes.

Number of Entrances:	1
Entry type:	Door / Gate
Access type:	Easy access

Comments:	This is a restricted space
Additional Hazards:	Head impact, Slips trips and falls, Electrical

[View on plan](#)

[Return to Register](#)

Category	Criteria: Work Health and Safety Regulations 2012 (SA)	Result
A	Is the space enclosed or partially enclosed?	Yes
B	Is not designed or intended primarily to be occupied by a person?	No
C	Is, or is designed or intended to be, at normal atmospheric pressure while any person is in the space?	Yes
D	Is or is likely to be a risk to health and safety from:	
i)	an atmosphere that does not have a safe oxygen level?	No
ii)	contaminants, including airborne gases, vapours and dusts, that may cause injury from fire or explosion?	No
iii)	harmful concentrations of any airborne contaminants?	No
iv)	engulfment?	No
Confined Space	If the answer to A and B and C and at least one of D i), ii), iii) or iv) is Yes, then the space is a Confined Space.	No

Category	Criteria: AS2865-2009	Result
A	Is the space enclosed or partially enclosed?	Yes
B	Is not intended or designed primarily for human occupancy?	No
C	Has an oxygen concentration outside the safe oxygen range?	No
D	Has a concentration of airborne contaminant that may cause impairment, loss of consciousness or asphyxiation?	No
E	Has a concentration of flammable airborne contaminant that may cause injury from fire or explosion?	No
F	Has a risk of engulfment in a stored free flowing solid or a rising level of liquid that may cause suffocation or drowning?	No
Confined Space	If the answer to A and B and at least one of C, D, E or F is Yes, then the space is a Confined Space.	No



Date	Amendment details	Approved by



University of South Australia Confined Space Register 2012

Assessed by: AECOM Australia Pty Ltd

Date Assessed: 10/10/2012

Assessors: Daniel Alexander

Campus:	City West
Building:	BH
Space ID:	CW-BH-20
Description:	Air Handling Unit
Location:	BH3-24

UniSA deemed: **Non-Confined Space**

UniSA deems a space Confined Space if either assessment criteria (shown below) results in Yes.

Number of Entrances:	2
Entry type:	Side hatch
Access type:	Requires manoeuvring

Comments:	This is a restricted space
Additional Hazards:	Head impact, Cold stress, Mechanical, Constrained movement

[View on plan](#)

[Return to Register](#)

Category	Criteria: Work Health and Safety Regulations 2012 (SA)	Result
A	Is the space enclosed or partially enclosed?	Yes
B	Is not designed or intended primarily to be occupied by a person?	Yes
C	Is, or is designed or intended to be, at normal atmospheric pressure while any person is in the space?	Yes
D	Is or is likely to be a risk to health and safety from:	
i)	an atmosphere that does not have a safe oxygen level?	No
ii)	contaminants, including airborne gases, vapours and dusts, that may cause injury from fire or explosion?	No
iii)	harmful concentrations of any airborne contaminants?	No
iv)	engulfment?	No
Confined Space	If the answer to A and B and C and at least one of D i), ii), iii) or iv) is Yes, then the space is a Confined Space.	No

Category	Criteria: AS2865-2009	Result
A	Is the space enclosed or partially enclosed?	Yes
B	Is not intended or designed primarily for human occupancy?	Yes
C	Has an oxygen concentration outside the safe oxygen range?	No
D	Has a concentration of airborne contaminant that may cause impairment, loss of consciousness or asphyxiation?	No
E	Has a concentration of flammable airborne contaminant that may cause injury from fire or explosion?	No
F	Has a risk of engulfment in a stored free flowing solid or a rising level of liquid that may cause suffocation or drowning?	No
Confined Space	If the answer to A and B and at least one of C, D, E or F is Yes, then the space is a Confined Space.	No



Date	Amendment details	Approved by



University of South Australia Confined Space Register 2012

Assessed by: AECOM Australia Pty Ltd

Date Assessed: 10/10/2012

Assessors: Daniel Alexander

Campus:	City West
Building:	BH
Space ID:	CW-BH-21
Description:	Electrical Distribution Board
Location:	BH3-06j

UniSA deemed: **Non-Confined Space**

UniSA deems a space Confined Space if either assessment criteria (shown below) results in Yes.

Number of Entrances:	1
Entry type:	Door / Gate
Access type:	Easy access

Comments:	This is a restricted space
Additional Hazards:	Electrical

[View on plan](#)

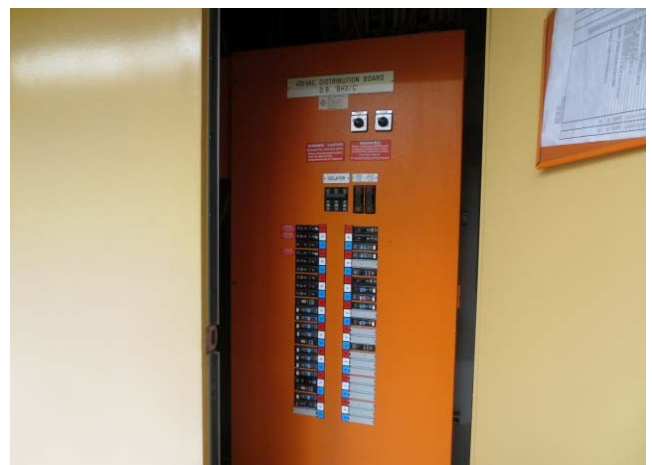
[Return to Register](#)

Category	Criteria: Work Health and Safety Regulations 2012 (SA)	Result
A	Is the space enclosed or partially enclosed?	Yes
B	Is not designed or intended primarily to be occupied by a person?	No
C	Is, or is designed or intended to be, at normal atmospheric pressure while any person is in the space?	Yes
D	Is or is likely to be a risk to health and safety from:	
i)	an atmosphere that does not have a safe oxygen level?	No
ii)	contaminants, including airborne gases, vapours and dusts, that may cause injury from fire or explosion?	No
iii)	harmful concentrations of any airborne contaminants?	No
iv)	engulfment?	No
Confined Space	If the answer to A and B and C and at least one of D i), ii), iii) or iv) is Yes, then the space is a Confined Space.	No

Category	Criteria: AS2865-2009	Result
A	Is the space enclosed or partially enclosed?	Yes
B	Is not intended or designed primarily for human occupancy?	Yes
C	Has an oxygen concentration outside the safe oxygen range?	No
D	Has a concentration of airborne contaminant that may cause impairment, loss of consciousness or asphyxiation?	No
E	Has a concentration of flammable airborne contaminant that may cause injury from fire or explosion?	No
F	Has a risk of engulfment in a stored free flowing solid or a rising level of liquid that may cause suffocation or drowning?	No
Confined Space	If the answer to A and B and at least one of C, D, E or F is Yes, then the space is a Confined Space.	No



Date	Amendment details	Approved by



University of South Australia Confined Space Register 2012

Assessed by: AECOM Australia Pty Ltd

Date Assessed: 10/10/2012

Assessors: Daniel Alexander

Campus:	City West
Building:	BH
Space ID:	CW-BH-22
Description:	Comms
Location:	BH3-06h

UniSA deemed: **Non-Confined Space**

UniSA deems a space Confined Space if either assessment criteria (shown below) results in Yes.

Number of Entrances:	1
Entry type:	Door / Gate
Access type:	Easy access

Comments:	This is a restricted space
Additional Hazards:	

[View on plan](#)

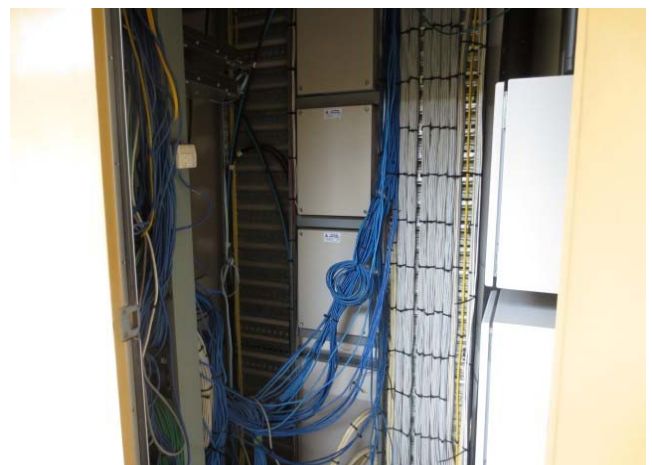
[Return to Register](#)

Category	Criteria: Work Health and Safety Regulations 2012 (SA)	Result
A	Is the space enclosed or partially enclosed?	Yes
B	Is not designed or intended primarily to be occupied by a person?	No
C	Is, or is designed or intended to be, at normal atmospheric pressure while any person is in the space?	Yes
D	Is or is likely to be a risk to health and safety from:	
i)	an atmosphere that does not have a safe oxygen level?	No
ii)	contaminants, including airborne gases, vapours and dusts, that may cause injury from fire or explosion?	No
iii)	harmful concentrations of any airborne contaminants?	No
iv)	engulfment?	No
Confined Space	If the answer to A and B and C and at least one of D i), ii), iii) or iv) is Yes, then the space is a Confined Space.	No

Category	Criteria: AS2865-2009	Result
A	Is the space enclosed or partially enclosed?	Yes
B	Is not intended or designed primarily for human occupancy?	No
C	Has an oxygen concentration outside the safe oxygen range?	No
D	Has a concentration of airborne contaminant that may cause impairment, loss of consciousness or asphyxiation?	No
E	Has a concentration of flammable airborne contaminant that may cause injury from fire or explosion?	No
F	Has a risk of engulfment in a stored free flowing solid or a rising level of liquid that may cause suffocation or drowning?	No
Confined Space	If the answer to A and B and at least one of C, D, E or F is Yes, then the space is a Confined Space.	No



Date	Amendment details	Approved by



University of South Australia Confined Space Register 2012

Assessed by: AECOM Australia Pty Ltd

Date Assessed: 10/10/2012

Assessors: Daniel Alexander

Campus:	City West
Building:	BH
Space ID:	CW-BH-23
Description:	Hydraulic Riser
Location:	BH3-16a

UniSA deemed: **Non-Confined Space**

UniSA deems a space Confined Space if either assessment criteria (shown below) results in Yes.

Number of Entrances:	1
Entry type:	Door / Gate
Access type:	Easy access

Comments:	This is a restricted space
Additional Hazards:	

[View on plan](#)

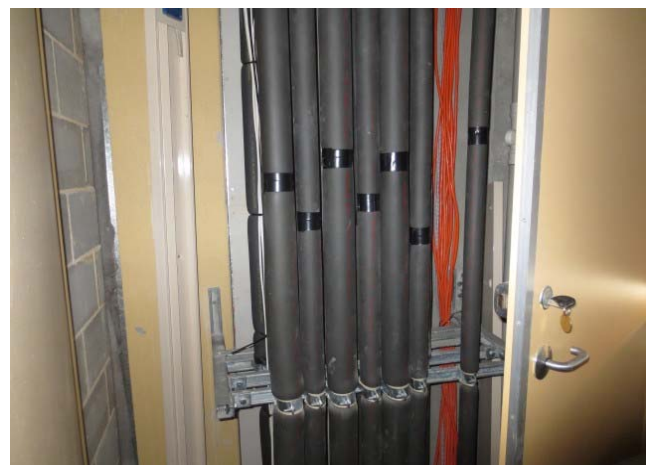
[Return to Register](#)

Category	Criteria: Work Health and Safety Regulations 2012 (SA)	Result
A	Is the space enclosed or partially enclosed?	Yes
B	Is not designed or intended primarily to be occupied by a person?	No
C	Is, or is designed or intended to be, at normal atmospheric pressure while any person is in the space?	Yes
D	Is or is likely to be a risk to health and safety from:	
i)	an atmosphere that does not have a safe oxygen level?	No
ii)	contaminants, including airborne gases, vapours and dusts, that may cause injury from fire or explosion?	No
iii)	harmful concentrations of any airborne contaminants?	No
iv)	engulfment?	No
Confined Space	If the answer to A and B and C and at least one of D i), ii), iii) or iv) is Yes, then the space is a Confined Space.	No

Category	Criteria: AS2865-2009	Result
A	Is the space enclosed or partially enclosed?	Yes
B	Is not intended or designed primarily for human occupancy?	No
C	Has an oxygen concentration outside the safe oxygen range?	No
D	Has a concentration of airborne contaminant that may cause impairment, loss of consciousness or asphyxiation?	No
E	Has a concentration of flammable airborne contaminant that may cause injury from fire or explosion?	No
F	Has a risk of engulfment in a stored free flowing solid or a rising level of liquid that may cause suffocation or drowning?	No
Confined Space	If the answer to A and B and at least one of C, D, E or F is Yes, then the space is a Confined Space.	No



Date	Amendment details	Approved by



University of South Australia Confined Space Register 2012

Assessed by: AECOM Australia Pty Ltd

Date Assessed: 10/10/2012

Assessors: Daniel Alexander

Campus:	City West
Building:	BH
Space ID:	CW-BH-24
Description:	Plant Room
Location:	BH3-15

UniSA deemed: **Non-Confined Space**

UniSA deems a space Confined Space if either assessment criteria (shown below) results in Yes.

Number of Entrances:	1
Entry type:	Door / Gate
Access type:	Easy access

Comments:	This is a restricted space
Additional Hazards:	Head impact, Electrical

[View on plan](#)

[Return to Register](#)

Category	Criteria: Work Health and Safety Regulations 2012 (SA)	Result
A	Is the space enclosed or partially enclosed?	Yes
B	Is not designed or intended primarily to be occupied by a person?	No
C	Is, or is designed or intended to be, at normal atmospheric pressure while any person is in the space?	Yes
D	Is or is likely to be a risk to health and safety from:	
i)	an atmosphere that does not have a safe oxygen level?	No
ii)	contaminants, including airborne gases, vapours and dusts, that may cause injury from fire or explosion?	No
iii)	harmful concentrations of any airborne contaminants?	No
iv)	engulfment?	No
Confined Space	If the answer to A and B and C and at least one of D i), ii), iii) or iv) is Yes, then the space is a Confined Space.	No

Category	Criteria: AS2865-2009	Result
A	Is the space enclosed or partially enclosed?	Yes
B	Is not intended or designed primarily for human occupancy?	No
C	Has an oxygen concentration outside the safe oxygen range?	No
D	Has a concentration of airborne contaminant that may cause impairment, loss of consciousness or asphyxiation?	No
E	Has a concentration of flammable airborne contaminant that may cause injury from fire or explosion?	No
F	Has a risk of engulfment in a stored free flowing solid or a rising level of liquid that may cause suffocation or drowning?	No
Confined Space	If the answer to A and B and at least one of C, D, E or F is Yes, then the space is a Confined Space.	No



Date	Amendment details	Approved by



University of South Australia Confined Space Register 2012

Assessed by: AECOM Australia Pty Ltd

Date Assessed: 10/10/2012

Assessors: Daniel Alexander

Campus:	City West
Building:	BH
Space ID:	CW-BH-25
Description:	Air Handling Unit
Location:	BH3-15

UniSA deemed: **Non-Confined Space**

UniSA deems a space Confined Space if either assessment criteria (shown below) results in Yes.

Number of Entrances:	1
Entry type:	Side hatch
Access type:	Requires manoeuvring

Comments:	This is a restricted space
Additional Hazards:	Head impact, Cold stress, Mechanical, Constrained movement

[View on plan](#)

[Return to Register](#)

Category	Criteria: Work Health and Safety Regulations 2012 (SA)	Result
A	Is the space enclosed or partially enclosed?	Yes
B	Is not designed or intended primarily to be occupied by a person?	Yes
C	Is, or is designed or intended to be, at normal atmospheric pressure while any person is in the space?	Yes
D	Is or is likely to be a risk to health and safety from:	
i)	an atmosphere that does not have a safe oxygen level?	No
ii)	contaminants, including airborne gases, vapours and dusts, that may cause injury from fire or explosion?	No
iii)	harmful concentrations of any airborne contaminants?	No
iv)	engulfment?	No
Confined Space	If the answer to A and B and C and at least one of D i), ii), iii) or iv) is Yes, then the space is a Confined Space.	No

Category	Criteria: AS2865-2009	Result
A	Is the space enclosed or partially enclosed?	Yes
B	Is not intended or designed primarily for human occupancy?	Yes
C	Has an oxygen concentration outside the safe oxygen range?	No
D	Has a concentration of airborne contaminant that may cause impairment, loss of consciousness or asphyxiation?	No
E	Has a concentration of flammable airborne contaminant that may cause injury from fire or explosion?	No
F	Has a risk of engulfment in a stored free flowing solid or a rising level of liquid that may cause suffocation or drowning?	No
Confined Space	If the answer to A and B and at least one of C, D, E or F is Yes, then the space is a Confined Space.	No



Date	Amendment details	Approved by



University of South Australia Confined Space Register 2012

Assessed by: AECOM Australia Pty Ltd

Date Assessed: 10/10/2012

Assessors: Daniel Alexander

Campus:	City West
Building:	BH
Space ID:	CW-BH-26
Description:	Comms
Location:	BH3-06b

UniSA deemed: **Non-Confined Space**

UniSA deems a space Confined Space if either assessment criteria (shown below) results in Yes.

Number of Entrances:	1
Entry type:	Door / Gate
Access type:	Easy access

Comments:	This is a restricted space
Additional Hazards:	

[View on plan](#)

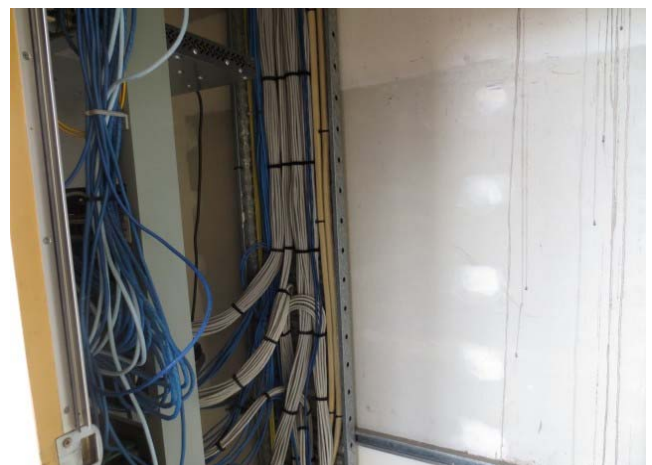
[Return to Register](#)

Category	Criteria: Work Health and Safety Regulations 2012 (SA)	Result
A	Is the space enclosed or partially enclosed?	Yes
B	Is not designed or intended primarily to be occupied by a person?	No
C	Is, or is designed or intended to be, at normal atmospheric pressure while any person is in the space?	Yes
D	Is or is likely to be a risk to health and safety from:	
i)	an atmosphere that does not have a safe oxygen level?	No
ii)	contaminants, including airborne gases, vapours and dusts, that may cause injury from fire or explosion?	No
iii)	harmful concentrations of any airborne contaminants?	No
iv)	engulfment?	No
Confined Space	If the answer to A and B and C and at least one of D i), ii), iii) or iv) is Yes, then the space is a Confined Space.	No

Category	Criteria: AS2865-2009	Result
A	Is the space enclosed or partially enclosed?	Yes
B	Is not intended or designed primarily for human occupancy?	No
C	Has an oxygen concentration outside the safe oxygen range?	No
D	Has a concentration of airborne contaminant that may cause impairment, loss of consciousness or asphyxiation?	No
E	Has a concentration of flammable airborne contaminant that may cause injury from fire or explosion?	No
F	Has a risk of engulfment in a stored free flowing solid or a rising level of liquid that may cause suffocation or drowning?	No
Confined Space	If the answer to A and B and at least one of C, D, E or F is Yes, then the space is a Confined Space.	No



Date	Amendment details	Approved by



University of South Australia Confined Space Register 2012

Assessed by: AECOM Australia Pty Ltd

Date Assessed: 10/10/2012

Assessors: Daniel Alexander

Campus:	City West
Building:	BH
Space ID:	CW-BH-27
Description:	Electrical Distribution Board
Location:	BH3-06a

UniSA deemed: **Non-Confined Space**

UniSA deems a space Confined Space if either assessment criteria (shown below) results in Yes.

Number of Entrances:	1
Entry type:	Door / Gate
Access type:	Easy access

Comments:	This is a restricted space
Additional Hazards:	Electrical

[View on plan](#)

[Return to Register](#)

Category	Criteria: Work Health and Safety Regulations 2012 (SA)	Result
A	Is the space enclosed or partially enclosed?	Yes
B	Is not designed or intended primarily to be occupied by a person?	No
C	Is, or is designed or intended to be, at normal atmospheric pressure while any person is in the space?	Yes
D	Is or is likely to be a risk to health and safety from:	
i)	an atmosphere that does not have a safe oxygen level?	No
ii)	contaminants, including airborne gases, vapours and dusts, that may cause injury from fire or explosion?	No
iii)	harmful concentrations of any airborne contaminants?	No
iv)	engulfment?	No
Confined Space	If the answer to A and B and C and at least one of D i), ii), iii) or iv) is Yes, then the space is a Confined Space.	No

Category	Criteria: AS2865-2009	Result
A	Is the space enclosed or partially enclosed?	Yes
B	Is not intended or designed primarily for human occupancy?	No
C	Has an oxygen concentration outside the safe oxygen range?	No
D	Has a concentration of airborne contaminant that may cause impairment, loss of consciousness or asphyxiation?	No
E	Has a concentration of flammable airborne contaminant that may cause injury from fire or explosion?	No
F	Has a risk of engulfment in a stored free flowing solid or a rising level of liquid that may cause suffocation or drowning?	No
Confined Space	If the answer to A and B and at least one of C, D, E or F is Yes, then the space is a Confined Space.	No



Date	Amendment details	Approved by



University of South Australia Confined Space Register 2012

Assessed by: AECOM Australia Pty Ltd

Date Assessed: 10/10/2012

Assessors: Daniel Alexander

Campus:	City West
Building:	BH
Space ID:	CW-BH-28
Description:	Plant Room
Location:	BH3-08

UniSA deemed: **Non-Confined Space**

UniSA deems a space Confined Space if either assessment criteria (shown below) results in Yes.

Number of Entrances:	1
Entry type:	Door / Gate
Access type:	Easy access

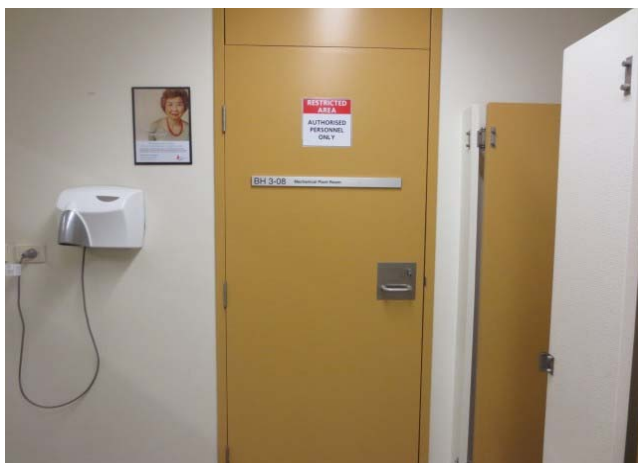
Comments:	This is a restricted space
Additional Hazards:	Head impact, Slips trips and falls, Constrained movement

[View on plan](#)

[Return to Register](#)

Category	Criteria: Work Health and Safety Regulations 2012 (SA)	Result
A	Is the space enclosed or partially enclosed?	Yes
B	Is not designed or intended primarily to be occupied by a person?	No
C	Is, or is designed or intended to be, at normal atmospheric pressure while any person is in the space?	Yes
D	Is or is likely to be a risk to health and safety from:	
i)	an atmosphere that does not have a safe oxygen level?	No
ii)	contaminants, including airborne gases, vapours and dusts, that may cause injury from fire or explosion?	No
iii)	harmful concentrations of any airborne contaminants?	No
iv)	engulfment?	No
Confined Space	If the answer to A and B and C and at least one of D i), ii), iii) or iv) is Yes, then the space is a Confined Space.	No

Category	Criteria: AS2865-2009	Result
A	Is the space enclosed or partially enclosed?	Yes
B	Is not intended or designed primarily for human occupancy?	No
C	Has an oxygen concentration outside the safe oxygen range?	No
D	Has a concentration of airborne contaminant that may cause impairment, loss of consciousness or asphyxiation?	No
E	Has a concentration of flammable airborne contaminant that may cause injury from fire or explosion?	No
F	Has a risk of engulfment in a stored free flowing solid or a rising level of liquid that may cause suffocation or drowning?	No
Confined Space	If the answer to A and B and at least one of C, D, E or F is Yes, then the space is a Confined Space.	No



Date	Amendment details	Approved by



University of South Australia Confined Space Register 2012

Assessed by: AECOM Australia Pty Ltd

Date Assessed: 10/10/2012

Assessors: Daniel Alexander

Campus:	City West
Building:	BH
Space ID:	CW-BH-29
Description:	Electrical Distribution Board
Location:	BH4-06a

UniSA deemed: **Non-Confined Space**

UniSA deems a space Confined Space if either assessment criteria (shown below) results in Yes.

Number of Entrances:	1
Entry type:	Door / Gate
Access type:	Easy access

Comments:	This is a restricted space
Additional Hazards:	Electrical

[View on plan](#)

[Return to Register](#)

Category	Criteria: Work Health and Safety Regulations 2012 (SA)	Result
A	Is the space enclosed or partially enclosed?	Yes
B	Is not designed or intended primarily to be occupied by a person?	No
C	Is, or is designed or intended to be, at normal atmospheric pressure while any person is in the space?	Yes
D	Is or is likely to be a risk to health and safety from:	
i)	an atmosphere that does not have a safe oxygen level?	No
ii)	contaminants, including airborne gases, vapours and dusts, that may cause injury from fire or explosion?	No
iii)	harmful concentrations of any airborne contaminants?	No
iv)	engulfment?	No
Confined Space	If the answer to A and B and C and at least one of D i), ii), iii) or iv) is Yes, then the space is a Confined Space.	No

Category	Criteria: AS2865-2009	Result
A	Is the space enclosed or partially enclosed?	Yes
B	Is not intended or designed primarily for human occupancy?	No
C	Has an oxygen concentration outside the safe oxygen range?	No
D	Has a concentration of airborne contaminant that may cause impairment, loss of consciousness or asphyxiation?	No
E	Has a concentration of flammable airborne contaminant that may cause injury from fire or explosion?	No
F	Has a risk of engulfment in a stored free flowing solid or a rising level of liquid that may cause suffocation or drowning?	No
Confined Space	If the answer to A and B and at least one of C, D, E or F is Yes, then the space is a Confined Space.	No



Date	Amendment details	Approved by



University of South Australia Confined Space Register 2012

Assessed by: AECOM Australia Pty Ltd

Date Assessed: 10/10/2012

Assessors: Daniel Alexander

Campus:	City West
Building:	BH
Space ID:	CW-BH-30
Description:	Comms
Location:	BH4-06b

UniSA deemed: **Non-Confined Space**

UniSA deems a space Confined Space if either assessment criteria (shown below) results in Yes.

Number of Entrances:	1
Entry type:	Door / Gate
Access type:	Easy access

Comments:	This is a restricted space
Additional Hazards:	

[View on plan](#)

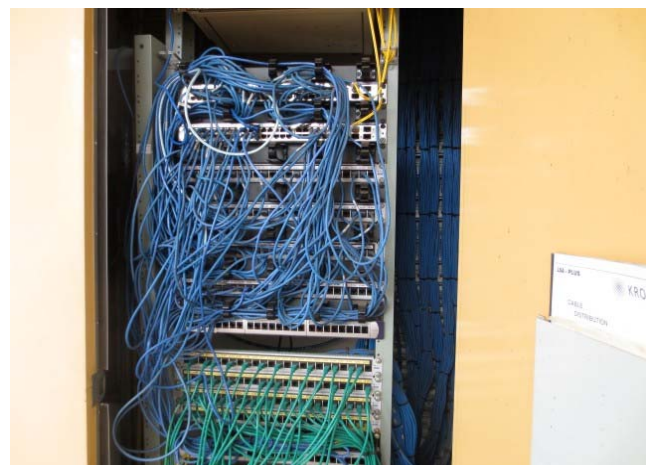
[Return to Register](#)

Category	Criteria: Work Health and Safety Regulations 2012 (SA)	Result
A	Is the space enclosed or partially enclosed?	Yes
B	Is not designed or intended primarily to be occupied by a person?	No
C	Is, or is designed or intended to be, at normal atmospheric pressure while any person is in the space?	Yes
D	Is or is likely to be a risk to health and safety from:	
i)	an atmosphere that does not have a safe oxygen level?	No
ii)	contaminants, including airborne gases, vapours and dusts, that may cause injury from fire or explosion?	No
iii)	harmful concentrations of any airborne contaminants?	No
iv)	engulfment?	No
Confined Space	If the answer to A and B and C and at least one of D i), ii), iii) or iv) is Yes, then the space is a Confined Space.	No

Category	Criteria: AS2865-2009	Result
A	Is the space enclosed or partially enclosed?	Yes
B	Is not intended or designed primarily for human occupancy?	No
C	Has an oxygen concentration outside the safe oxygen range?	No
D	Has a concentration of airborne contaminant that may cause impairment, loss of consciousness or asphyxiation?	No
E	Has a concentration of flammable airborne contaminant that may cause injury from fire or explosion?	No
F	Has a risk of engulfment in a stored free flowing solid or a rising level of liquid that may cause suffocation or drowning?	No
Confined Space	If the answer to A and B and at least one of C, D, E or F is Yes, then the space is a Confined Space.	No



Date	Amendment details	Approved by



University of South Australia Confined Space Register 2012

Assessed by: AECOM Australia Pty Ltd

Date Assessed: 10/10/2012

Assessors: Daniel Alexander

Campus:	City West
Building:	BH
Space ID:	CW-BH-31
Description:	Server
Location:	BH4-10

UniSA deemed: **Non-Confined Space**

UniSA deems a space Confined Space if either assessment criteria (shown below) results in Yes.

Number of Entrances:	1
Entry type:	Door / Gate
Access type:	Easy access

Comments:	This is a restricted space
Additional Hazards:	

[View on plan](#)

[Return to Register](#)

Category	Criteria: Work Health and Safety Regulations 2012 (SA)	Result
A	Is the space enclosed or partially enclosed?	Yes
B	Is not designed or intended primarily to be occupied by a person?	No
C	Is, or is designed or intended to be, at normal atmospheric pressure while any person is in the space?	Yes
D	Is or is likely to be a risk to health and safety from:	
i)	an atmosphere that does not have a safe oxygen level?	No
ii)	contaminants, including airborne gases, vapours and dusts, that may cause injury from fire or explosion?	No
iii)	harmful concentrations of any airborne contaminants?	No
iv)	engulfment?	No
Confined Space	If the answer to A and B and C and at least one of D i), ii), iii) or iv) is Yes, then the space is a Confined Space.	No

Category	Criteria: AS2865-2009	Result
A	Is the space enclosed or partially enclosed?	Yes
B	Is not intended or designed primarily for human occupancy?	No
C	Has an oxygen concentration outside the safe oxygen range?	No
D	Has a concentration of airborne contaminant that may cause impairment, loss of consciousness or asphyxiation?	No
E	Has a concentration of flammable airborne contaminant that may cause injury from fire or explosion?	No
F	Has a risk of engulfment in a stored free flowing solid or a rising level of liquid that may cause suffocation or drowning?	No
Confined Space	If the answer to A and B and at least one of C, D, E or F is Yes, then the space is a Confined Space.	No



Date	Amendment details	Approved by



University of South Australia Confined Space Register 2012

Assessed by: AECOM Australia Pty Ltd

Date Assessed: 10/10/2012

Assessors: Daniel Alexander

Campus:	City West
Building:	BH
Space ID:	CW-BH-32
Description:	Comms
Location:	BH4-25b

UniSA deemed: **Non-Confined Space**

UniSA deems a space Confined Space if either assessment criteria (shown below) results in Yes.

Number of Entrances:	1
Entry type:	Door / Gate
Access type:	Easy access

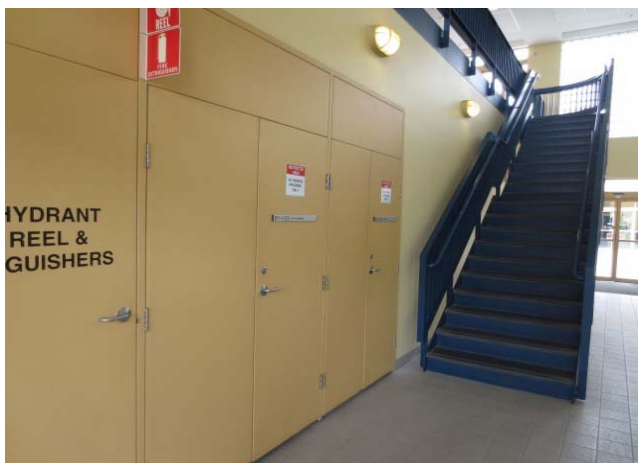
Comments:	This is a restricted space
Additional Hazards:	

[View on plan](#)

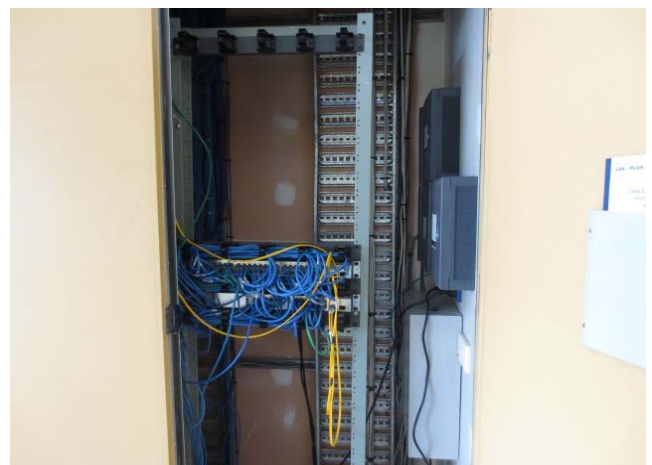
[Return to Register](#)

Category	Criteria: Work Health and Safety Regulations 2012 (SA)	Result
A	Is the space enclosed or partially enclosed?	Yes
B	Is not designed or intended primarily to be occupied by a person?	No
C	Is, or is designed or intended to be, at normal atmospheric pressure while any person is in the space?	Yes
D	Is or is likely to be a risk to health and safety from:	
i)	an atmosphere that does not have a safe oxygen level?	No
ii)	contaminants, including airborne gases, vapours and dusts, that may cause injury from fire or explosion?	No
iii)	harmful concentrations of any airborne contaminants?	No
iv)	engulfment?	No
Confined Space	If the answer to A and B and C and at least one of D i), ii), iii) or iv) is Yes, then the space is a Confined Space.	No

Category	Criteria: AS2865-2009	Result
A	Is the space enclosed or partially enclosed?	Yes
B	Is not intended or designed primarily for human occupancy?	No
C	Has an oxygen concentration outside the safe oxygen range?	No
D	Has a concentration of airborne contaminant that may cause impairment, loss of consciousness or asphyxiation?	No
E	Has a concentration of flammable airborne contaminant that may cause injury from fire or explosion?	No
F	Has a risk of engulfment in a stored free flowing solid or a rising level of liquid that may cause suffocation or drowning?	No
Confined Space	If the answer to A and B and at least one of C, D, E or F is Yes, then the space is a Confined Space.	No



Date	Amendment details	Approved by



University of South Australia Confined Space Register 2012

Assessed by: AECOM Australia Pty Ltd

Date Assessed: 10/10/2012

Assessors: Daniel Alexander

Campus:	City West
Building:	BH
Space ID:	CW-BH-33
Description:	Electrical Distribution Board
Location:	BH4-25c

UniSA deemed: **Non-Confined Space**

UniSA deems a space Confined Space if either assessment criteria (shown below) results in Yes.

Number of Entrances:	1
Entry type:	Door / Gate
Access type:	Easy access

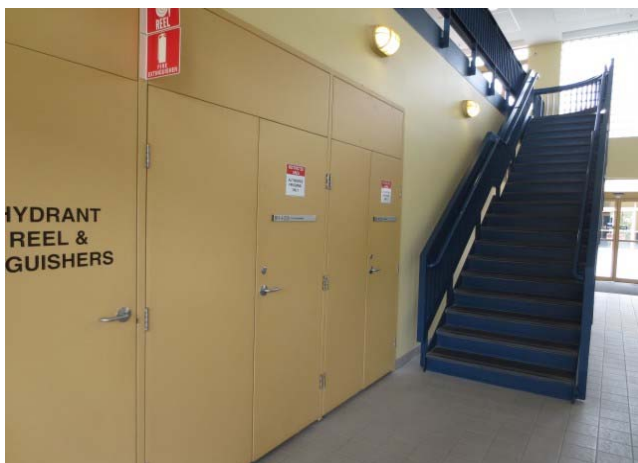
Comments:	This is a restricted space
Additional Hazards:	Electrical

[View on plan](#)

[Return to Register](#)

Category	Criteria: Work Health and Safety Regulations 2012 (SA)	Result
A	Is the space enclosed or partially enclosed?	Yes
B	Is not designed or intended primarily to be occupied by a person?	No
C	Is, or is designed or intended to be, at normal atmospheric pressure while any person is in the space?	Yes
D	Is or is likely to be a risk to health and safety from:	
i)	an atmosphere that does not have a safe oxygen level?	No
ii)	contaminants, including airborne gases, vapours and dusts, that may cause injury from fire or explosion?	No
iii)	harmful concentrations of any airborne contaminants?	No
iv)	engulfment?	No
Confined Space	If the answer to A and B and C and at least one of D i), ii), iii) or iv) is Yes, then the space is a Confined Space.	No

Category	Criteria: AS2865-2009	Result
A	Is the space enclosed or partially enclosed?	Yes
B	Is not intended or designed primarily for human occupancy?	No
C	Has an oxygen concentration outside the safe oxygen range?	No
D	Has a concentration of airborne contaminant that may cause impairment, loss of consciousness or asphyxiation?	No
E	Has a concentration of flammable airborne contaminant that may cause injury from fire or explosion?	No
F	Has a risk of engulfment in a stored free flowing solid or a rising level of liquid that may cause suffocation or drowning?	No
Confined Space	If the answer to A and B and at least one of C, D, E or F is Yes, then the space is a Confined Space.	No



Date	Amendment details	Approved by



University of South Australia Confined Space Register 2012

Assessed by: AECOM Australia Pty Ltd

Date Assessed: 10/10/2012

Assessors: Daniel Alexander

Campus:	City West
Building:	BH
Space ID:	CW-BH-34
Description:	Electrical Distribution Board
Location:	BH4-05c

UniSA deemed: **Non-Confined Space**

UniSA deems a space Confined Space if either assessment criteria (shown below) results in Yes.

Number of Entrances:	1
Entry type:	Door / Gate
Access type:	Easy access

Comments:	This is a restricted space
Additional Hazards:	Electrical

[View on plan](#)

[Return to Register](#)

Category	Criteria: Work Health and Safety Regulations 2012 (SA)	Result
A	Is the space enclosed or partially enclosed?	Yes
B	Is not designed or intended primarily to be occupied by a person?	No
C	Is, or is designed or intended to be, at normal atmospheric pressure while any person is in the space?	Yes
D	Is or is likely to be a risk to health and safety from:	
i)	an atmosphere that does not have a safe oxygen level?	No
ii)	contaminants, including airborne gases, vapours and dusts, that may cause injury from fire or explosion?	No
iii)	harmful concentrations of any airborne contaminants?	No
iv)	engulfment?	No
Confined Space	If the answer to A and B and C and at least one of D i), ii), iii) or iv) is Yes, then the space is a Confined Space.	No

Category	Criteria: AS2865-2009	Result
A	Is the space enclosed or partially enclosed?	Yes
B	Is not intended or designed primarily for human occupancy?	No
C	Has an oxygen concentration outside the safe oxygen range?	No
D	Has a concentration of airborne contaminant that may cause impairment, loss of consciousness or asphyxiation?	No
E	Has a concentration of flammable airborne contaminant that may cause injury from fire or explosion?	No
F	Has a risk of engulfment in a stored free flowing solid or a rising level of liquid that may cause suffocation or drowning?	No
Confined Space	If the answer to A and B and at least one of C, D, E or F is Yes, then the space is a Confined Space.	No



Date	Amendment details	Approved by



University of South Australia Confined Space Register 2012

Assessed by: AECOM Australia Pty Ltd

Date Assessed: 10/10/2012

Assessors: Daniel Alexander

Campus:	City West
Building:	BH
Space ID:	CW-BH-35
Description:	Comms
Location:	BH4-05b

UniSA deemed: **Non-Confined Space**

UniSA deems a space Confined Space if either assessment criteria (shown below) results in Yes.

Number of Entrances:	1
Entry type:	Door / Gate
Access type:	Easy access

Comments:	This is a restricted space
Additional Hazards:	

[View on plan](#)

[Return to Register](#)

Category	Criteria: Work Health and Safety Regulations 2012 (SA)	Result
A	Is the space enclosed or partially enclosed?	Yes
B	Is not designed or intended primarily to be occupied by a person?	No
C	Is, or is designed or intended to be, at normal atmospheric pressure while any person is in the space?	Yes
D	Is or is likely to be a risk to health and safety from:	
i)	an atmosphere that does not have a safe oxygen level?	No
ii)	contaminants, including airborne gases, vapours and dusts, that may cause injury from fire or explosion?	No
iii)	harmful concentrations of any airborne contaminants?	No
iv)	engulfment?	No
Confined Space	If the answer to A and B and C and at least one of D i), ii), iii) or iv) is Yes, then the space is a Confined Space.	No

Category	Criteria: AS2865-2009	Result
A	Is the space enclosed or partially enclosed?	Yes
B	Is not intended or designed primarily for human occupancy?	No
C	Has an oxygen concentration outside the safe oxygen range?	No
D	Has a concentration of airborne contaminant that may cause impairment, loss of consciousness or asphyxiation?	No
E	Has a concentration of flammable airborne contaminant that may cause injury from fire or explosion?	No
F	Has a risk of engulfment in a stored free flowing solid or a rising level of liquid that may cause suffocation or drowning?	No
Confined Space	If the answer to A and B and at least one of C, D, E or F is Yes, then the space is a Confined Space.	No



Date	Amendment details	Approved by



University of South Australia Confined Space Register 2012

Assessed by: AECOM Australia Pty Ltd

Date Assessed: 10/10/2012

Assessors: Daniel Alexander

Campus:	City West
Building:	BH
Space ID:	CW-BH-36
Description:	Plant Room
Location:	BH4-34

UniSA deemed: **Non-Confined Space**

UniSA deems a space Confined Space if either assessment criteria (shown below) results in Yes.

Number of Entrances:	1
Entry type:	Door / Gate
Access type:	Easy access

Comments:	This is a restricted space
Additional Hazards:	Slips trips and falls, Electrical, Constrained Movement

[View on plan](#)

[Return to Register](#)

Category	Criteria: Work Health and Safety Regulations 2012 (SA)	Result
A	Is the space enclosed or partially enclosed?	Yes
B	Is not designed or intended primarily to be occupied by a person?	No
C	Is, or is designed or intended to be, at normal atmospheric pressure while any person is in the space?	Yes
D	Is or is likely to be a risk to health and safety from:	
i)	an atmosphere that does not have a safe oxygen level?	No
ii)	contaminants, including airborne gases, vapours and dusts, that may cause injury from fire or explosion?	No
iii)	harmful concentrations of any airborne contaminants?	No
iv)	engulfment?	No
Confined Space	If the answer to A and B and C and at least one of D i), ii), iii) or iv) is Yes, then the space is a Confined Space.	No

Category	Criteria: AS2865-2009	Result
A	Is the space enclosed or partially enclosed?	Yes
B	Is not intended or designed primarily for human occupancy?	No
C	Has an oxygen concentration outside the safe oxygen range?	No
D	Has a concentration of airborne contaminant that may cause impairment, loss of consciousness or asphyxiation?	No
E	Has a concentration of flammable airborne contaminant that may cause injury from fire or explosion?	No
F	Has a risk of engulfment in a stored free flowing solid or a rising level of liquid that may cause suffocation or drowning?	No
Confined Space	If the answer to A and B and at least one of C, D, E or F is Yes, then the space is a Confined Space.	No



Date	Amendment details	Approved by



University of South Australia Confined Space Register 2012

Assessed by: AECOM Australia Pty Ltd

Date Assessed: 10/10/2012

Assessors: Daniel Alexander

Campus:	City West
Building:	BH
Space ID:	CW-BH-37
Description:	Air Handling Unit
Location:	BH4-34

UniSA deemed: **Non-Confined Space**

UniSA deems a space Confined Space if either assessment criteria (shown below) results in Yes.

Number of Entrances:	2
Entry type:	Side hatch
Access type:	Requires manoeuvring

Comments:	This is a restricted space
Additional Hazards:	Head impact, Cold stress, Mechanical, Constrained movement

[View on plan](#)

[Return to Register](#)

Category	Criteria: Work Health and Safety Regulations 2012 (SA)	Result
A	Is the space enclosed or partially enclosed?	Yes
B	Is not designed or intended primarily to be occupied by a person?	Yes
C	Is, or is designed or intended to be, at normal atmospheric pressure while any person is in the space?	Yes
D	Is or is likely to be a risk to health and safety from:	
i)	an atmosphere that does not have a safe oxygen level?	No
ii)	contaminants, including airborne gases, vapours and dusts, that may cause injury from fire or explosion?	No
iii)	harmful concentrations of any airborne contaminants?	No
iv)	engulfment?	No
Confined Space	If the answer to A and B and C and at least one of D i), ii), iii) or iv) is Yes, then the space is a Confined Space.	No

Category	Criteria: AS2865-2009	Result
A	Is the space enclosed or partially enclosed?	Yes
B	Is not intended or designed primarily for human occupancy?	Yes
C	Has an oxygen concentration outside the safe oxygen range?	No
D	Has a concentration of airborne contaminant that may cause impairment, loss of consciousness or asphyxiation?	No
E	Has a concentration of flammable airborne contaminant that may cause injury from fire or explosion?	No
F	Has a risk of engulfment in a stored free flowing solid or a rising level of liquid that may cause suffocation or drowning?	No
Confined Space	If the answer to A and B and at least one of C, D, E or F is Yes, then the space is a Confined Space.	No



Date	Amendment details	Approved by



University of South Australia Confined Space Register 2012

Assessed by: AECOM Australia Pty Ltd

Date Assessed: 10/10/2012

Assessors: Daniel Alexander

Campus:	City West
Building:	BH
Space ID:	CW-BH-38
Description:	Comms
Location:	BH5-05c

UniSA deemed: **Non-Confined Space**

UniSA deems a space Confined Space if either assessment criteria (shown below) results in Yes.

Number of Entrances:	1
Entry type:	Door / Gate
Access type:	Easy access

Comments:	This is a restricted space
Additional Hazards:	

[View on plan](#)

[Return to Register](#)

Category	Criteria: Work Health and Safety Regulations 2012 (SA)	Result
A	Is the space enclosed or partially enclosed?	Yes
B	Is not designed or intended primarily to be occupied by a person?	No
C	Is, or is designed or intended to be, at normal atmospheric pressure while any person is in the space?	Yes
D	Is or is likely to be a risk to health and safety from:	
i)	an atmosphere that does not have a safe oxygen level?	No
ii)	contaminants, including airborne gases, vapours and dusts, that may cause injury from fire or explosion?	No
iii)	harmful concentrations of any airborne contaminants?	No
iv)	engulfment?	No
Confined Space	If the answer to A and B and C and at least one of D i), ii), iii) or iv) is Yes, then the space is a Confined Space.	No

Category	Criteria: AS2865-2009	Result
A	Is the space enclosed or partially enclosed?	Yes
B	Is not intended or designed primarily for human occupancy?	No
C	Has an oxygen concentration outside the safe oxygen range?	No
D	Has a concentration of airborne contaminant that may cause impairment, loss of consciousness or asphyxiation?	No
E	Has a concentration of flammable airborne contaminant that may cause injury from fire or explosion?	No
F	Has a risk of engulfment in a stored free flowing solid or a rising level of liquid that may cause suffocation or drowning?	No
Confined Space	If the answer to A and B and at least one of C, D, E or F is Yes, then the space is a Confined Space.	No



Date	Amendment details	Approved by



University of South Australia Confined Space Register 2012

Assessed by: AECOM Australia Pty Ltd

Date Assessed: 10/10/2012

Assessors: Daniel Alexander

Campus:	City West
Building:	BH
Space ID:	CW-BH-39
Description:	Electrical Distribution Board
Location:	BH5-05b

UniSA deemed: **Non-Confined Space**

UniSA deems a space Confined Space if either assessment criteria (shown below) results in Yes.

Number of Entrances:	1
Entry type:	Door / Gate
Access type:	Easy access

Comments:	This is a restricted space
Additional Hazards:	Electrical

[View on plan](#)

[Return to Register](#)

Category	Criteria: Work Health and Safety Regulations 2012 (SA)	Result
A	Is the space enclosed or partially enclosed?	Yes
B	Is not designed or intended primarily to be occupied by a person?	No
C	Is, or is designed or intended to be, at normal atmospheric pressure while any person is in the space?	Yes
D	Is or is likely to be a risk to health and safety from:	
i)	an atmosphere that does not have a safe oxygen level?	No
ii)	contaminants, including airborne gases, vapours and dusts, that may cause injury from fire or explosion?	No
iii)	harmful concentrations of any airborne contaminants?	No
iv)	engulfment?	No
Confined Space	If the answer to A and B and C and at least one of D i), ii), iii) or iv) is Yes, then the space is a Confined Space.	No

Category	Criteria: AS2865-2009	Result
A	Is the space enclosed or partially enclosed?	Yes
B	Is not intended or designed primarily for human occupancy?	No
C	Has an oxygen concentration outside the safe oxygen range?	No
D	Has a concentration of airborne contaminant that may cause impairment, loss of consciousness or asphyxiation?	No
E	Has a concentration of flammable airborne contaminant that may cause injury from fire or explosion?	No
F	Has a risk of engulfment in a stored free flowing solid or a rising level of liquid that may cause suffocation or drowning?	No
Confined Space	If the answer to A and B and at least one of C, D, E or F is Yes, then the space is a Confined Space.	No



Date	Amendment details	Approved by



University of South Australia Confined Space Register 2012

Assessed by: AECOM Australia Pty Ltd

Date Assessed: 10/10/2012

Assessors: Daniel Alexander

Campus:	City West
Building:	BH
Space ID:	CW-BH-40
Description:	Comms
Location:	BH5-14d

UniSA deemed: **Non-Confined Space**

UniSA deems a space Confined Space if either assessment criteria (shown below) results in Yes.

Number of Entrances:	1
Entry type:	Door / Gate
Access type:	Easy access

Comments:	This is a restricted space
Additional Hazards:	

[View on plan](#)

[Return to Register](#)

Category	Criteria: Work Health and Safety Regulations 2012 (SA)	Result
A	Is the space enclosed or partially enclosed?	Yes
B	Is not designed or intended primarily to be occupied by a person?	No
C	Is, or is designed or intended to be, at normal atmospheric pressure while any person is in the space?	Yes
D	Is or is likely to be a risk to health and safety from:	
i)	an atmosphere that does not have a safe oxygen level?	No
ii)	contaminants, including airborne gases, vapours and dusts, that may cause injury from fire or explosion?	No
iii)	harmful concentrations of any airborne contaminants?	No
iv)	engulfment?	No
Confined Space	If the answer to A and B and C and at least one of D i), ii), iii) or iv) is Yes, then the space is a Confined Space.	No

Category	Criteria: AS2865-2009	Result
A	Is the space enclosed or partially enclosed?	Yes
B	Is not intended or designed primarily for human occupancy?	No
C	Has an oxygen concentration outside the safe oxygen range?	No
D	Has a concentration of airborne contaminant that may cause impairment, loss of consciousness or asphyxiation?	No
E	Has a concentration of flammable airborne contaminant that may cause injury from fire or explosion?	No
F	Has a risk of engulfment in a stored free flowing solid or a rising level of liquid that may cause suffocation or drowning?	No
Confined Space	If the answer to A and B and at least one of C, D, E or F is Yes, then the space is a Confined Space.	No



Date	Amendment details	Approved by



University of South Australia Confined Space Register 2012

Assessed by: AECOM Australia Pty Ltd

Date Assessed: 10/10/2012

Assessors: Daniel Alexander

Campus:	City West
Building:	BH
Space ID:	CW-BH-41
Description:	Electrical Distribution Board
Location:	BH5-14e

UniSA deemed:

Non-Confined Space

UniSA deems a space Confined Space if either assessment criteria (shown below) results in Yes.

Number of Entrances:	1
Entry type:	Door / Gate
Access type:	Easy access

Comments:	This is a restricted space
Additional Hazards:	Electrical

[View on plan](#)

[Return to Register](#)

Category	Criteria: Work Health and Safety Regulations 2012 (SA)	Result
A	Is the space enclosed or partially enclosed?	Yes
B	Is not designed or intended primarily to be occupied by a person?	No
C	Is, or is designed or intended to be, at normal atmospheric pressure while any person is in the space?	Yes
D	Is or is likely to be a risk to health and safety from:	
i)	an atmosphere that does not have a safe oxygen level?	No
ii)	contaminants, including airborne gases, vapours and dusts, that may cause injury from fire or explosion?	No
iii)	harmful concentrations of any airborne contaminants?	No
iv)	engulfment?	No
Confined Space	If the answer to A and B and C and at least one of D i), ii), iii) or iv) is Yes, then the space is a Confined Space.	No

Category	Criteria: AS2865-2009	Result
A	Is the space enclosed or partially enclosed?	Yes
B	Is not intended or designed primarily for human occupancy?	No
C	Has an oxygen concentration outside the safe oxygen range?	No
D	Has a concentration of airborne contaminant that may cause impairment, loss of consciousness or asphyxiation?	No
E	Has a concentration of flammable airborne contaminant that may cause injury from fire or explosion?	No
F	Has a risk of engulfment in a stored free flowing solid or a rising level of liquid that may cause suffocation or drowning?	No
Confined Space	If the answer to A and B and at least one of C, D, E or F is Yes, then the space is a Confined Space.	No



Date	Amendment details	Approved by



University of South Australia Confined Space Register 2012

Assessed by: AECOM Australia Pty Ltd

Date Assessed: 10/10/2012

Assessors: Daniel Alexander

Campus:	City West
Building:	BH
Space ID:	CW-BH-42
Description:	Plant Room
Location:	BH5-13

UniSA deemed: **Non-Confined Space**

UniSA deems a space Confined Space if either assessment criteria (shown below) results in Yes.

Number of Entrances:	1
Entry type:	Door / Gate
Access type:	Easy access

Comments:	This is a restricted space
Additional Hazards:	Slips trips and falls, Electrical, Constrained Movement

[View on plan](#)

[Return to Register](#)

Category	Criteria: Work Health and Safety Regulations 2012 (SA)	Result
A	Is the space enclosed or partially enclosed?	Yes
B	Is not designed or intended primarily to be occupied by a person?	No
C	Is, or is designed or intended to be, at normal atmospheric pressure while any person is in the space?	Yes
D	Is or is likely to be a risk to health and safety from:	
i)	an atmosphere that does not have a safe oxygen level?	No
ii)	contaminants, including airborne gases, vapours and dusts, that may cause injury from fire or explosion?	No
iii)	harmful concentrations of any airborne contaminants?	No
iv)	engulfment?	No
Confined Space	If the answer to A and B and C and at least one of D i), ii), iii) or iv) is Yes, then the space is a Confined Space.	No

Category	Criteria: AS2865-2009	Result
A	Is the space enclosed or partially enclosed?	Yes
B	Is not intended or designed primarily for human occupancy?	No
C	Has an oxygen concentration outside the safe oxygen range?	No
D	Has a concentration of airborne contaminant that may cause impairment, loss of consciousness or asphyxiation?	No
E	Has a concentration of flammable airborne contaminant that may cause injury from fire or explosion?	No
F	Has a risk of engulfment in a stored free flowing solid or a rising level of liquid that may cause suffocation or drowning?	No
Confined Space	If the answer to A and B and at least one of C, D, E or F is Yes, then the space is a Confined Space.	No



Date	Amendment details	Approved by



University of South Australia Confined Space Register 2012

Assessed by: AECOM Australia Pty Ltd

Date Assessed: 10/10/2012

Assessors: Daniel Alexander

Campus:	City West
Building:	BH
Space ID:	CW-BH-43
Description:	Duct
Location:	BH5-13

UniSA deemed: **Non-Confined Space**

UniSA deems a space Confined Space if either assessment criteria (shown below) results in Yes.

Number of Entrances:	1
Entry type:	Side hatch
Access type:	Requires manoeuvring

Comments:	This is a restricted space
Additional Hazards:	Head impact, Entrapment, Constrained movement

[View on plan](#)

[Return to Register](#)

Category	Criteria: Work Health and Safety Regulations 2012 (SA)	Result
A	Is the space enclosed or partially enclosed?	Yes
B	Is not designed or intended primarily to be occupied by a person?	Yes
C	Is, or is designed or intended to be, at normal atmospheric pressure while any person is in the space?	Yes
D	Is or is likely to be a risk to health and safety from:	
i)	an atmosphere that does not have a safe oxygen level?	No
ii)	contaminants, including airborne gases, vapours and dusts, that may cause injury from fire or explosion?	No
iii)	harmful concentrations of any airborne contaminants?	No
iv)	engulfment?	No
Confined Space	If the answer to A and B and C and at least one of D i), ii), iii) or iv) is Yes, then the space is a Confined Space.	No

Category	Criteria: AS2865-2009	Result
A	Is the space enclosed or partially enclosed?	Yes
B	Is not intended or designed primarily for human occupancy?	Yes
C	Has an oxygen concentration outside the safe oxygen range?	No
D	Has a concentration of airborne contaminant that may cause impairment, loss of consciousness or asphyxiation?	No
E	Has a concentration of flammable airborne contaminant that may cause injury from fire or explosion?	No
F	Has a risk of engulfment in a stored free flowing solid or a rising level of liquid that may cause suffocation or drowning?	No
Confined Space	If the answer to A and B and at least one of C, D, E or F is Yes, then the space is a Confined Space.	No



Date	Amendment details	Approved by



University of South Australia Confined Space Register 2012

Assessed by: AECOM Australia Pty Ltd

Date Assessed: 10/10/2012

Assessors: Daniel Alexander

Campus:	City West
Building:	BH
Space ID:	CW-BH-44
Description:	Comms
Location:	BH5-06b

UniSA deemed: **Non-Confined Space**

UniSA deems a space Confined Space if either assessment criteria (shown below) results in Yes.

Number of Entrances:	1
Entry type:	Door / Gate
Access type:	Easy access

Comments:	This is a restricted space
Additional Hazards:	

[View on plan](#)

[Return to Register](#)

Category	Criteria: Work Health and Safety Regulations 2012 (SA)	Result
A	Is the space enclosed or partially enclosed?	Yes
B	Is not designed or intended primarily to be occupied by a person?	No
C	Is, or is designed or intended to be, at normal atmospheric pressure while any person is in the space?	Yes
D	Is or is likely to be a risk to health and safety from:	
i)	an atmosphere that does not have a safe oxygen level?	No
ii)	contaminants, including airborne gases, vapours and dusts, that may cause injury from fire or explosion?	No
iii)	harmful concentrations of any airborne contaminants?	No
iv)	engulfment?	No
Confined Space	If the answer to A and B and C and at least one of D i), ii), iii) or iv) is Yes, then the space is a Confined Space.	No

Category	Criteria: AS2865-2009	Result
A	Is the space enclosed or partially enclosed?	Yes
B	Is not intended or designed primarily for human occupancy?	No
C	Has an oxygen concentration outside the safe oxygen range?	No
D	Has a concentration of airborne contaminant that may cause impairment, loss of consciousness or asphyxiation?	No
E	Has a concentration of flammable airborne contaminant that may cause injury from fire or explosion?	No
F	Has a risk of engulfment in a stored free flowing solid or a rising level of liquid that may cause suffocation or drowning?	No
Confined Space	If the answer to A and B and at least one of C, D, E or F is Yes, then the space is a Confined Space.	No



Date	Amendment details	Approved by



University of South Australia Confined Space Register 2012

Assessed by: AECOM Australia Pty Ltd

Date Assessed: 10/10/2012

Assessors: Daniel Alexander

Campus:	City West
Building:	BH
Space ID:	CW-BH-45
Description:	Electrical Distribution Board
Location:	BH5-06a

UniSA deemed:

Non-Confined Space

UniSA deems a space Confined Space if either assessment criteria (shown below) results in Yes.

Number of Entrances:	1
Entry type:	Door / Gate
Access type:	Easy access

Comments:	This is a restricted space
Additional Hazards:	Electrical

[View on plan](#)

[Return to Register](#)

Category	Criteria: Work Health and Safety Regulations 2012 (SA)	Result
A	Is the space enclosed or partially enclosed?	Yes
B	Is not designed or intended primarily to be occupied by a person?	No
C	Is, or is designed or intended to be, at normal atmospheric pressure while any person is in the space?	Yes
D	Is or is likely to be a risk to health and safety from:	
i)	an atmosphere that does not have a safe oxygen level?	No
ii)	contaminants, including airborne gases, vapours and dusts, that may cause injury from fire or explosion?	No
iii)	harmful concentrations of any airborne contaminants?	No
iv)	engulfment?	No
Confined Space	If the answer to A and B and C and at least one of D i), ii), iii) or iv) is Yes, then the space is a Confined Space.	No

Category	Criteria: AS2865-2009	Result
A	Is the space enclosed or partially enclosed?	Yes
B	Is not intended or designed primarily for human occupancy?	No
C	Has an oxygen concentration outside the safe oxygen range?	No
D	Has a concentration of airborne contaminant that may cause impairment, loss of consciousness or asphyxiation?	No
E	Has a concentration of flammable airborne contaminant that may cause injury from fire or explosion?	No
F	Has a risk of engulfment in a stored free flowing solid or a rising level of liquid that may cause suffocation or drowning?	No
Confined Space	If the answer to A and B and at least one of C, D, E or F is Yes, then the space is a Confined Space.	No



Date	Amendment details	Approved by



University of South Australia Confined Space Register 2012

Assessed by: AECOM Australia Pty Ltd

Date Assessed: 10/10/2012

Assessors: Daniel Alexander

Campus:	City West
Building:	BH
Space ID:	CW-BH-46
Description:	Plant Room
Location:	BH5-08

UniSA deemed: **Non-Confined Space**

UniSA deems a space Confined Space if either assessment criteria (shown below) results in Yes.

Number of Entrances:	1
Entry type:	Door / Gate
Access type:	Easy access

Comments:	This is a restricted space
Additional Hazards:	Slips trips and falls, Electrical, Constrained Movement

[View on plan](#)

[Return to Register](#)

Category	Criteria: Work Health and Safety Regulations 2012 (SA)	Result
A	Is the space enclosed or partially enclosed?	Yes
B	Is not designed or intended primarily to be occupied by a person?	No
C	Is, or is designed or intended to be, at normal atmospheric pressure while any person is in the space?	Yes
D	Is or is likely to be a risk to health and safety from:	
i)	an atmosphere that does not have a safe oxygen level?	No
ii)	contaminants, including airborne gases, vapours and dusts, that may cause injury from fire or explosion?	No
iii)	harmful concentrations of any airborne contaminants?	No
iv)	engulfment?	No
Confined Space	If the answer to A and B and C and at least one of D i), ii), iii) or iv) is Yes, then the space is a Confined Space.	No

Category	Criteria: AS2865-2009	Result
A	Is the space enclosed or partially enclosed?	Yes
B	Is not intended or designed primarily for human occupancy?	No
C	Has an oxygen concentration outside the safe oxygen range?	No
D	Has a concentration of airborne contaminant that may cause impairment, loss of consciousness or asphyxiation?	No
E	Has a concentration of flammable airborne contaminant that may cause injury from fire or explosion?	No
F	Has a risk of engulfment in a stored free flowing solid or a rising level of liquid that may cause suffocation or drowning?	No
Confined Space	If the answer to A and B and at least one of C, D, E or F is Yes, then the space is a Confined Space.	No



Date	Amendment details	Approved by



University of South Australia Confined Space Register 2012

Assessed by: AECOM Australia Pty Ltd

Date Assessed: 10/10/2012

Assessors: Daniel Alexander

Campus:	City West
Building:	BH
Space ID:	CW-BH-47
Description:	Roof Access
Location:	BH5-12

UniSA deemed: **Non-Confined Space**

UniSA deems a space Confined Space if either assessment criteria (shown below) results in Yes.

Number of Entrances:	1
Entry type:	Door / Gate
Access type:	Stair

Comments:	This is a restricted space
Additional Hazards:	Fall from heights, Slips trips and falls

[View on plan](#)

[Return to Register](#)

Category	Criteria: Work Health and Safety Regulations 2012 (SA)	Result
A	Is the space enclosed or partially enclosed?	No
B	Is not designed or intended primarily to be occupied by a person?	Yes
C	Is, or is designed or intended to be, at normal atmospheric pressure while any person is in the space?	Yes
D	Is or is likely to be a risk to health and safety from:	
i)	an atmosphere that does not have a safe oxygen level?	No
ii)	contaminants, including airborne gases, vapours and dusts, that may cause injury from fire or explosion?	No
iii)	harmful concentrations of any airborne contaminants?	No
iv)	engulfment?	No
Confined Space	If the answer to A and B and C and at least one of D i), ii), iii) or iv) is Yes, then the space is a Confined Space.	No

Category	Criteria: AS2865-2009	Result
A	Is the space enclosed or partially enclosed?	No
B	Is not intended or designed primarily for human occupancy?	Yes
C	Has an oxygen concentration outside the safe oxygen range?	No
D	Has a concentration of airborne contaminant that may cause impairment, loss of consciousness or asphyxiation?	No
E	Has a concentration of flammable airborne contaminant that may cause injury from fire or explosion?	No
F	Has a risk of engulfment in a stored free flowing solid or a rising level of liquid that may cause suffocation or drowning?	No
Confined Space	If the answer to A and B and at least one of C, D, E or F is Yes, then the space is a Confined Space.	No



Date	Amendment details	Approved by



University of South Australia Confined Space Register 2012

Assessed by: AECOM Australia Pty Ltd

Date Assessed: 10/10/2012

Assessors: Daniel Alexander

Campus:	City West
Building:	BH
Space ID:	CW-BH-48
Description:	Plant Room
Location:	BH5-17

UniSA deemed: **Non-Confined Space**

UniSA deems a space Confined Space if either assessment criteria (shown below) results in Yes.

Number of Entrances:	1
Entry type:	Door / Gate
Access type:	Easy access

Comments:	This is a restricted space
Additional Hazards:	Head impact, Slips trips and falls, Constrained movement

[View on plan](#)

[Return to Register](#)

Category	Criteria: Work Health and Safety Regulations 2012 (SA)	Result
A	Is the space enclosed or partially enclosed?	Yes
B	Is not designed or intended primarily to be occupied by a person?	No
C	Is, or is designed or intended to be, at normal atmospheric pressure while any person is in the space?	Yes
D	Is or is likely to be a risk to health and safety from:	
i)	an atmosphere that does not have a safe oxygen level?	No
ii)	contaminants, including airborne gases, vapours and dusts, that may cause injury from fire or explosion?	No
iii)	harmful concentrations of any airborne contaminants?	No
iv)	engulfment?	No
Confined Space	If the answer to A and B and C and at least one of D i), ii), iii) or iv) is Yes, then the space is a Confined Space.	No

Category	Criteria: AS2865-2009	Result
A	Is the space enclosed or partially enclosed?	Yes
B	Is not intended or designed primarily for human occupancy?	No
C	Has an oxygen concentration outside the safe oxygen range?	No
D	Has a concentration of airborne contaminant that may cause impairment, loss of consciousness or asphyxiation?	No
E	Has a concentration of flammable airborne contaminant that may cause injury from fire or explosion?	No
F	Has a risk of engulfment in a stored free flowing solid or a rising level of liquid that may cause suffocation or drowning?	No
Confined Space	If the answer to A and B and at least one of C, D, E or F is Yes, then the space is a Confined Space.	No



Date	Amendment details	Approved by

University of South Australia Confined Space Register 2012

Assessed by: AECOM Australia Pty Ltd

Date Assessed: 10/10/2012

Assessors: Daniel Alexander

Campus:	City West
Building:	BH
Space ID:	CW-BH-49
Description:	Air Handling Unit
Location:	BH5-17

UniSA deemed: **Non-Confined Space**

UniSA deems a space Confined Space if either assessment criteria (shown below) results in Yes.

Number of Entrances:	2
Entry type:	Side hatch
Access type:	Requires manoeuvring

Comments:	This is a restricted space
Additional Hazards:	Head impact, Cold stress, Mechanical, Constrained movement

[View on plan](#)

[Return to Register](#)

Category	Criteria: Work Health and Safety Regulations 2012 (SA)	Result
A	Is the space enclosed or partially enclosed?	Yes
B	Is not designed or intended primarily to be occupied by a person?	Yes
C	Is, or is designed or intended to be, at normal atmospheric pressure while any person is in the space?	Yes
D	Is or is likely to be a risk to health and safety from:	
i)	an atmosphere that does not have a safe oxygen level?	No
ii)	contaminants, including airborne gases, vapours and dusts, that may cause injury from fire or explosion?	No
iii)	harmful concentrations of any airborne contaminants?	No
iv)	engulfment?	No
Confined Space	If the answer to A and B and C and at least one of D i), ii), iii) or iv) is Yes, then the space is a Confined Space.	No

Category	Criteria: AS2865-2009	Result
A	Is the space enclosed or partially enclosed?	Yes
B	Is not intended or designed primarily for human occupancy?	Yes
C	Has an oxygen concentration outside the safe oxygen range?	No
D	Has a concentration of airborne contaminant that may cause impairment, loss of consciousness or asphyxiation?	No
E	Has a concentration of flammable airborne contaminant that may cause injury from fire or explosion?	No
F	Has a risk of engulfment in a stored free flowing solid or a rising level of liquid that may cause suffocation or drowning?	No
Confined Space	If the answer to A and B and at least one of C, D, E or F is Yes, then the space is a Confined Space.	No



Date	Amendment details	Approved by

University of South Australia Confined Space Register 2012

Assessed by: AECOM Australia Pty Ltd

Date Assessed: 10/10/2012

Assessors: Daniel Alexander

Campus:	City West
Building:	BH
Space ID:	CW-BH-50
Description:	Cold Store
Location:	BH2-36

UniSA deemed: **Non-Confined Space**

UniSA deems a space Confined Space if either assessment criteria (shown below) results in Yes.

Number of Entrances:	1
Entry type:	Door / Gate
Access type:	Easy access

Comments:	This is a restricted space
Additional Hazards:	Cold Stress

[View on plan](#)

[Return to Register](#)

Category	Criteria: Work Health and Safety Regulations 2012 (SA)	Result
A	Is the space enclosed or partially enclosed?	Yes
B	Is not designed or intended primarily to be occupied by a person?	No
C	Is, or is designed or intended to be, at normal atmospheric pressure while any person is in the space?	Yes
D	Is or is likely to be a risk to health and safety from:	
i)	an atmosphere that does not have a safe oxygen level?	No
ii)	contaminants, including airborne gases, vapours and dusts, that may cause injury from fire or explosion?	No
iii)	harmful concentrations of any airborne contaminants?	No
iv)	engulfment?	No
Confined Space	If the answer to A and B and C and at least one of D i), ii), iii) or iv) is Yes, then the space is a Confined Space.	No

Category	Criteria: AS2865-2009	Result
A	Is the space enclosed or partially enclosed?	Yes
B	Is not intended or designed primarily for human occupancy?	No
C	Has an oxygen concentration outside the safe oxygen range?	No
D	Has a concentration of airborne contaminant that may cause impairment, loss of consciousness or asphyxiation?	No
E	Has a concentration of flammable airborne contaminant that may cause injury from fire or explosion?	No
F	Has a risk of engulfment in a stored free flowing solid or a rising level of liquid that may cause suffocation or drowning?	No
Confined Space	If the answer to A and B and at least one of C, D, E or F is Yes, then the space is a Confined Space.	No



Date	Amendment details	Approved by