

Confined Space Register 2012

Original assessment by AECOM Australia Pty Ltd



Magill Building C

Version 1

Note: document links in blue underline text
Symbols on plans are also links

Version No.	Date	Amendment details	Approved by
1	24/09/2012	Original version as assessed by AECOM Australia Pty Ltd	-

**This Confined Space Register does not remove the requirement for
contractors to complete their own work-based risk assessment.**

Please [refer to Appendix](#) for other spaces assessed.

AECOM

Declassifying Statement

AECOM's assessment of a confined space was based on the information provided by the University of South Australia (UniSA) site representative and visual observation on the day. Risk assessment and hazard identification of a confined space was classified in accordance with:

- Work Health and Safety Regulations 2012 (SA);
- AS2865-2009.

Should UniSA wish to declassify a space which AECOM has deemed to be a 'Confined Space', *section 2.4.6 of AS 2865-2009* must be adhered to as stated below.

"For a space which has previously been classified as a confined space to be reclassified as a non-confined space, it needs to have undergone sufficient changes in structure or usages to eliminate (without the need for risk control measures) all possible sources of inherent hazard that define a confined space. Any changes to a confined space would have to be such that a subsequent risk assessment would determine that it no longer meets the criteria for a confined space".

Sufficient evidence to show that the statement above has been met must be provided to the University of South Australia Facilities Management Unit who has the appropriate privilege to alter the Confined Space Register.

Space ID	Space description	Location	Confined Space according to Work Health and Safety Regulations 2012 (SA)?	Confined Space according to AS 2865-2009?	UniSA deemed Confined Space?	Comments	Link to details	Link to Plan
----------	-------------------	----------	---	---	------------------------------	----------	-----------------	--------------

No Confined Spaces assessed

LEGEND

GREEN Deemed Non-Confined Space

1 ACCESS DIRECTION (relative to plan)



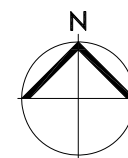
Level 2,
101 Currie Street,
Adelaide. SA 5000
Phone 8302 2762
Fax 8302 2708

MAGILL CAMPUS

BUILDING C
LEVEL 01

Plot Date:
06/09/2012 08:49

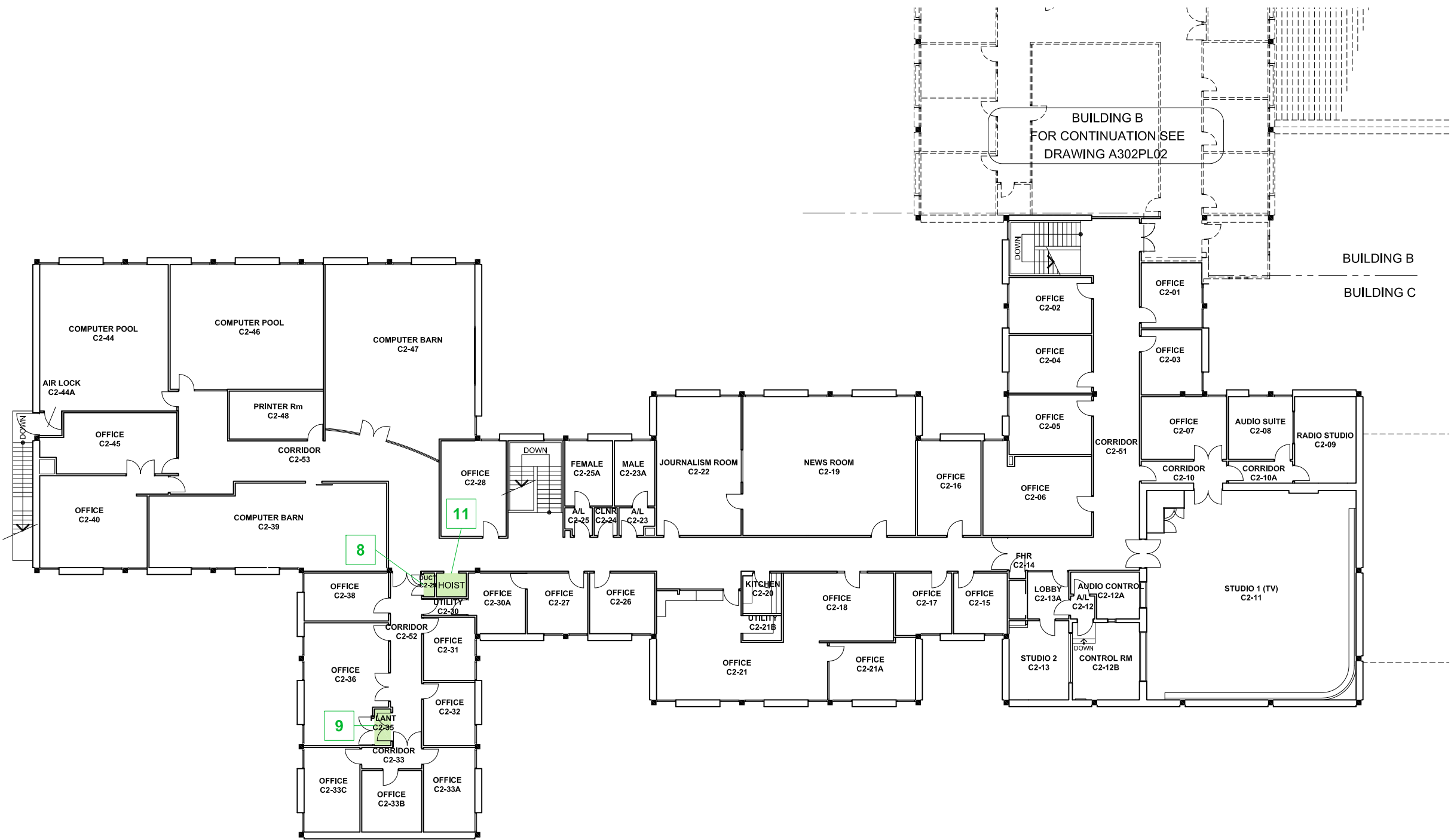
A



All drawings remain the property of the University of South Australia and must be returned upon request. These drawings are subject to change without notice. Any errors and/or omissions should be reported to the Facilities Management Unit.

LEGEND

- RED Deemed Confined Space
- GREEN Deemed Non-Confined Space
- 1 ROOM
- 1 ABOVE OR BELOW CURRENT LEVEL
- 1 WITHIN ROOM
- 1 ACCESS TO ABOVE
- 1 ACCESS TO BELOW
- 1 ACCESS DIRECTION (relative to plan)



UNIVERSITY OF SOUTH AUSTRALIA

FACILITIES MANAGEMENT UNIT

Level 2,
101 Currie Street,
Adelaide. SA 5000
Phone 8302 2762
Fax 8302 2708

CONFINED SPACE
MAGILL CAMPUS

Building

BUILDING C
LEVEL 02

Scale:
Not to scale
Last Update:
14/01/2013

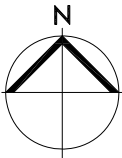
Drawn:
SMG
Plot Date:
06/09/2012 08:49

Drawing No.:

H303CS02

Revision:

A



Appendix

Register of other spaces assessed

Magill
Building C

**This Register does not remove the requirement for
contractors to complete their own work-based risk assessment.**

**Magill
Building C**

Version 1

Space ID	Space description	Location	Confined Space according to Work Health and Safety Regulations 2012 (SA)?	Confined Space according to AS 2865-2009?	UniSA deemed Confined Space?	Comments	Link to details	Link to Plan
MG-C-01	Plant Room	C1-01	No	No	Non-Confined Space	This is a restricted space	MG-C-01	Level 1
MG-C-02	Air Handling Unit x 3	C1-01	No	No	Non-Confined Space	This is a restricted space	MG-C-02	Level 1
MG-C-03	APAC Heat Pump	C1-01	No	No	Non-Confined Space	This is a restricted space	MG-C-03	Level 1
MG-C-04	Switchboard	C1-23	No	No	Non-Confined Space	This is a restricted space	MG-C-04	Level 1
MG-C-05	Hoist	C1-68	No	No	Non-Confined Space	This is a restricted space	MG-C-05	Level 1
MG-C-06	Electrical Distribution Board	C1-69	No	No	Non-Confined Space	This is a restricted space	MG-C-06	Level 1
MG-C-07	Service Riser	C1-47	No	No	Non-Confined Space	This is a restricted space	MG-C-07	Level 1
MG-C-08	Electrical Distribution Board	C2-29	No	No	Non-Confined Space	This is a restricted space	MG-C-08	Level 2
MG-C-09	Plant Room	C2-35	No	No	Non-Confined Space	This is a restricted space	MG-C-09	Level 2
MG-C-10	Plant Room	C1-80	No	No	Non-Confined Space	This is a restricted space	MG-C-10	Level 1
MG-C-11	Hoist	via C2-53	No	No	Non-Confined Space	This is a restricted space	MG-C-11	Level 2

University of South Australia Confined Space Register 2012

Assessed by: AECOM Australia Pty Ltd

Date Assessed: 24/09/2012

Assessors: Daniel Alexander

Campus:	Magill
Building:	C
Space ID:	MG-C-01
Description:	Plant Room
Location:	C1-01

UniSA deemed: **Non-Confined Space**

UniSA deems a space Confined Space if either assessment criteria (shown below) results in Yes.

Number of Entrances:	1
Entry type:	Door / Gate
Access type:	Easy access

Comments:	This is a restricted space
Additional Hazards:	Slips, trips and falls, Mechanical, Noise

[View on plan](#)

[Return to Register](#)

Category	Criteria: Work Health and Safety Regulations 2012 (SA)	Result
A	Is the space enclosed or partially enclosed?	Yes
B	Is not designed or intended primarily to be occupied by a person?	No
C	Is, or is designed or intended to be, at normal atmospheric pressure while any person is in the space?	Yes
D	Is or is likely to be a risk to health and safety from:	
i)	an atmosphere that does not have a safe oxygen level?	No
ii)	contaminants, including airborne gases, vapours and dusts, that may cause injury from fire or explosion?	No
iii)	harmful concentrations of any airborne contaminants?	No
iv)	engulfment?	No
Confined Space	If the answer to A and B and C and at least one of D i), ii), iii) or iv) is Yes, then the space is a Confined Space.	No

Category	Criteria: AS2865-2009	Result
A	Is the space enclosed or partially enclosed?	Yes
B	Is not intended or designed primarily for human occupancy?	Yes
C	Has an oxygen concentration outside the safe oxygen range?	No
D	Has a concentration of airborne contaminant that may cause impairment, loss of consciousness or asphyxiation?	No
E	Has a concentration of flammable airborne contaminant that may cause injury from fire or explosion?	No
F	Has a risk of engulfment in a stored free flowing solid or a rising level of liquid that may cause suffocation or drowning?	No
Confined Space	If the answer to A and B and at least one of C, D, E or F is Yes, then the space is a Confined Space.	No



Date	Amendment details	Approved by



University of South Australia Confined Space Register 2012

Assessed by: AECOM Australia Pty Ltd

Date Assessed: 24/09/2012

Assessors: Daniel Alexander

Campus:	Magill
Building:	C
Space ID:	MG-C-02
Description:	Air Handling Unit x 3
Location:	C1-01

UniSA deemed: Non-Confined Space

UniSA deems a space Confined Space if either assessment criteria (shown below) results in Yes.

Number of Entrances:	1
Entry type:	Side hatch
Access type:	Requires manoeuvring

Comments:	This is a restricted space
Additional Hazards:	Mechanical, Cold stress, Constrained movement

[View on plan](#)

[Return to Register](#)

Category	Criteria: Work Health and Safety Regulations 2012 (SA)	Result
A	Is the space enclosed or partially enclosed?	Yes
B	Is not designed or intended primarily to be occupied by a person?	Yes
C	Is, or is designed or intended to be, at normal atmospheric pressure while any person is in the space?	Yes
D	Is or is likely to be a risk to health and safety from:	
i)	an atmosphere that does not have a safe oxygen level?	No
ii)	contaminants, including airborne gases, vapours and dusts, that may cause injury from fire or explosion?	No
iii)	harmful concentrations of any airborne contaminants?	No
iv)	engulfment?	No
Confined Space	If the answer to A and B and C and at least one of D i), ii), iii) or iv) is Yes, then the space is a Confined Space.	No

Category	Criteria: AS2865-2009	Result
A	Is the space enclosed or partially enclosed?	Yes
B	Is not intended or designed primarily for human occupancy?	Yes
C	Has an oxygen concentration outside the safe oxygen range?	No
D	Has a concentration of airborne contaminant that may cause impairment, loss of consciousness or asphyxiation?	No
E	Has a concentration of flammable airborne contaminant that may cause injury from fire or explosion?	No
F	Has a risk of engulfment in a stored free flowing solid or a rising level of liquid that may cause suffocation or drowning?	No
Confined Space	If the answer to A and B and at least one of C, D, E or F is Yes, then the space is a Confined Space.	No



Date	Amendment details	Approved by

University of South Australia Confined Space Register 2012

Assessed by: AECOM Australia Pty Ltd

Date Assessed: 24/09/2012

Assessors: Daniel Alexander

Campus:	Magill
Building:	C
Space ID:	MG-C-03
Description:	APAC Heat Pump
Location:	C1-01

UniSA deemed: **Non-Confined Space**

UniSA deems a space Confined Space if either assessment criteria (shown below) results in Yes.

Number of Entrances:	1
Entry type:	Side hatch
Access type:	Requires manoeuvring

Comments:	This is a restricted space
Additional Hazards:	Mechanical, Constrained movement

[View on plan](#)

[Return to Register](#)

Category	Criteria: Work Health and Safety Regulations 2012 (SA)	Result
A	Is the space enclosed or partially enclosed?	Yes
B	Is not designed or intended primarily to be occupied by a person?	Yes
C	Is, or is designed or intended to be, at normal atmospheric pressure while any person is in the space?	Yes
D	Is or is likely to be a risk to health and safety from:	
i)	an atmosphere that does not have a safe oxygen level?	No
ii)	contaminants, including airborne gases, vapours and dusts, that may cause injury from fire or explosion?	No
iii)	harmful concentrations of any airborne contaminants?	No
iv)	engulfment?	No
Confined Space	If the answer to A and B and C and at least one of D i), ii), iii) or iv) is Yes, then the space is a Confined Space.	No

Category	Criteria: AS2865-2009	Result
A	Is the space enclosed or partially enclosed?	Yes
B	Is not intended or designed primarily for human occupancy?	Yes
C	Has an oxygen concentration outside the safe oxygen range?	No
D	Has a concentration of airborne contaminant that may cause impairment, loss of consciousness or asphyxiation?	No
E	Has a concentration of flammable airborne contaminant that may cause injury from fire or explosion?	No
F	Has a risk of engulfment in a stored free flowing solid or a rising level of liquid that may cause suffocation or drowning?	No
Confined Space	If the answer to A and B and at least one of C, D, E or F is Yes, then the space is a Confined Space.	No



Date	Amendment details	Approved by

University of South Australia Confined Space Register 2012

Assessed by: AECOM Australia Pty Ltd

Date Assessed: 24/09/2012

Assessors: Daniel Alexander

Campus:	Magill
Building:	C
Space ID:	MG-C-04
Description:	Switchboard
Location:	C1-23

UniSA deemed: **Non-Confined Space**

UniSA deems a space Confined Space if either assessment criteria (shown below) results in Yes.

Number of Entrances:	1
Entry type:	Door / Gate
Access type:	Easy access

Comments:	This is a restricted space
Additional Hazards:	Electrical

[View on plan](#)

[Return to Register](#)

Category	Criteria: Work Health and Safety Regulations 2012 (SA)	Result
A	Is the space enclosed or partially enclosed?	Yes
B	Is not designed or intended primarily to be occupied by a person?	No
C	Is, or is designed or intended to be, at normal atmospheric pressure while any person is in the space?	Yes
D	Is or is likely to be a risk to health and safety from:	
i)	an atmosphere that does not have a safe oxygen level?	No
ii)	contaminants, including airborne gases, vapours and dusts, that may cause injury from fire or explosion?	No
iii)	harmful concentrations of any airborne contaminants?	No
iv)	engulfment?	No
Confined Space	If the answer to A and B and C and at least one of D i), ii), iii) or iv) is Yes, then the space is a Confined Space.	No

Category	Criteria: AS2865-2009	Result
A	Is the space enclosed or partially enclosed?	Yes
B	Is not intended or designed primarily for human occupancy?	Yes
C	Has an oxygen concentration outside the safe oxygen range?	No
D	Has a concentration of airborne contaminant that may cause impairment, loss of consciousness or asphyxiation?	No
E	Has a concentration of flammable airborne contaminant that may cause injury from fire or explosion?	No
F	Has a risk of engulfment in a stored free flowing solid or a rising level of liquid that may cause suffocation or drowning?	No
Confined Space	If the answer to A and B and at least one of C, D, E or F is Yes, then the space is a Confined Space.	No



Date	Amendment details	Approved by



University of South Australia Confined Space Register 2012

Assessed by: AECOM Australia Pty Ltd

Date Assessed: 24/09/2012

Assessors: Daniel Alexander

Campus:	Magill
Building:	C
Space ID:	MG-C-05
Description:	Hoist
Location:	C1-68

UniSA deemed: **Non-Confined Space**

UniSA deems a space Confined Space if either assessment criteria (shown below) results in Yes.

Number of Entrances:	1
Entry type:	Door / Gate
Access type:	Easy access

Comments:	This is a restricted space
Additional Hazards:	Head impact, Constrained movement

[View on plan](#)

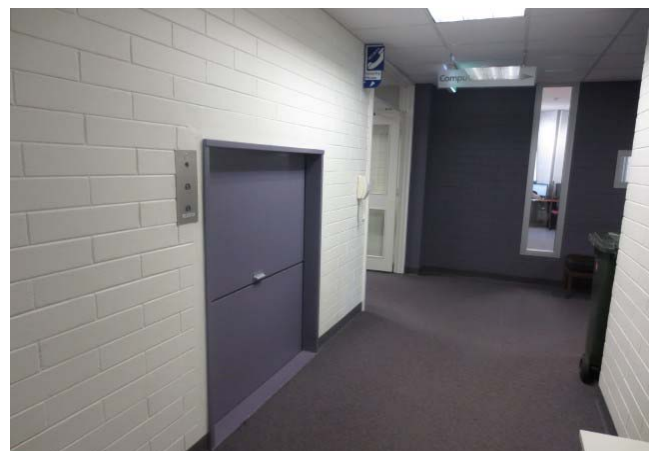
[Return to Register](#)

Category	Criteria: Work Health and Safety Regulations 2012 (SA)	Result
A	Is the space enclosed or partially enclosed?	Yes
B	Is not designed or intended primarily to be occupied by a person?	No
C	Is, or is designed or intended to be, at normal atmospheric pressure while any person is in the space?	Yes
D	Is or is likely to be a risk to health and safety from:	
i)	an atmosphere that does not have a safe oxygen level?	No
ii)	contaminants, including airborne gases, vapours and dusts, that may cause injury from fire or explosion?	No
iii)	harmful concentrations of any airborne contaminants?	No
iv)	engulfment?	No
Confined Space	If the answer to A and B and C and at least one of D i), ii), iii) or iv) is Yes, then the space is a Confined Space.	No

Category	Criteria: AS2865-2009	Result
A	Is the space enclosed or partially enclosed?	Yes
B	Is not intended or designed primarily for human occupancy?	Yes
C	Has an oxygen concentration outside the safe oxygen range?	No
D	Has a concentration of airborne contaminant that may cause impairment, loss of consciousness or asphyxiation?	No
E	Has a concentration of flammable airborne contaminant that may cause injury from fire or explosion?	No
F	Has a risk of engulfment in a stored free flowing solid or a rising level of liquid that may cause suffocation or drowning?	No
Confined Space	If the answer to A and B and at least one of C, D, E or F is Yes, then the space is a Confined Space.	No



Date	Amendment details	Approved by



University of South Australia Confined Space Register 2012

Assessed by: AECOM Australia Pty Ltd

Date Assessed: 24/09/2012

Assessors: Daniel Alexander

Campus:	Magill
Building:	C
Space ID:	MG-C-06
Description:	Electrical Distribution Board
Location:	C1-69

UniSA deemed: **Non-Confined Space**

UniSA deems a space Confined Space if either assessment criteria (shown below) results in Yes.

Number of Entrances:	1
Entry type:	Door / Gate
Access type:	Easy access

Comments:	This is a restricted space
Additional Hazards:	Electrical

[View on plan](#)

[Return to Register](#)

Category	Criteria: Work Health and Safety Regulations 2012 (SA)	Result
A	Is the space enclosed or partially enclosed?	Yes
B	Is not designed or intended primarily to be occupied by a person?	No
C	Is, or is designed or intended to be, at normal atmospheric pressure while any person is in the space?	Yes
D	Is or is likely to be a risk to health and safety from:	
i)	an atmosphere that does not have a safe oxygen level?	No
ii)	contaminants, including airborne gases, vapours and dusts, that may cause injury from fire or explosion?	No
iii)	harmful concentrations of any airborne contaminants?	No
iv)	engulfment?	No
Confined Space	If the answer to A and B and C and at least one of D i), ii), iii) or iv) is Yes, then the space is a Confined Space.	No

Category	Criteria: AS2865-2009	Result
A	Is the space enclosed or partially enclosed?	Yes
B	Is not intended or designed primarily for human occupancy?	Yes
C	Has an oxygen concentration outside the safe oxygen range?	No
D	Has a concentration of airborne contaminant that may cause impairment, loss of consciousness or asphyxiation?	No
E	Has a concentration of flammable airborne contaminant that may cause injury from fire or explosion?	No
F	Has a risk of engulfment in a stored free flowing solid or a rising level of liquid that may cause suffocation or drowning?	No
Confined Space	If the answer to A and B and at least one of C, D, E or F is Yes, then the space is a Confined Space.	No



Date	Amendment details	Approved by



University of South Australia Confined Space Register 2012

Assessed by: AECOM Australia Pty Ltd

Date Assessed: 24/09/2012

Assessors: Daniel Alexander

Campus:	Magill
Building:	C
Space ID:	MG-C-07
Description:	Service Riser
Location:	C1-47

UniSA deemed: **Non-Confined Space**

UniSA deems a space Confined Space if either assessment criteria (shown below) results in Yes.

Number of Entrances:	1
Entry type:	Door / Gate
Access type:	Easy access

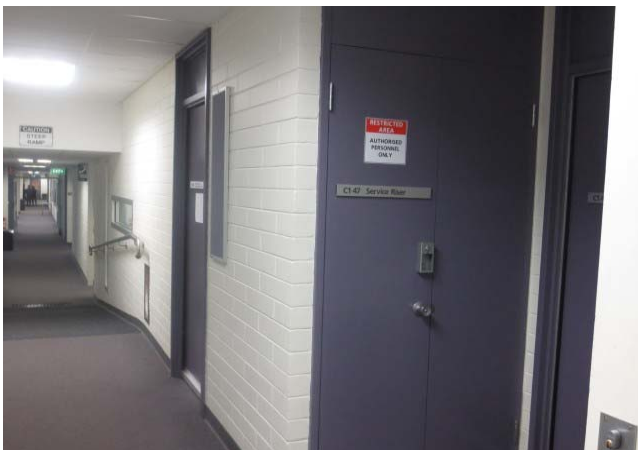
Comments:	This is a restricted space
Additional Hazards:	Electrical

[View on plan](#)

[Return to Register](#)

Category	Criteria: Work Health and Safety Regulations 2012 (SA)	Result
A	Is the space enclosed or partially enclosed?	Yes
B	Is not designed or intended primarily to be occupied by a person?	No
C	Is, or is designed or intended to be, at normal atmospheric pressure while any person is in the space?	Yes
D	Is or is likely to be a risk to health and safety from:	
i)	an atmosphere that does not have a safe oxygen level?	No
ii)	contaminants, including airborne gases, vapours and dusts, that may cause injury from fire or explosion?	No
iii)	harmful concentrations of any airborne contaminants?	No
iv)	engulfment?	No
Confined Space	If the answer to A and B and C and at least one of D i), ii), iii) or iv) is Yes, then the space is a Confined Space.	No

Category	Criteria: AS2865-2009	Result
A	Is the space enclosed or partially enclosed?	Yes
B	Is not intended or designed primarily for human occupancy?	Yes
C	Has an oxygen concentration outside the safe oxygen range?	No
D	Has a concentration of airborne contaminant that may cause impairment, loss of consciousness or asphyxiation?	No
E	Has a concentration of flammable airborne contaminant that may cause injury from fire or explosion?	No
F	Has a risk of engulfment in a stored free flowing solid or a rising level of liquid that may cause suffocation or drowning?	No
Confined Space	If the answer to A and B and at least one of C, D, E or F is Yes, then the space is a Confined Space.	No



Date	Amendment details	Approved by



University of South Australia Confined Space Register 2012

Assessed by: AECOM Australia Pty Ltd

Date Assessed: 24/09/2012

Assessors: Daniel Alexander

Campus:	Magill
Building:	C
Space ID:	MG-C-08
Description:	Electrical Distribution Board
Location:	C2-29

UniSA deemed: **Non-Confined Space**

UniSA deems a space Confined Space if either assessment criteria (shown below) results in Yes.

Number of Entrances:	1
Entry type:	Door / Gate
Access type:	Easy access

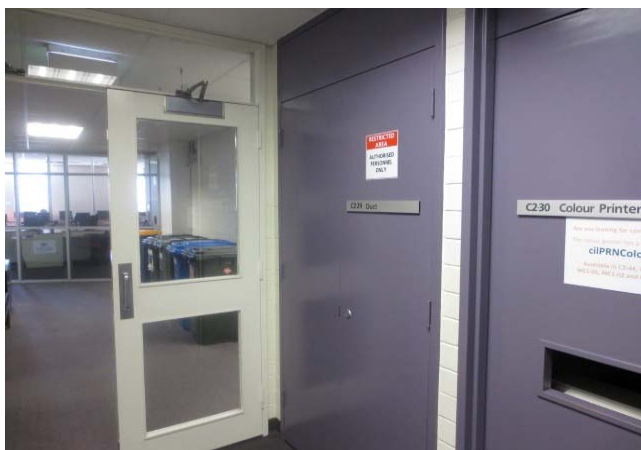
Comments:	This is a restricted space
Additional Hazards:	Electrical

[View on plan](#)

[Return to Register](#)

Category	Criteria: Work Health and Safety Regulations 2012 (SA)	Result
A	Is the space enclosed or partially enclosed?	Yes
B	Is not designed or intended primarily to be occupied by a person?	No
C	Is, or is designed or intended to be, at normal atmospheric pressure while any person is in the space?	Yes
D	Is or is likely to be a risk to health and safety from:	
i)	an atmosphere that does not have a safe oxygen level?	No
ii)	contaminants, including airborne gases, vapours and dusts, that may cause injury from fire or explosion?	No
iii)	harmful concentrations of any airborne contaminants?	No
iv)	engulfment?	No
Confined Space	If the answer to A and B and C and at least one of D i), ii), iii) or iv) is Yes, then the space is a Confined Space.	No

Category	Criteria: AS2865-2009	Result
A	Is the space enclosed or partially enclosed?	Yes
B	Is not intended or designed primarily for human occupancy?	Yes
C	Has an oxygen concentration outside the safe oxygen range?	No
D	Has a concentration of airborne contaminant that may cause impairment, loss of consciousness or asphyxiation?	No
E	Has a concentration of flammable airborne contaminant that may cause injury from fire or explosion?	No
F	Has a risk of engulfment in a stored free flowing solid or a rising level of liquid that may cause suffocation or drowning?	No
Confined Space	If the answer to A and B and at least one of C, D, E or F is Yes, then the space is a Confined Space.	No



Date	Amendment details	Approved by



University of South Australia Confined Space Register 2012

Assessed by: AECOM Australia Pty Ltd

Date Assessed: 24/09/2012

Assessors: Daniel Alexander

Campus:	Magill
Building:	C
Space ID:	MG-C-09
Description:	Plant Room
Location:	C2-35

UniSA deemed: **Non-Confined Space**

UniSA deems a space Confined Space if either assessment criteria (shown below) results in Yes.

Number of Entrances:	1
Entry type:	Door / Gate
Access type:	Easy access

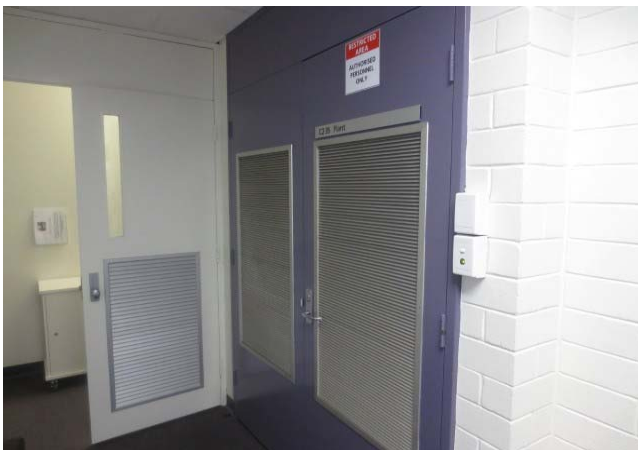
Comments:	This is a restricted space
Additional Hazards:	Constrained movement

[View on plan](#)

[Return to Register](#)

Category	Criteria: Work Health and Safety Regulations 2012 (SA)	Result
A	Is the space enclosed or partially enclosed?	Yes
B	Is not designed or intended primarily to be occupied by a person?	No
C	Is, or is designed or intended to be, at normal atmospheric pressure while any person is in the space?	Yes
D	Is or is likely to be a risk to health and safety from:	
i)	an atmosphere that does not have a safe oxygen level?	No
ii)	contaminants, including airborne gases, vapours and dusts, that may cause injury from fire or explosion?	No
iii)	harmful concentrations of any airborne contaminants?	No
iv)	engulfment?	No
Confined Space	If the answer to A and B and C and at least one of D i), ii), iii) or iv) is Yes, then the space is a Confined Space.	No

Category	Criteria: AS2865-2009	Result
A	Is the space enclosed or partially enclosed?	Yes
B	Is not intended or designed primarily for human occupancy?	Yes
C	Has an oxygen concentration outside the safe oxygen range?	No
D	Has a concentration of airborne contaminant that may cause impairment, loss of consciousness or asphyxiation?	No
E	Has a concentration of flammable airborne contaminant that may cause injury from fire or explosion?	No
F	Has a risk of engulfment in a stored free flowing solid or a rising level of liquid that may cause suffocation or drowning?	No
Confined Space	If the answer to A and B and at least one of C, D, E or F is Yes, then the space is a Confined Space.	No



Date	Amendment details	Approved by



University of South Australia Confined Space Register 2012

Assessed by: AECOM Australia Pty Ltd

Date Assessed: 24/09/2012

Assessors: Daniel Alexander

Campus:	Magill
Building:	C
Space ID:	MG-C-10
Description:	Plant Room
Location:	C1-80

UniSA deemed: **Non-Confined Space**

UniSA deems a space Confined Space if either assessment criteria (shown below) results in Yes.

Number of Entrances:	1
Entry type:	Door / Gate
Access type:	Easy access

Comments:	This is a restricted space
Additional Hazards:	Slips, trips and falls, Electrical

[View on plan](#)

[Return to Register](#)

Category	Criteria: Work Health and Safety Regulations 2012 (SA)	Result
A	Is the space enclosed or partially enclosed?	Yes
B	Is not designed or intended primarily to be occupied by a person?	No
C	Is, or is designed or intended to be, at normal atmospheric pressure while any person is in the space?	Yes
D	Is or is likely to be a risk to health and safety from:	
i)	an atmosphere that does not have a safe oxygen level?	No
ii)	contaminants, including airborne gases, vapours and dusts, that may cause injury from fire or explosion?	No
iii)	harmful concentrations of any airborne contaminants?	No
iv)	engulfment?	No
Confined Space	If the answer to A and B and C and at least one of D i), ii), iii) or iv) is Yes, then the space is a Confined Space.	No

Category	Criteria: AS2865-2009	Result
A	Is the space enclosed or partially enclosed?	Yes
B	Is not intended or designed primarily for human occupancy?	Yes
C	Has an oxygen concentration outside the safe oxygen range?	No
D	Has a concentration of airborne contaminant that may cause impairment, loss of consciousness or asphyxiation?	No
E	Has a concentration of flammable airborne contaminant that may cause injury from fire or explosion?	No
F	Has a risk of engulfment in a stored free flowing solid or a rising level of liquid that may cause suffocation or drowning?	No
Confined Space	If the answer to A and B and at least one of C, D, E or F is Yes, then the space is a Confined Space.	No



Date	Amendment details	Approved by



University of South Australia Confined Space Register 2012

Assessed by: AECOM Australia Pty Ltd

Date Assessed: 24/09/2012

Assessors: Daniel Alexander

Campus:	Magill
Building:	C
Space ID:	MG-C-11
Description:	Hoist
Location:	via C2-53

UniSA deemed: **Non-Confined Space**

UniSA deems a space Confined Space if either assessment criteria (shown below) results in Yes.

Number of Entrances:	1
Entry type:	Door / Gate
Access type:	Easy access

Comments:	This is a restricted space
Additional Hazards:	Head impact, Constrained movement

[View on plan](#)

[Return to Register](#)

Category	Criteria: Work Health and Safety Regulations 2012 (SA)	Result
A	Is the space enclosed or partially enclosed?	Yes
B	Is not designed or intended primarily to be occupied by a person?	No
C	Is, or is designed or intended to be, at normal atmospheric pressure while any person is in the space?	Yes
D	Is or is likely to be a risk to health and safety from:	
i)	an atmosphere that does not have a safe oxygen level?	No
ii)	contaminants, including airborne gases, vapours and dusts, that may cause injury from fire or explosion?	No
iii)	harmful concentrations of any airborne contaminants?	No
iv)	engulfment?	No
Confined Space	If the answer to A and B and C and at least one of D i), ii), iii) or iv) is Yes, then the space is a Confined Space.	No

Category	Criteria: AS2865-2009	Result
A	Is the space enclosed or partially enclosed?	Yes
B	Is not intended or designed primarily for human occupancy?	Yes
C	Has an oxygen concentration outside the safe oxygen range?	No
D	Has a concentration of airborne contaminant that may cause impairment, loss of consciousness or asphyxiation?	No
E	Has a concentration of flammable airborne contaminant that may cause injury from fire or explosion?	No
F	Has a risk of engulfment in a stored free flowing solid or a rising level of liquid that may cause suffocation or drowning?	No
Confined Space	If the answer to A and B and at least one of C, D, E or F is Yes, then the space is a Confined Space.	No



Date	Amendment details	Approved by