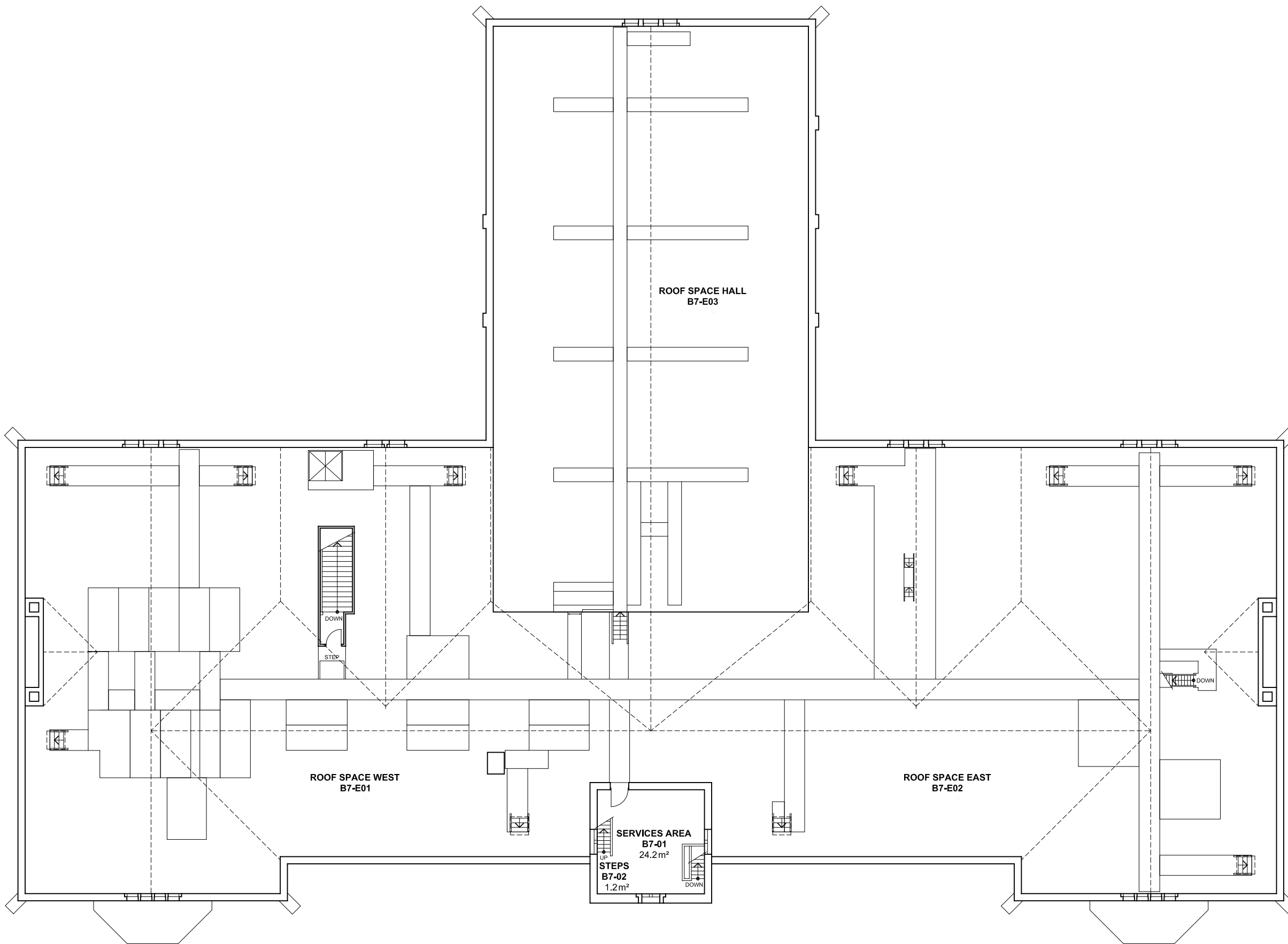


2 4 6 8 10m 20 40 60



NOTES:
 Building Records drawings remain the property of the University of South Australia and must be returned upon request. These drawings may be inaccurate, and are subject to change without notice. Any errors and/or omissions should be reported to the Facilities Management Unit.



UNIVERSITY OF SOUTH AUSTRALIA

FACILITIES MANAGEMENT UNIT

101 Currie Street,
 Adelaide, SA 5000
 Phone 8302 2762
 Fax 8302 2708

**BUILDING RECORDS
 CITY EAST CAMPUS**

Building
**BROOKMAN
 BUILDING B
 LEVEL 7**

Scale: Refer to scale bar
 Last Update: 15/06/2018
 Drawn: J Hvalica

Drawing No.: **A106PL07 - W**
 Revision: **D**