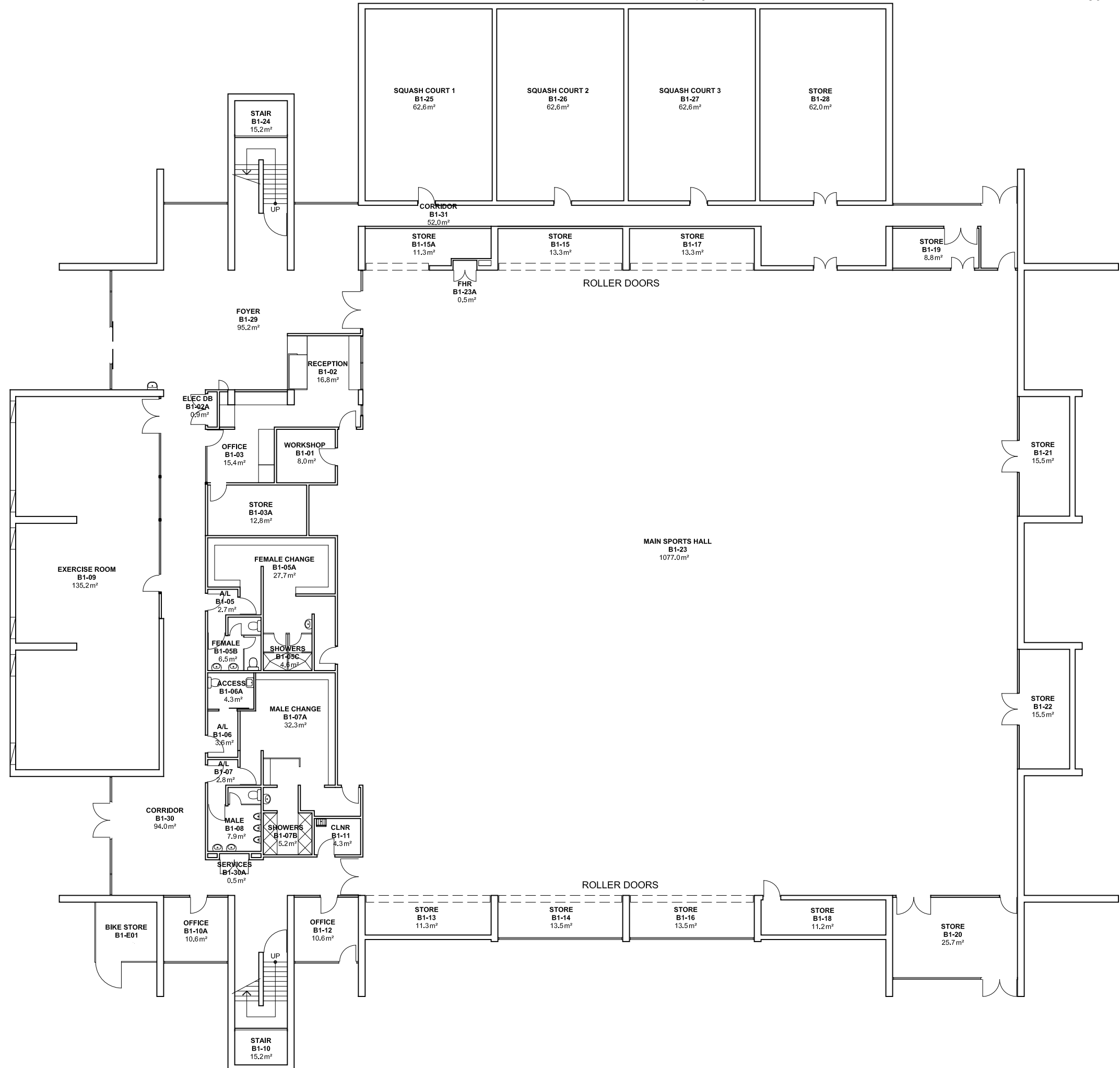


2 4 6 8 10m 20 40 60

**NOTES:**  
 Building Records drawings remain the property of the University of South Australia and must be returned upon request.  
 These drawings may be inaccurate, and are subject to change without notice. Any errors and/or omissions should be reported to the Facilities Management Unit.



UNIVERSITY OF  
SOUTH AUSTRALIA

FACILITIES  
MANAGEMENT  
UNIT  
101 Currie Street,  
Adelaide, SA 5000

BUILDING RECORDS  
MAWSON LAKES CAMPUS

Building  
EW MILLS SPORTS CENTRE  
BUILDING B  
LEVEL 1

Scale: Refer to scale bar  
 Drawn: J Hvalica  
 Last Update: 17/10/2023

Drawing No.: A502PL01 - W  
 Revision: Q

