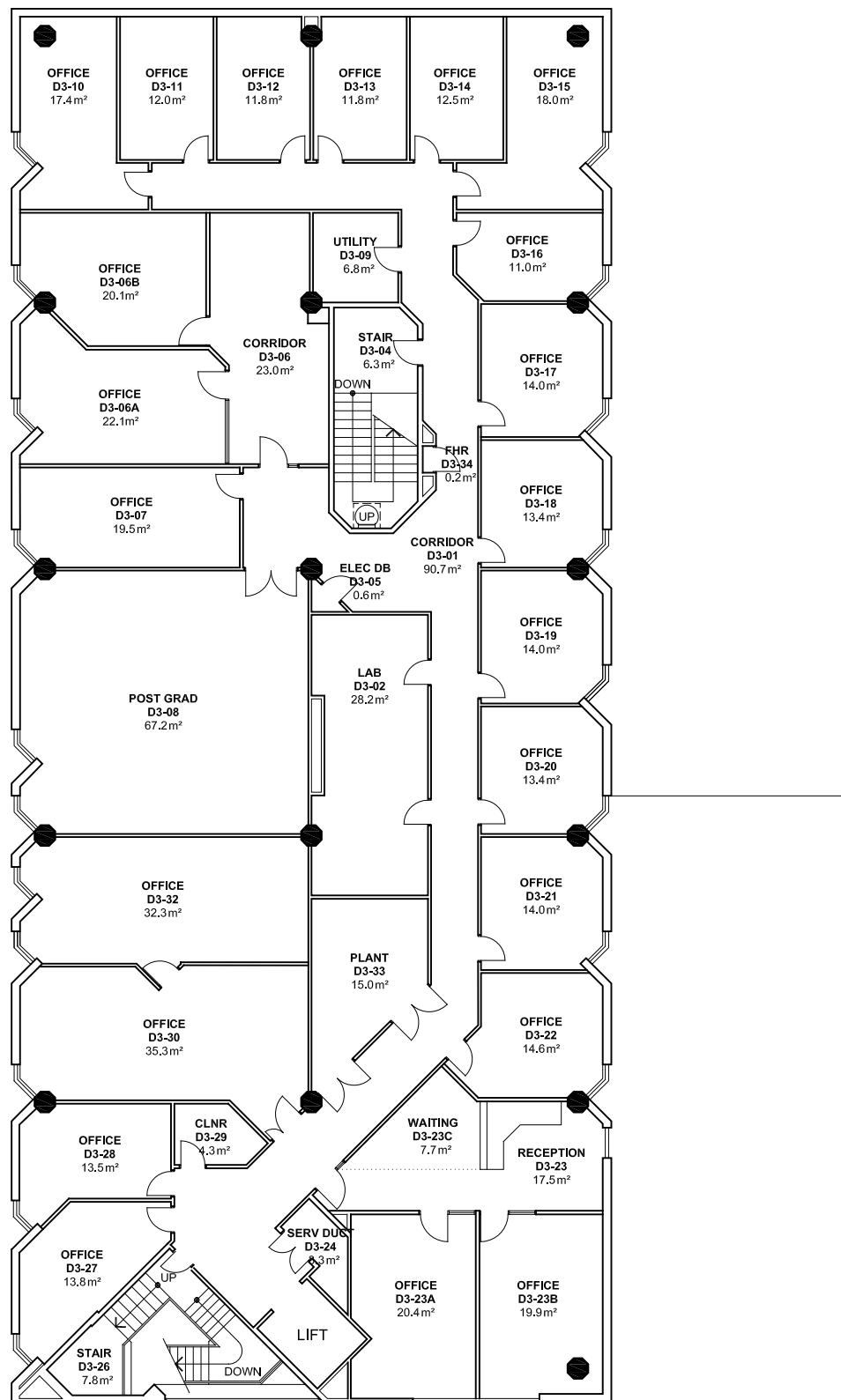


2 4 6 8 10m 20 40 60



NOTES:
 Building Records drawings remain the property of the University of South Australia and must be returned upon request.
 These drawings may be inaccurate, and are subject to change without notice. Any errors and/or omissions should be reported to the Facilities Management Unit.



UNIVERSITY OF
SOUTH AUSTRALIA

FACILITIES
MANAGEMENT
UNIT

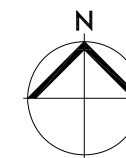
101 Currie Street,
Adelaide, SA 5000
Phone 8302 2762
Fax 8302 2708

BUILDING RECORDS
MAWSON LAKES CAMPUS

Building

BUILDING D
LEVEL 3

Scale: Refer to scale bar
 Drawn: J Hvalica
 Last Update: 20/08/2018



Drawing No.: A504PL03 - W
 Revision: N