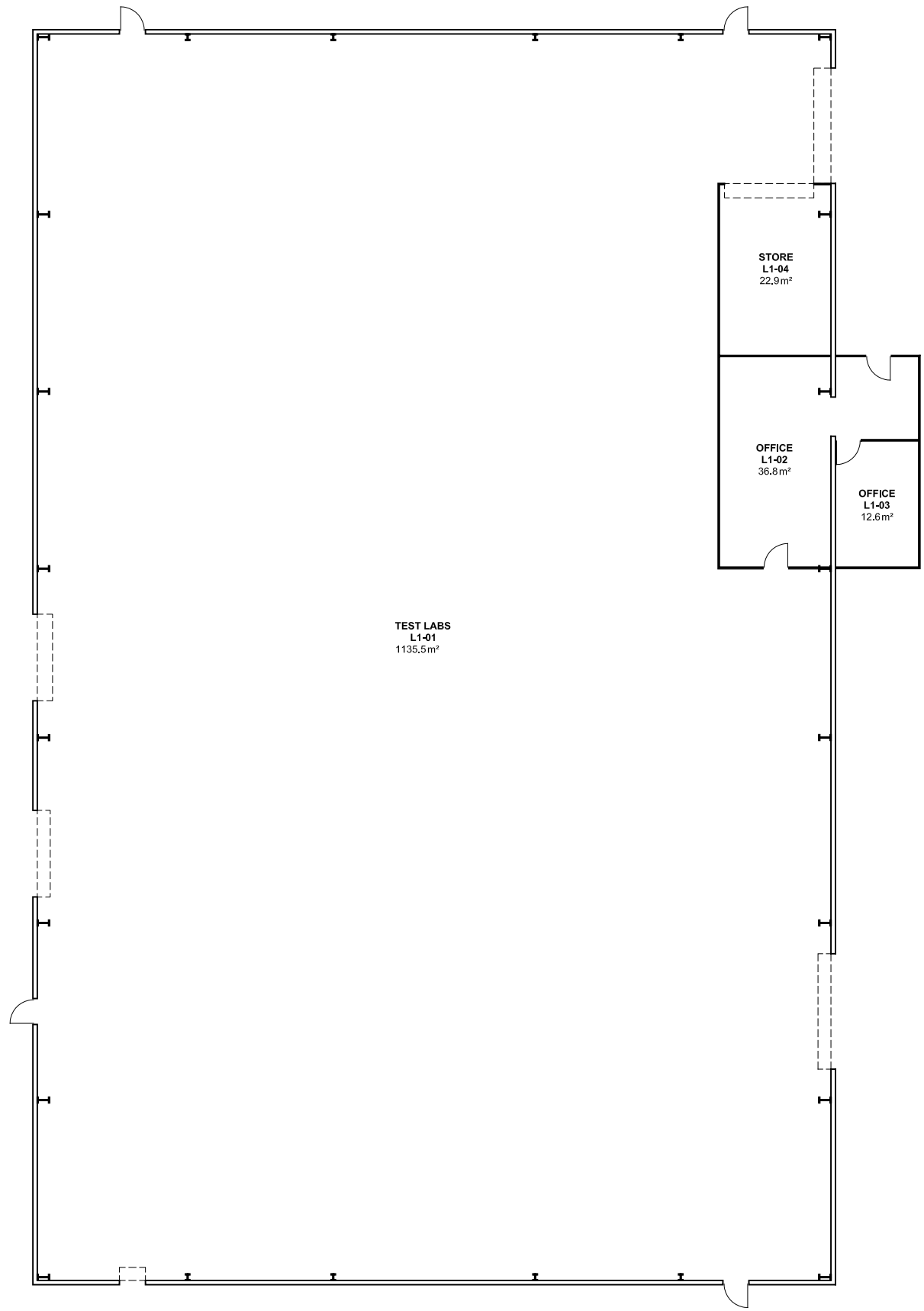


2 4 6 8 10m 20 40 60



NOTES:
 Building Records drawings remain the property of the University of South Australia and must be returned upon request.
 These drawings may be inaccurate, and are subject to change without notice. Any errors and/or omissions should be reported to the Facilities Management Unit.



UNIVERSITY OF SOUTH AUSTRALIA

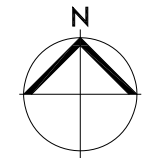
FACILITIES MANAGEMENT UNIT
 101 Currie Street, Adelaide. SA 5000

BUILDING RECORDS
 MAWSON LAKES CAMPUS

Building

**BUILDING L
 LEVEL 1**

Scale: Refer to scale bar	Drawn: J Hvalica
Last Update: 15/09/2022	



Drawing No.:	Revision:
A517PL01 - W	F