

SAHMRI
SA 728

BRADLEY BUILDING
HB 729

MONTEFIORE ROAD

NORTH TERRACE

HEALTH & MEDICAL CLINIC
HC 714

18 GRAY STREET
GS 7GS

LIVERPOOL STREET
L 711

WAY LEE
WL 703

Sir GEORGE KINGSTON
GK 706

DORRIT BLACK
DB 719

ELTON MAYO
EM 702

HAWKE
H 720

ROWLAND REES
RR 705

LAW BUILDING
LB 723

KAURNA
K 718

57 NORTH TERRACE
ER 733 **N 724**

YUNGONDI
Y 701

BARBARA HANRAHAN
BH 704

Sir HANS HEYSEN
HH 707

CATHERINE HELEN SPENCE
CS 708

BBQ INN
VB 7VB

HINDLEY STREET

JEFFREY SMART
JS 725

PRIDHAM HALL
PH 732

189 HINDLEY STREET
BE 715

9 LIGHT SQUARE
SQ 727

PHILIP STREET

DAVID PANK
DP 717

CURRIE STREET

189 CURRIE STREET

SHED 7A
7A

CHILD CARE CENTRE
CC 730

CURRIE STREET

LIGHT SQUARE
LS 731

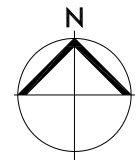
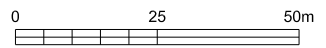
60 LIGHT SQUARE
LS 731

101 CURRIE STREET
AU 716

PLAYHOUSE LANE

Inset (not actual location)

City West Campus



Prepared by the Facilities Management Unit