

UniSAEDGE

PhD excellence with career relevance

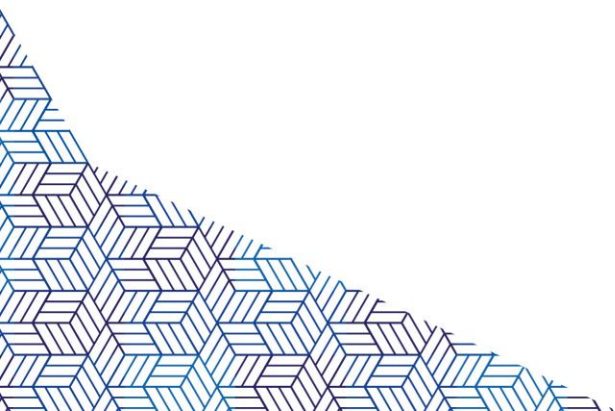


University of
South Australia

HDR Internships Lunch and Learn

Prof. Sandra Orgeig, Dean of Graduate Studies

22 June 2023



UniSAEDGE
PhD excellence with career relevance

Engaging with Industry

Low engagement

High engagement



Presentations

Industry
supervisor

National Industry PhD
Program

Reports

Internship

Industry/University
research project

Hackathon

UniSAEDGE

PhD excellence with career relevance



National Industry PhD Program



Enhance industry-
university collaboration



Increase innovation



Build future research
workforce

Key Elements:

- Co-designed PhD project with industry partner
- Co-supervised
- Industry training/ Skills development program incorporated
- Scholarship top-up for PhD candidates
- Application process

What is a research internship?

“A position with a research end-user where a student has undertaken research and development (R&D) related to their higher degree by research.

A research internship can be paid or unpaid, and can form part of an enrolment or be undertaken during an HDR period of suspension.”

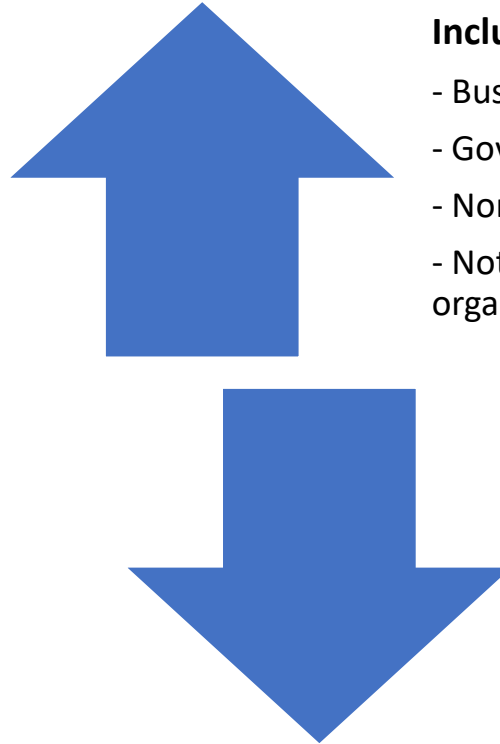
UniSAEDGE

PhD excellence with career relevance

Source: <https://www.dese.gov.au/research-block-grants/research-training-program/faqs-research-training-program-industry-internship-weighting>

What is a research end-user?

“An individual, community or organisation external to academia that will directly use or directly benefit from the output, outcome or results of the research”



Includes:

- Businesses
- Government organisations
- Non-government organisations
- Not-for-profits, community organisations & communities

Excludes:

- Other higher education providers
- Affiliates, controlled entities or subsidiaries of higher education providers

UniSAEDGE

PhD excellence with career relevance

Source: <https://www.tcsisupport.gov.au/glossary/glossaryterm/Research-end-user>

Internship Models



Part-time/full-time



Virtual



Continuous block/split



Industry partner location



Embedded/traditional



International/Australian

UniSAEDGE

PhD excellence with career relevance

Welcome our panel

Panel members:

Namrata Nath, PhD Candidate, STEM

Blake McIvor, PhD Candidate, STEM

Kimberley Gibson, PhD Candidate, CHS

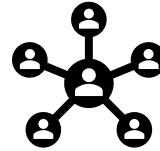
UniSAEDGE

PhD excellence with career relevance

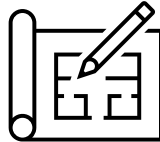
Why an internship?



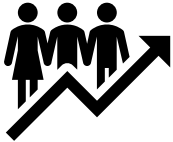
Real-world impact



Expand network



Inform research



Capability development



Future career opportunities

UniSAEDGE

PhD excellence with career relevance

What's required



Candidates:

- Completing internship tasks
- Working safely
- Raising issues
- Documentation
- IP & confidentiality



Industry:

- Appropriate internship tasks
- Safe environment
- induction, supervision
- Resources
- Raising issues
- Publications
- IP & confidentiality



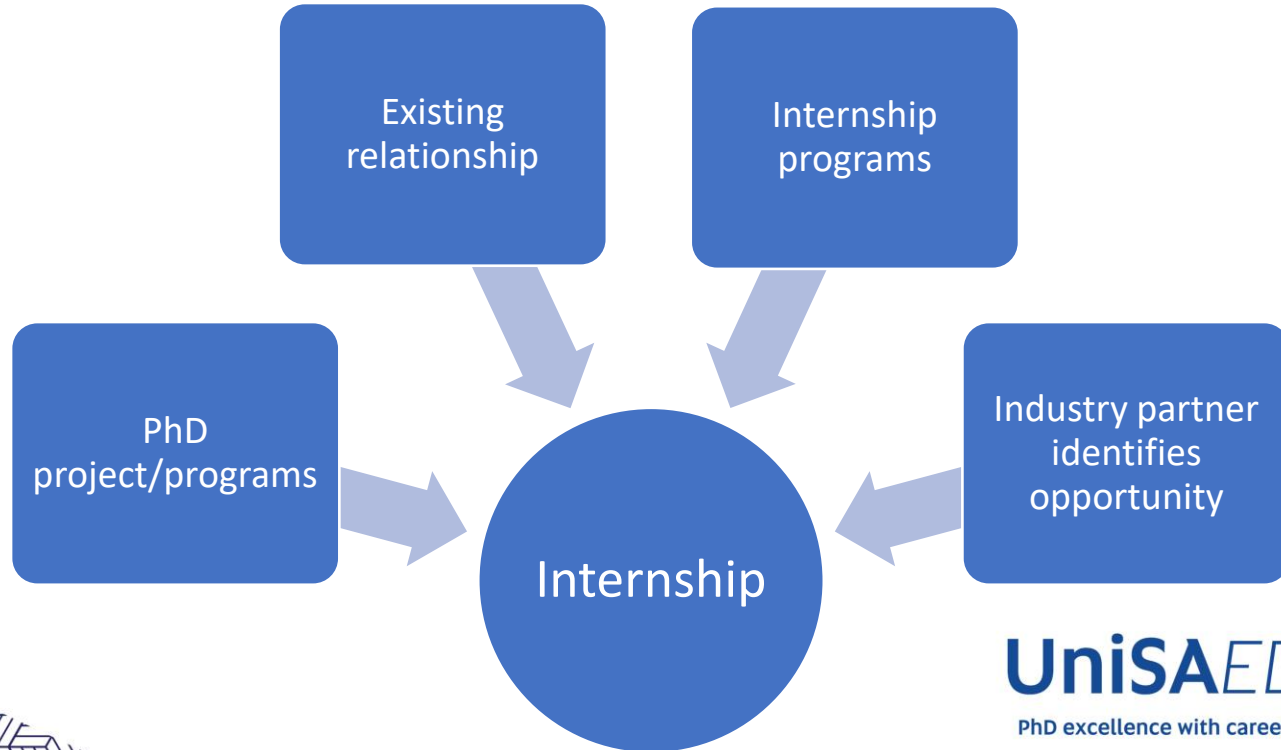
UniSA:

- Safety & other risks
- Supervision
- IP & confidentiality
- Prepare candidate for internship
- Reporting

UniSAEDGE

PhD excellence with career relevance

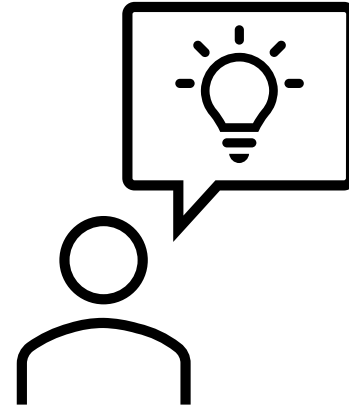
How to get started



Existing internships

Have you undertaken research or development with an industry partner that meets the Australian Government internship criteria?

- PhD candidate
- With a research end-user
- 60 days minimum full-time equivalent
- Written agreement in place within the first 18 months of candidature



Contact the Academic Services (Research) team in your Academic Unit

Further information



Supervisors



Research Student Internships webpage:

<https://i.unisa.edu.au/sas/work-integrated-learning/research-student-internships/>



Academic Services (Research) team for
your Academic Unit

UniSAEDGE

PhD excellence with career relevance